



SPECIFICATION SHEET

Model #:	_____ Qty: _____
Project #:	_____
Consultant:	_____

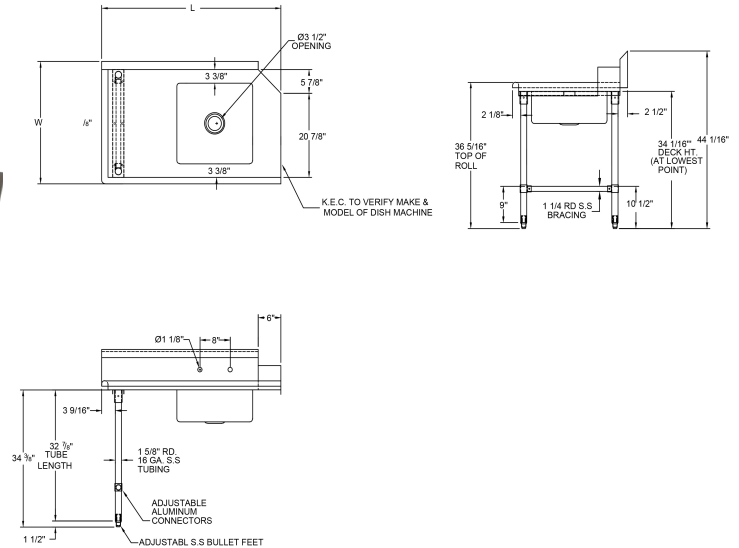
QUALITY FOOD SERVICE EQUIPMENT

PREMIUM SOILED DISHTABLES



DIMENSIONS

left to right operation



MATERIAL

- ◆ 16GA 300 stainless steel top
- ◆ Stainless steel legs
- ◆ Stainless steel bullet feet

FEATURES

- ◆ Straight design
- ◆ 10" backsplash with 2" return to wall
- ◆ 8" on center splash mount faucet holes
- ◆ Rolled front & side rims
- ◆ One deep pre-rinse sink on right side
- ◆ Adjustable bracing
- ◆ Adjustable bullet feet

Model#	Bowl Size LxWxH	Length	Width
SDT-26L-16	20"x20"x8"	26"	30-3/8"
SDT-36L-16	20"x20"x8"	36"	30-3/8"
SDT-48L-16	20"x20"x8"	48"	30-3/8"
SDT-60L-16	20"x20"x8"	60"	30-3/8"
SDT-72L-16	20"x20"x8"	72"	30-3/8"

(609) 642-8389 | sales@nbreqquipment.com | www.nbreqquipment.com