

# "PRTC-C-2" POT RACKS - CEILING MOUNT

*Fits 36"-72" Tables, Stainless Steel Construction w/Stainless Steel Hooks*

**FEATURES:**

- Type 300 Stainless Steel
- All Racks Provided With Type 300 Stainless Steel Hooks (See Table For Quantity Per Size)
- Welded Setup
- Standard Ceiling Mount
- Recommended Ceiling Height 10'
- NSF And CSA Certified

**SPECIFICATIONS:**

- Made Of 3/16"x2" Stainless Steel
- Uprights: 1-5/8" O.D. Round Tube, 16GA Type 300 Stainless Steel

**CERTIFICATIONS:**

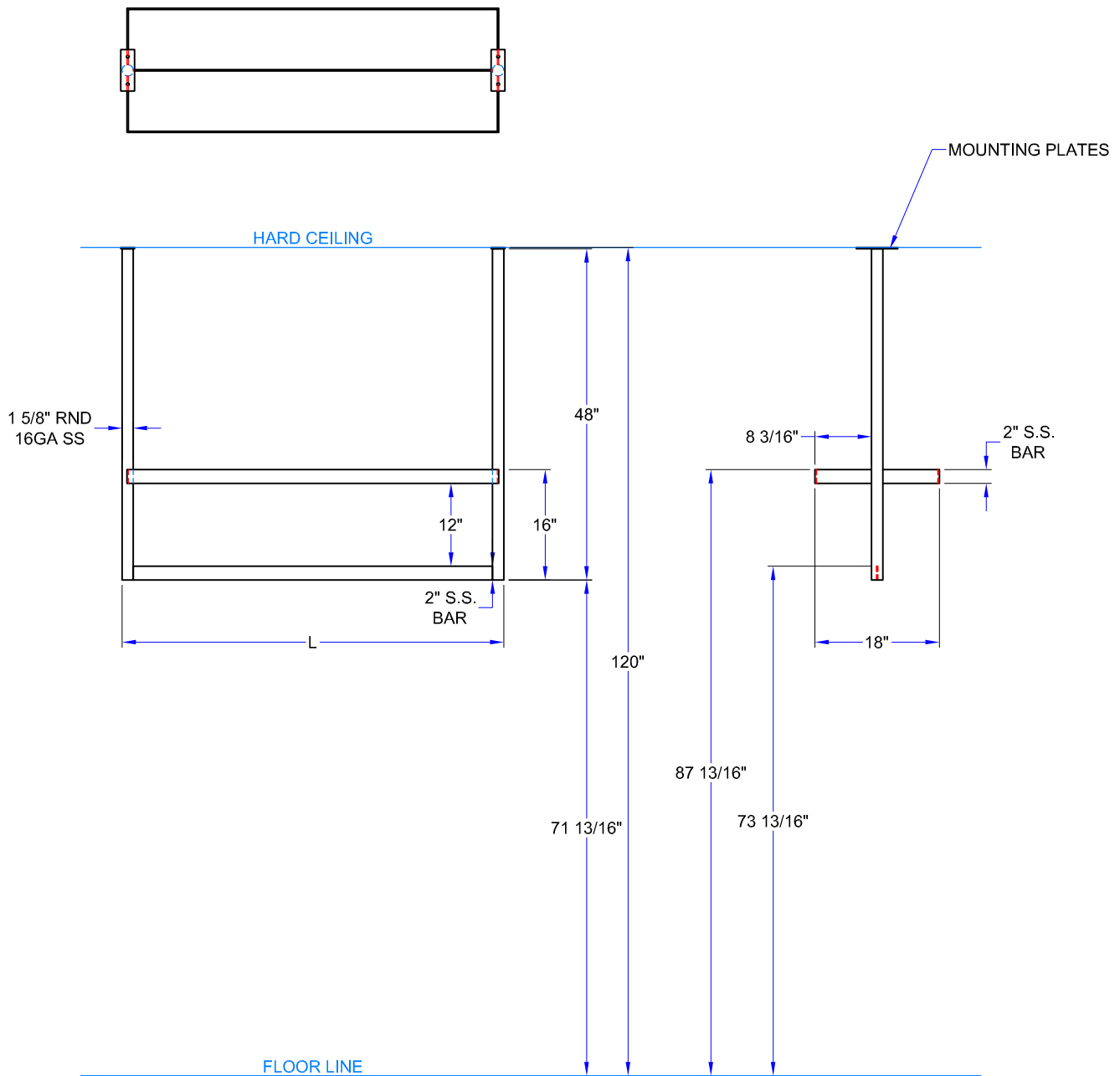


## "PRTC-C-2" POT RACK

MODEL	# OF UPRIGHTS	TABLE LENGTH	LENGTH	# OF HOOKS	WT. (LBS)
PRTC1A-C	2	36"	31-1/4"	9	24
PRTC1-C	2	48"	43-1/4"	12	28
PRTC2-C	2	60"	55-1/4"	15	33
PRTC3-C	2	72"	67-1/4"	18	40

ALL DIMENSIONS ARE TYPICAL. TOLERANCE +/- .500". JOHN BOOS & CO. RESERVES THE RIGHT TO CHANGE SPECIFICATIONS WITHOUT NOTICE.

# DETAILED SPECIFICATIONS



## "PRTC-C-2" POT RACK

MODEL	# OF UPRIGHTS	TABLE LENGTH	LENGTH	# OF HOOKS	WT. (LBS)
PRTC1A-C	2	36"	31-1/4"	9	24
PRTC1-C	2	48"	43-1/4"	12	28
PRTC2-C	2	60"	55-1/4"	15	33
PRTC3-C	2	72"	67-1/4"	18	40

ALL DIMENSIONS ARE TYPICAL. TOLERANCE +/- .500". JOHN BOOS & CO. RESERVES THE RIGHT TO CHANGE SPECIFICATIONS WITHOUT NOTICE.