

Back Bar Refrigeration

FBB Series



- FBB-36-N-HC FBB-59-N-HC FBB-69-N-HC FBB-79-N-HC FBB-95-N-HC
- FBB-36G-N-HC FBB-59G-N-HC FBB-69G-N-HC FBB-79G-N-HC FBB-95G-N-HC
- FBB-36S-N-HC FBB-59S-N-HC FBB-69S-N-HC FBB-79S-N-HC FBB-95S-N-HC
- FBB-36GS-N-HC FBB-59GS-N-HC FBB-69GS-N-HC FBB-79GS-N-HC FBB-95GS-N-HC

Item # _____

Standard Features

- Our "Next Generation" back bar units have been completely redesigned to be **fully front breathing**, able to handle those tight bar applications and extreme **100 °F environments**.
- Refrigeration system is a free flowing air system throughout the box to ensure "ICE COLD" products at all times with a side mount evaporator system.
- With innovative and eco-friendly technology, Fagor utilizes R-290 Hydrocarbon designed to meet DOE's Energy Conservation standards with very low contribution to global warming (ODP-0) (GWP-3).
- Heavy duty 18 gauge stainless steel top, durable **stainless steel inside walls** and coved corner floor. Reinforced bottom door frame to protect your long term investment.
- Units come standard with flat shelves on one door, balance with **adjustable bottle rails** for greater merchandising and inventory control.
- Greater usable capacity with the ability for 3 tall boys high and ability to take the beer the full depth of the box.
- **Field interchangeable doors** from Solid to Glass or Glass to Solid to adapt to ever changing needs.
- Units come with compressor mounted on the left side with service friendly slide out rail system.
- LED light underneath the mullion to protect itself from normal operations.



FBB-59-N-HC



FBB-79G-N-HC



FBB-95S-N-HC

Options & Accessories

- Low profile castors with reinforced rail
- Heavy duty castors with reinforced rail
- 6" adjustable stainless steel legs
- 220 volts / 50 cycles / 1 phase



*Conforms to UL & NSF-7 standards

	Model	Doors	Capacity		Kegs	Shelves	Amp	HP	Volt	NEMA Plug	Cabinet Dimensions			Shipping	
			12 Oz can	12 Oz Bottles							W	D	H	Wt.	Cubes
Back Bar	FBB-36(S)-N-HC	1	430	254	2	2	1.5	1/10	115	5-15P	36-3/4"	29"	36-7/8"	275	32
	FBB-59(S)-N-HC	2	852	486	3	4	3.0	1/3	115	5-15P	59-1/2"	29"	36-7/8"	307	51
	FBB-69(S)-N-HC	2	1014	594	3	4	3.0	1/3	115	5-15P	69-1/2"	29"	36-7/8"	332	59
	FBB-79(S)-N-HC	3	1092	702	4	6	3.0	1/3	115	5-15P	80"	29"	36-7/8"	396	68
	FBB-95(S)-N-HC	3	1302	864	5	6	3.0	1/3	115	5-15P	95-1/2"	29"	36-7/8"	429	81
	FBB-36G(S)-N-HC	1	430	254	2	2	1.5	1/10	115	5-15P	36-3/4"	29"	36-7/8"	275	32
	FBB-59G(S)-N-HC	2	852	486	3	4	3.0	1/3	115	5-15P	59-1/2"	29"	36-7/8"	307	51
	FBB-69G(S)-N-HC	2	1014	594	3	4	3.0	1/3	115	5-15P	69-1/2"	29"	36-7/8"	332	59
	FBB-79G(S)-N-HC	3	1092	702	4	6	3.0	1/3	115	5-15P	80"	29"	36-7/8"	396	68
	FBB-95G(S)-N-HC	3	1302	864	5	6	3.0	1/3	115	5-15P	95-1/2"	29"	36-7/8"	429	81

(S) Stainless steel units / (G) Glass door units.

JULY 2021

13105 NW 47th Ave. Opa-Locka FL 33054
 Tollfree: (866) 463 2467 Ph: (305) 779 0170 Fax: (305) 779 0173
 info@fagorcommercial.com
 www.fagorcommercial.com

TOGETHER WE EVOLVE

Back Bar Refrigeration

FBB Series



Specifications

Construction

Heavy duty stainless steel top, 18 gauge. Black vinyl front, sides and back. (S) Models have stainless steel front and sides. Galvanized back panel. Interior constructed of heavy duty stainless steel walls with coved corner NSF approved stainless steel floor. Door is comprised of heavy duty black vinyl steel. (S) Models are stainless steel. (G) Models are a dual pane glass with black frame, (GS) Models are a dual pane glass with aluminum frame. Provided with lock per door, magnetic door gaskets, removable without tools. Door openings have a plastic breaker strips to retard condensate formation. Units come complete with a 2" Ecomate CFC-Free polyurethane insulation, foamed in place.

Refrigeration System

Self-contained capillary tube system using environmentally friendly (CFC Free) R-290 refrigerant. Front breathing compressor on left side for built-in applications. Evaporator coil is mounted to interior left side above the compressor. Large fan motor and fan blades for greater air flow. Automatic condensate evaporator, no drain connection required. Evaporator condensate has been plumbed to a condensate pan located in the compressor housing. Access for the condensing unit behind the front grill, slides out for easy cleaning and maintenance. Cabinets are designed to maintain temperatures between 33 °F to 38 °F in the interior cabinet.

Lights

Interior LED light underneath the mullion.

Shelving

Two adjustable epoxy coated shelves provided per door standard. One door with standard flat shelves, balance will come with adjustable bottle rails.

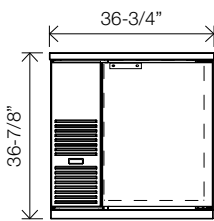
Others

Unit is supplied standard with an 8' cord and plug (Nema 5-15p).

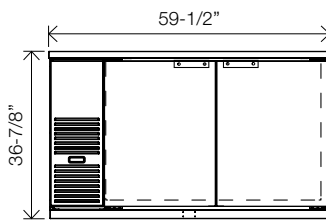
Warranty

3 year parts and labor warranty plus 2 additional year compressor warranty. (Continental U.S.A. & Canada only).

FBB-36(G)(S)-HC Front View



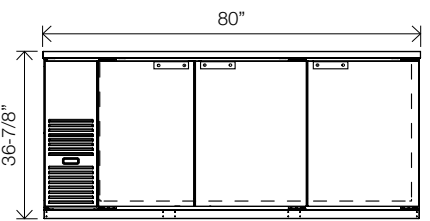
FBB-59(G)(S)-HC Front View



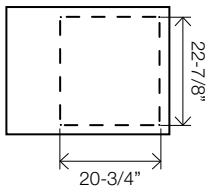
FBB-69(G)(S)-HC Front View



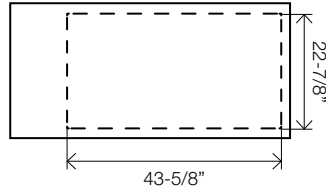
FBB-79(G)(S)-HC Front View



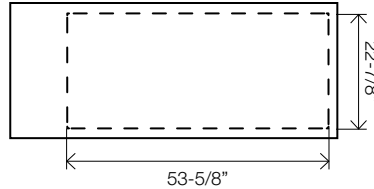
FBB-36(G)(S)-HC Top View



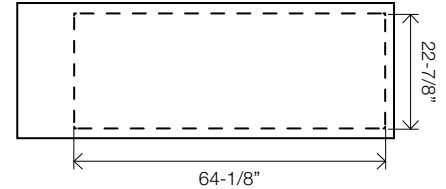
FBB-59(G)(S)-HC Top View



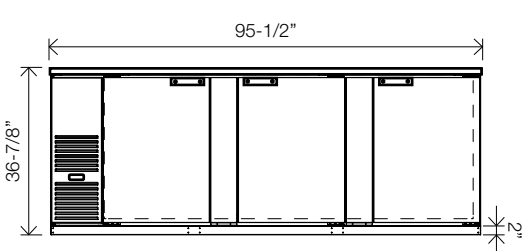
FBB-69(G)(S)-HC Top View



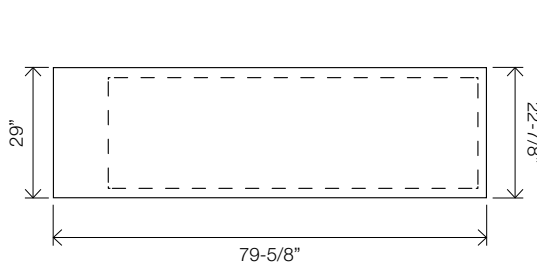
FBB-79(G)(S)-HC Top View



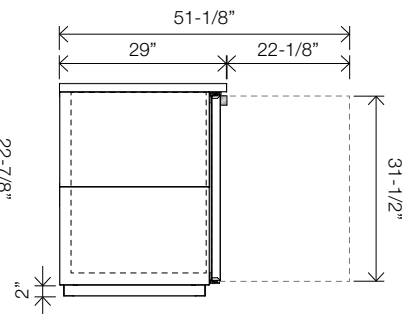
FBB-95(G)(S)-HC Front View



FBB-95(G)(S)-HC Top View



Common Side View



The manufacturer reserves the rights to modify materials and specifications without notice.