



# SPECIFICATION SHEET

Model #:	Qty:
Project #:	
Consultant:	

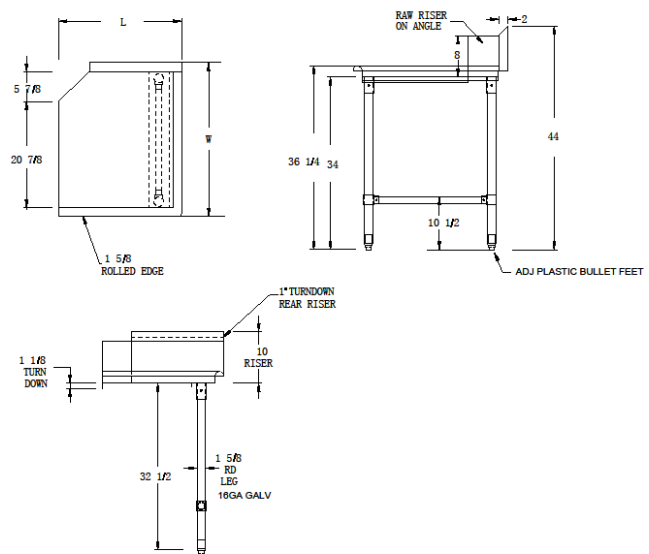
QUALITY FOOD SERVICE EQUIPMENT

## ECONOMY CLEAN DISHTABLES



## DIMENSIONS

right to left operation



## MATERIAL

- ◆ 18GA 300 stainless steel top
- ◆ Galvanized legs & gussets
- ◆ Plastic bullet feet

## FEATURES

- ◆ Straight design
- ◆ 10" backsplash with 2" return to wall
- ◆ 3/4" turned down rear lip
- ◆ Rolled front & side rims
- ◆ Adjustable bullet feet

Model#	Length	Width
CDT-26R	26"	30-3/8"
CDT-36R	36"	30-3/8"
CDT-48R	48"	30-3/8"
CDT-60R	60"	30-3/8"
CDT-72R	72"	30-3/8"