

GEM R4

Chocolate Showcase

STANDARD FEATURES

- LED lighting system
- Extra clear glass upper structure
- Sliding glass back doors
- Stainless steel lower interior foam tub
- Galvanized chassis structure
- All tempered glass
- Humidity control
- Cases ship standard unfinished

OPTIONS

- Gem G1: sliding glass back doors on the operating side. Lift up top glass on the customer side
- Remote condensing unit
- Casters
- RAL color/laminate front and side panels
- Available in matching Gelato case



PHOTO SHOWN MATCHING GELATO



GEM R4 CHOCOLATE					
TECHNICAL FEATURES		MODELS			
		GEM R4 C900	GEM R4 C1000	GEM R4 C1300	GEM R4 C1500
External Dimensions (L-D-H)	Inches	35 7/16" - 32 3/8" - 47 1/4"	39 3/8" - 32 3/8" - 47 1/4"	51 3/16" - 32 3/8" - 47 1/4"	59 1/16" - 32 3/8" - 47 1/4"
	Inches-MM	900 - 823 - 1200	1000 - 823 - 1200	1300 - 823 - 1200	1500 - 823 - 1200
Crated Dimensions (L-D-H)	Inches	41" - 39 3/8" - 53 1/8"	45" - 39 3/8" - 53 1/8"	59" - 39 3/8" - 53 1/8"	67" - 39 3/8" - 53 1/8"
	Inches-MM	1041 - 1000 - 1350	1150 - 1000 - 1350	1500 - 1000 - 1350	1700 - 1000 - 1350
Humidity Control	Type	35-70%	35-70%	35-70%	35-70%
Refrigeration	Type	Ventilated	Ventilated	Ventilated	Ventilated
Refrigeration Display Area	Type	Deck	Deck	Deck	Deck
Operating Temperature	°F	55°F	55°F	55°F	55°F
Compressor	Nr./Type	Hermetic	Hermetic	Hermetic	Hermetic
BTU'S @ +35°F Evap					
Temperature	BTU'S	1300 BTU'S	1600 BTU'S	1900 BTU'S	2300 BTU'S
Electric Supply	(V/Ph/Hz)	208-220/1/60	208-220/1/60	208-220/1/60	208-220/1/60
Power Consumption	(A)	8A	10A	12A	13A
Defrost	Mode/Type	Air	Air	Air	Air
Humidity Control	45-65%	Yes	Yes	Yes	Yes
Refrigerant Gas	Type	R404A	R404A	R404A	R404A
Net Weights	Kg/Lb	115Kgs / 253Lbs	122Kgs / 268Lbs	136Kgs / 200Lbs	160Kgs / 352Lbs
Crated Weights	Kg/Lb	130Kgs / 286Lbs	152Kgs / 334Lbs	166Kgs / 366Lbs	182Kgs / 400Lbs

* DIMENSIONS ARE WITHOUT SIDE PANELS

* Manufacturer reserves the right to change specifications without notice. Not responsible for error and omissions.



361-367 Beach Road, Burlingame, CA 94010
 Tel: 855.885.2400 | 650.342.2400 | Fax: 650.342.7400
 sales@oscartek.com | www.oscartek.com



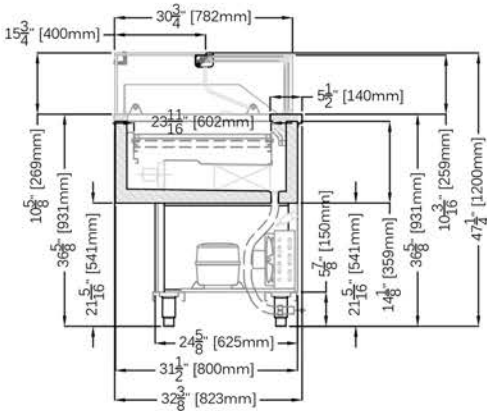
GEM R4 CHOCOLATE						
TECHNICAL FEATURES		MODELS				
		GEM R4 C1700	GEM R4 C2000	GEM R4 CA90SQ	GEM R4 CA90C	GEM R4 CA45
External Dimensions (L-D-H)	Inches	66 15/16" - 32 3/8" - 47 1/4"	78 3/4" - 32 3/8" - 47 1/4"	** 51 5/16" - 32 3/8" - 47 1/4"	** 80 3/4" - 32 3/8" - 47 1/4"	** 29 1/2" - 32 3/8" - 47 1/4"
Inches-MM	MM	1700 - 823 - 1200	2000 - 823 - 1200	1304 - 823 - 1200	2052 - 823 - 1200	750 - 823 - 1200
Crated Dimensions (L-D-H)	Inches	74 3/4" - 39 3/8" - 53 1/8"	84" - 39 3/8" - 53 1/8"	57" - 39 3/8" - 53 1/8"	86" - 39 3/8" - 53 1/8"	35" - 39 3/8" - 53 1/8"
Inches-MM	MM	1900 - 1000 - 1350	2150 - 1000 - 1350	1447 - 1000 - 1350	2184 - 1000 - 1350	889 - 1000 - 1350
Humidity Control	Type	35-70%	35-70%	35-70%	35-70%	35-70%
Refrigeration	Type	Ventilated	Ventilated	Ventilated	Ventilated	Ventilated
Refrigeration Display Area	Type	Deck	Deck	Deck	Deck	Deck
Operating Temperature	°F	55°F	55°F	55°F	55°F	40°F
Compressor	Nr./Type	Hermetic	Hermetic	Hermetic	Hermetic	Hermetic
BTU'S @ +35°F Evap Temperature	BTU'S	2400 BTU'S	2800 BTU'S	3600 BTU'S	3400 BTU'S	3800 BTU'S
Electric Supply	(V/Ph/Hz)	208-220/1/60	208-220/1/60	208-220/1/60	208-220/1/60	208-220/1/60
Power Consumption	(A)	14A	16A	13A	13A	13A
Defrost	Mode/Type	Air	Air	Air	Air	Air
Humidity Control	45-65%	Yes	Yes	Yes	Yes	Yes
Refrigerant Gas	Type	R404A	R404A	R404A	R404A	R404A
Net Weights	Kg/Lb	188Kgs / 414Lbs	203Kgs / 447Lbs	260Kgs / 572Lbs	260Kgs / 572Lbs	106Kgs / 234Lbs
Crated Weights	Kg/Lb	218Kgs / 480Lbs	236Kgs / 520Lbs	310Kgs / 674Lbs	310Kgs / 674Lbs	120Kgs / 264Lbs

* DIMENSIONS ARE WITHOUT SIDE PANELS

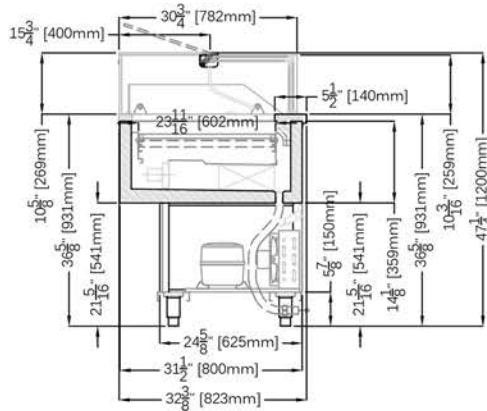
** SEE PLAN VIEW FOR ADDITIONAL EXTERIOR DIMENSIONS

GEM R4 - A: 32 3/8" DEPTH

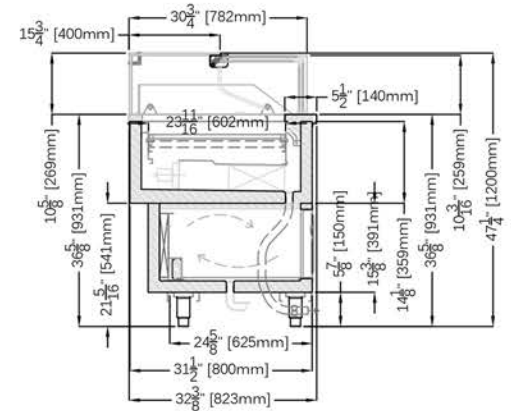
GEM R4



OPTIONAL: GEM G1 SLIDING & LIFT UP GLASS



OPTIONAL: COLD STORAGE

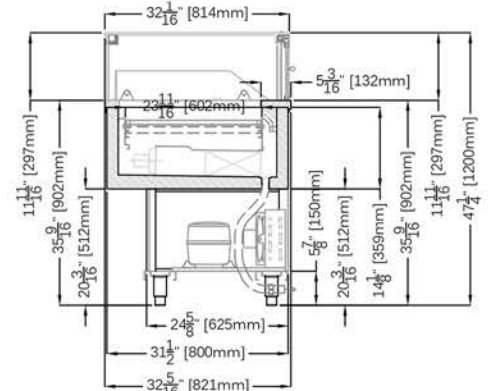


GEM R4 PHOTO SHOWN SLIDING GLASS (LEFT TO RIGHT) ON THE OPERATOR SIDE



GEM G1 PHOTO SHOWN WITH FRONT LIFT UP TOP GLASS

GEM R4 - A45



* Manufacturer reserves the right to change specifications without notice. Not responsible for error and omissions.



361-367 Beach Road, Burlingame, CA 94010
 Tel: 855.885.2400 | 650.342.2400 | Fax: 650.342.7400
 sales@oscartek.com | www.oscartek.com

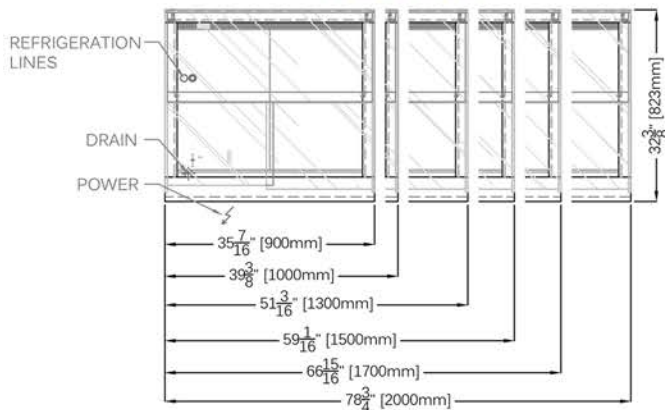


GEM R4

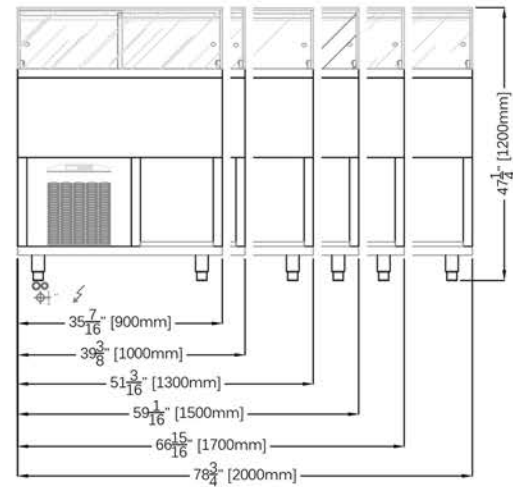
Chocolate Showcase

GEM R4 - A: 32 3/8" DEPTH

PLAN VIEWS



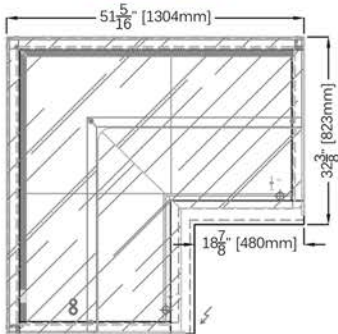
REAR ELEVATIONS (OPERATOR SIDE)



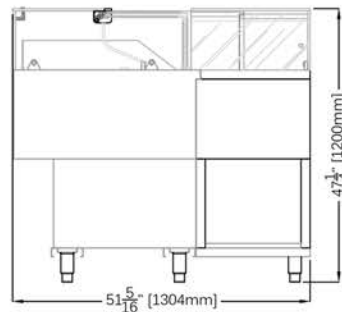
ELECTRICAL LEGEND	
	REFRIGERATED LINES
	DRAIN
	POWER

GEM R4 A90

GEM R4 A90SQ PLAN VIEW

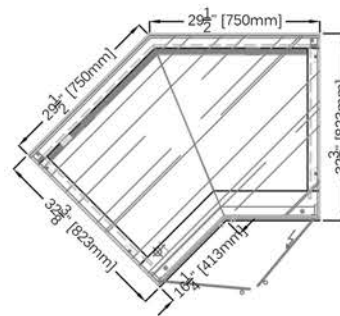


REAR ELEVATION (OPERATOR SIDE)

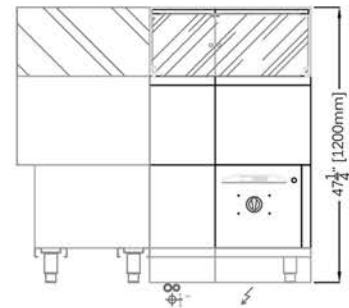


GEM R4 A45

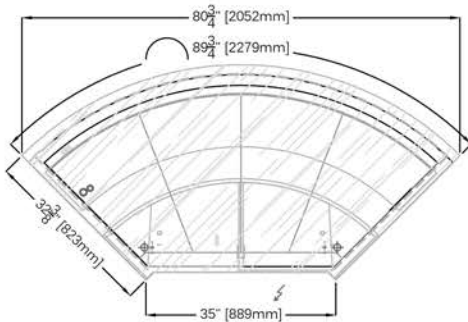
PLAN VIEW



REAR ELEVATION (OPERATOR SIDE)



GEM R4 A90C - PLAN VIEW



* Manufacturer reserves the right to change specifications without notice. Not responsible for error and omissions.



361-367 Beach Road, Burlingame, CA 94010
 Tel: 855.885.2400 | 650.342.2400 | Fax: 650.342.7400
 sales@oscartek.com | www.oscartek.com



