

# PIZZA PREPARATION TABLE

## Model: PA60N-D

Natural Refrigerant R-290 Model

### 60" Pizza Preparation Refrigerator with Drawers and Solid Doors

Heavy gauge #300 series stainless steel top, stainless steel front and end panels, aluminum interior.



## Options and Accessories

(upcharge and lead times may apply)

|  |   |
|--|---|
| Stainless steel interior                               | Vision panel lid                                  |
| Stainless steel back                                   | Door/drawer locks                                 |
| Overshelves (single or double)                         | Adjustable legs                                   |
| Condensing unit on left (standard on right)            | Front breathing                                   |
| Drawer in lieu of half door above the condensing unit* | Special electrical requirements (consult factory) |
| Wire rod garnish rack                                  |   |

\*Drawer section above condensing unit holds (1) 12 x 20 x 6 pan  
Consult factory for other model configurations, options and accessories.

Project Name:

Model Specified:

Location:

Item No:

Quantity:

AIA #:

SIS #:

## Standard Model Features

### REFRIGERATION SYSTEM

Performance rated refrigeration system

Natural, environmentally safe, high efficiency R-290 refrigerant<sup>1</sup>

Unique forced air design utilizes fans (approx. every 12") across the entire back of unit for even distribution of cold

Automatic, hot gas condensate evaporator

Non-corrosive, plasticized fin evaporator coil

Easily serviceable, slide out condensing unit

Expansion valve system

### CABINET ARCHITECTURE

2" non-CFC polyurethane foam insulation

Smooth, polished chrome door/drawer handles

Spring loaded, self closing door (above condensing unit)

Magnetic snap in Santoprene™ door/drawer gaskets

Stainless steel roll out drawers

19" deep, full length nylon cutting board

Insulated lids (with heavy duty hinge pins)

(7) pan top divider bars\*

5" casters

\* Pans supplied by others

### MODEL FEATURES

Reversing condenser fan<sup>2</sup>

Ergonomically-friendly raised angle rail

Electronic control, off-cycle defrost

Refrigerated section with door above the condensing unit

Field rehingeable door (above condensing unit)

<sup>1</sup> R-290 refrigerant meets all federal and state regulatory requirements.

<sup>2</sup> Fan runs in reverse for short period on startup to blow away any debris.

**NOTE:** Models come standard with a door above the condensing unit. A drawer above the condensing unit is an option.

**Continental**<sup>®</sup>  
Refrigerator



APPROVAL:

# Model Specifications

## DIMENSIONAL DATA

|  |               |
|--|---------------|
| Net Capacity (cubic feet)                                      | 19 (538 cu l) |
| Width, Overall (inches)  | 60 (1524 mm)  |
| Depth, Overall (inches)<br>(including cutting board & bumpers) | 38 ¾ (972 mm) |
| Height, Overall (inches)<br>(including 5" casters)             | 39 (989 mm)   |
| Depth, Cutting Board (inches)                                  | 19 (483 mm)   |
| Number of Drawers  | 4             |
| Number of Half Doors   | 1             |
| Interior Depth (inches)  | 30 (762 mm)   |
| Interior Height (inches)<br>(above condenser)                  | 12 ½ (318 mm) |

## PAN TOP

|  |              |
|--|--------------|
| Divider Bars (supplied with model)     | (7) CM1-0111 |
| Pan Capacity (pans supplied by others) | (8) 1/3      |

## REFRIGERANT DATA

|                             |      |
|-----------------------------|------|
| Condensing Unit Size (H.P.) | 1/3+ |
| Capacity (BTU per hour)*    | 3100 |

## ELECTRICAL DATA

|  |                     |
|--|---------------------|
| Voltage (International)                        | 115/60/1 (220/50/1) |
| Total Amps (International)                     | 7.4 (5.3)           |
| 10 ft. Cord/Plug [attached]<br>(International) | Yes<br>(No)         |

## SHIPPING DATA

|                          |                |
|--------------------------|----------------|
| Weight (pounds)          | 485 (220 kg)   |
| Height - Crated (inches) | 43 ¾ (1111 mm) |
| Width - Crated (inches)  | 62 (1575 mm)   |
| Depth - Crated (inches)  | 47 (1194 mm)   |

## DRAWER PAN CONFIGURATIONS

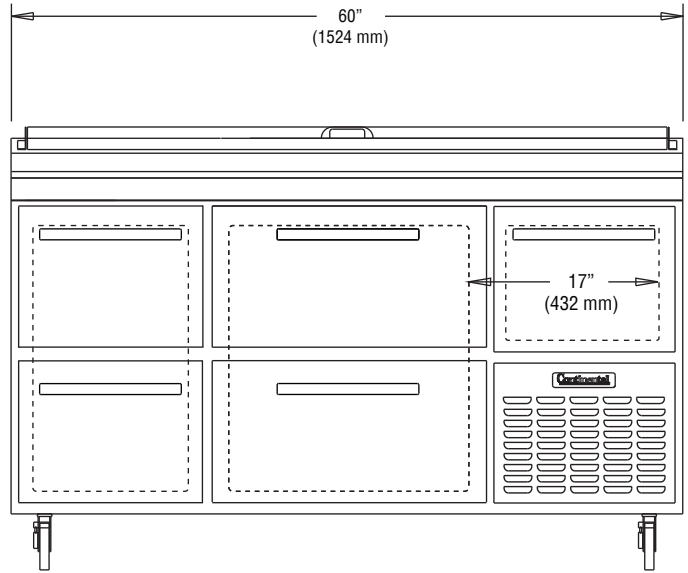
**Two Tier:** (larger section) (2) 12 x 20 x 6 pans per drawer  
**Narrow Section:** (1) 12 x 20 x 6 pan per drawer

\* Rating @ +25°F evaporator, 90°F ambient  
 Figures in parentheses reflect metric equivalents rounded to the nearest whole unit.

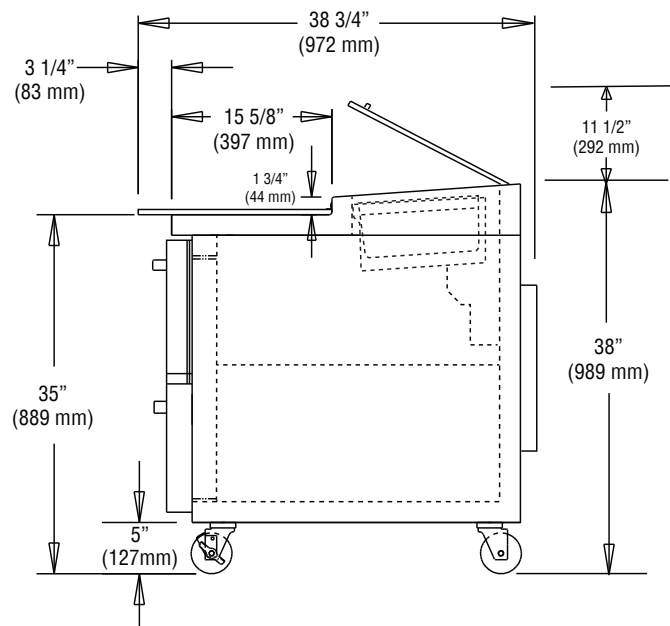


Equipped with one NEMA-5-15P Plug  
(varies by country)

# Model Plan Views



FRONT VIEW



SIDE VIEW

**IMPORTANT NOTE:** If the cabinet is located directly against a wall, a minimum clearance of 3" is required on sides, front and rear.

**Continental**  
Refrigerator

Toll-Free: 800-523-7138  
 Phone: 215-244-1400  
 Fax: 215-244-9579

539 Dunksferry Road  
 Bensalem, PA 19020  
[www.continentalrefrigerator.com](http://www.continentalrefrigerator.com)

Due to our continued efforts in developing innovative products, specifications subject to change without notice.



PROUDLY  
DESIGNED & ASSEMBLED  
IN THE U.S.A.

Intertek

© Copyright 2021. Continental Refrigerator.  
 A Division of National Refrigeration & Air Conditioning Products, Inc.

REVISED: 1/29/24