

## 32E Series - Endless Design Single Duty - Deli



Model No.	Description	Length	Depth	Height	Voltage	Amps	HP/BTUs	Power Cord	Est. Ship Weight
SC-CDS32E-4	Self Contained	50"	30.5"	49.6"	115	12.0	1/4	YES	470
SC-CDS32E-6	Self Contained	74"	30.5"	49.6"	115	12.0	1/3	YES	680
SC-CDS32E-8	Self Contained	98"	30.5"	49.6"	115	16.0	1/2	YES	910
R-CDS32E-4	Remote	50"	30.5"	49.6"	115	0.8	1400	NO	430
R-CDS32E-6	Remote	74"	30.5"	49.6"	115	1.6	2100	NO	630
R-CDS32E-8	Remote	98"	30.5"	49.6"	115	1.6	2800	NO	860
SC-CDS32E-4PT	Self Contained	50"	30.5"	49.6"	115	12.0	1/3	YES	470
SC-CDS32E-6PT	Self Contained	74"	30.5"	49.6"	115	12.0	1/3	YES	680
SC-CDS32E-8PT	Self Contained	98"	30.5"	49.6"	115	16.0	1/2	YES	910

MODEL NUMBER PREFIX - SC = Self Contained R = Remote  
 MODEL NUMBER SUFFIX - W = White B = Black S = Stainless Steel LED = LED lighting  
 • Cases are designed to operate at 75 degrees Fahrenheit and 55% relative humidity  
 • Cases are equipped with drains; check your local building codes for connection requirements.  
 • Specification subject to change without notice  
 IF COLORS ARE MIXED AN ADDITIONAL CHARGE WILL APPLY



## 32E Series - Endless Design Single Duty - Deli

### Standard Specifications and Optional Features

#### CONSTRUCTION

- UL Classified to ANSI/NSF 7
- Foamed in place CFC free foam
- Thermal insulated front glass - 28" H
- Heavy gauge steel super structure
- Single duty display
- Endless design allows for continuous line up
- Drain is included for cleaning

#### INTERIOR

- White, black, and stainless steel ends
- Stainless steel heavy gauge mezzanine shelf (2 rows)
- White aluminum floor-main deck shelves
- Air insulated baffle (prevents moisture from dripping into display area)

#### EXTERIOR

- Double pane rear removable doors
- Removable front grille allows for cleaning
- Removable rear grille for easy servicing
- 1" removable end panels
- 1" Front bumper

#### FINISHES

- White, black, and stainless steel front and ends
- Stainless steel mirror trim
- Stainless steel heavy gauge top - 20" W
- Rear of unit is stainless steel brush finish at top
- Bottom rear is designer white or glossy black

#### LIGHTING

- 2 rows of lighting at top of unit

#### ELECTRICAL REQUIREMENTS

- 115V with powercord
- UL/CUL listed
- 115V-5AMP general purpose receptacle

#### REFRIGERATION

- Copevap system (eliminates need for condensate pan)
- R134a expansion valve system
- Gravity coil located at inside top of unit
- Self contained unit
- Automatic defrost electronically controlled (self contained units only)
- Electronically maintains constant temperatures
- Remotes available

#### OPTIONS

- Stainless steel, laminate, or paint
- Mirrored doors
- Extra stainless steel mezzanine shelf
- 2" Front bumper
- Door locks
- Pass thru front doors
- Sandwich racks
- Salad pan settings

#### **Important Note:**

**All refrigerated cases are designed to operate in an environment of 75 degrees and 55% relative humidity. Product must be cooled before being displayed within the case.**

**DRAIN IS REQUIRED**

## 32E Series - Endless Design Single Duty - Deli

### Technical Data

Model No.	SC R	SC-CDS32E-4 R-CDS32E-4	SC-CDS32E-6 R-CDS32E-6	SC-CDS32E-8 R-CDS32E-8	SC-CDS32E-4PT R-CDS32E-4PT	SC-CDS32E-6PT R-CDS32E-6PT	SC-CDS32E-8PT R-CDS32E-8PT
Length with (2) ends		50"	74"	98"	50"	74"	98"
Length without ends		48"	72"	96"	48"	72"	96"
Height with ends		49.625"	49.625"	49.625"	49.625"	49.625"	49.625"
Height without ends		49"	49"	49"	49"	49"	49"
Depth with ends		30.5"	30.5"	30.5"	30.5"	30.5"	30.5"
Depth without ends		30"	30"	30"	30"	30"	30"
Endless design (Dimensions are +/- 1/4")		YES	YES	YES	YES	YES	YES
Operating temperature		36°F to 40°F	36°F to 40°F	36°F to 40°F	36°F to 40°F	36°F to 40°F	36°F to 40°F
Refrigerant (exp. valve)	SC	R134a	R134a	R134a	R134a	R134a	R134a
Refrigerant (exp. valve)	R	R407A	R407A	R407A	R407A	R407A	R407A
Compressor size HP	SC	1/4	1/3	1/2	1/3	1/3	1/2
Defrost per day (24 hours)	Air Defrost	2 per day	2 per day	2 per day	2 per day	2 per day	2 per day
BTU's at +20°F Evap. Temp.	R	1400	2100	2800	1400	2100	2800
Voltage	SC	115	115	115	115	115	115
Amperage	SC	12.0	12.0	16.0	12.0	12.0	16.0
Remote Voltage	R	115	115	115	115	115	115
Amperage, lights only	R	0.8	1.6	1.6	0.8	1.6	1.6
Cord and plug	SC R	YES NO	YES NO	YES NO	YES NO	YES NO	YES NO
Exterior color		W,B,S	W,B,S	W,B,S	W,B,S	W,B,S	W,B,S
Interior color		W,B,S	W,B,S	W,B,S	W,B,S	W,B,S	W,B,S
Floors		W,B,S	W,B,S	W,B,S	W,B,S	W,B,S	W,B,S
# of top doors		2	2	4	2	2	4
Door size		20.8" x 23.5"	31.3" x 23.5"	20.8" x 23.5"	20.8" x 23.5"	31.3" x 23.5"	20.8" x 23.5"
# of coils		1	1	1	1	1	1
Bottom storage		NO	NO	NO	NO	NO	NO
Front glass size		28" x 46.6875"	28" x 70.6875"	28" x 94.6875"			
# of main deck shelves		2	3	4	2	3	4
Main deck size		23.625" x 25"	23.625" x 25"	23.625" x 25"	23.625" x 25"	23.625" x 25"	23.625" x 25"
Cubic capacity		23	34.5	46	23	34.5	46
Mezzanine shelf, 2 rows		Standard	Standard	Standard	Standard	Standard	Standard
Shipping Info							
Height		55"	55"	55"	55"	55"	55"
Depth		44"	44"	44"	44"	44"	44"
Length		61"	87"	115"	61"	87"	115"
Gross weight SC/R		470/430	680/630	910/910	470/430	680/630	910/860
Cubic feet		85	122	161	85	122	161

(ALL WHITE OR ALL BLACK, NO EXTRA CHARGE—IF COLORS ARE MIXED AN ADDITIONAL CHARGE WILL APPLY)

#### Prefix

SC = Self Contained  
R = Remote

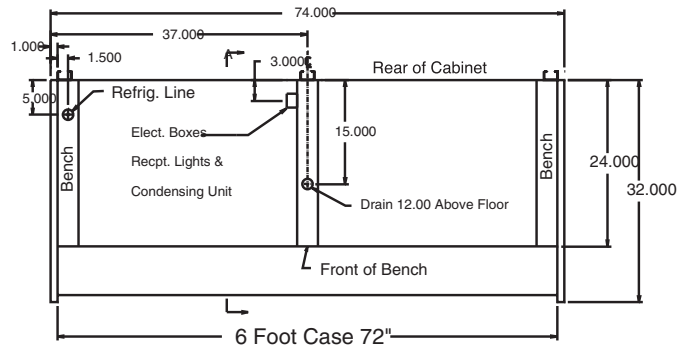
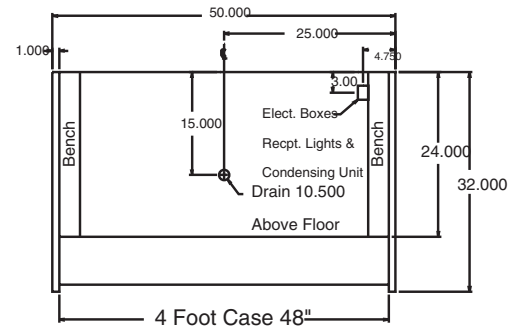
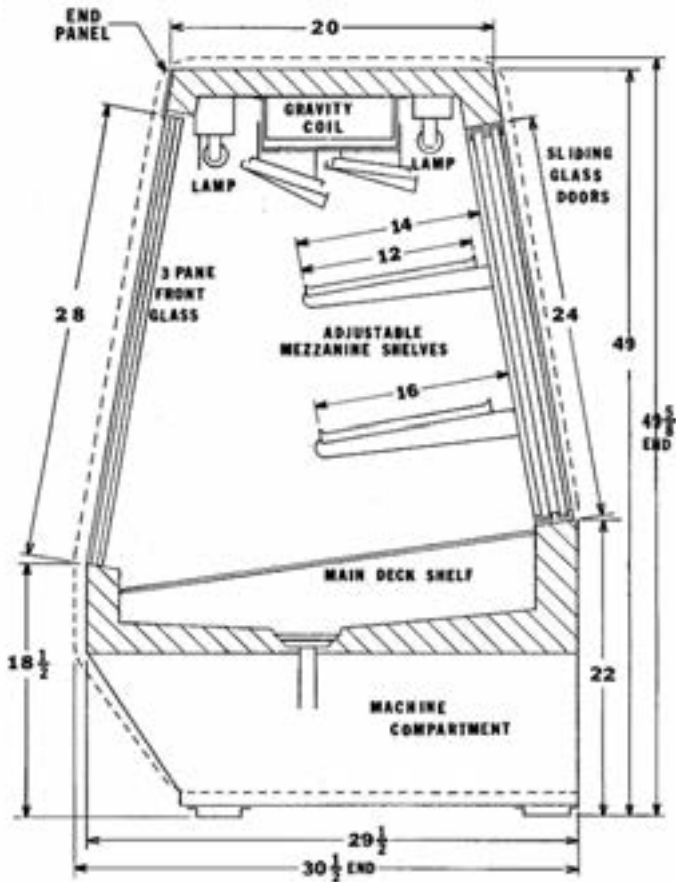
#### Suffix

B = Black  
W = White  
S = Stainless Steel  
LS = T8 lighting  
LED = LED lighting

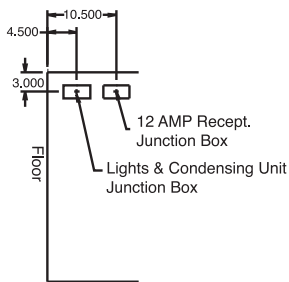
- Cases are designed to operate at 75 degrees Fahrenheit and 55% relative humidity
- Cases are equipped with drains; check your local building codes for connection requirements.
- Specification subject to change without notice

## 32E Series - Endless Design Single Duty - Deli

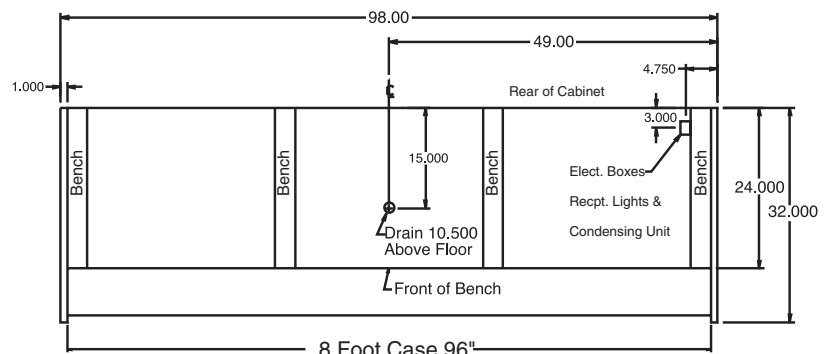
### Technical Data • Side View • Plan View



### Cross Section



### Side View



### Plan Views