

**RETAILERS GUIDE  
NO PRICING**

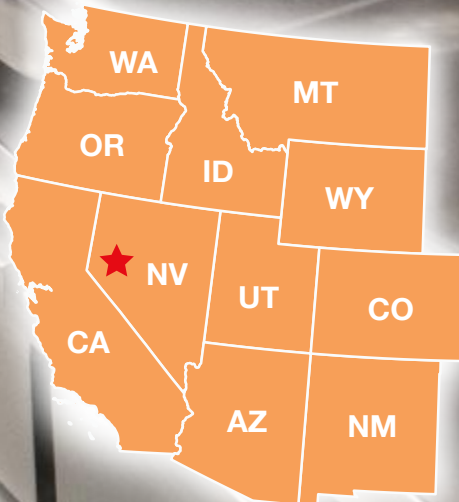


**John  
BOOS**

Since 1887

## **WESTERN REGION FOODSERVICE EQUIPMENT**

*Ships In 10 Working Days or Less  
No Modifications To Flyer Products  
Product Subject To Item Availability  
All Prices Dealer Net*



**\$3,500.00 Net Free Freight  
Program F.O.B. Nevada.  
Applicable For These  
States Only. See Page 31.**

**Email Purchase Orders To:  
[nevadapurchaseorders@johnboos.com](mailto:nevadapurchaseorders@johnboos.com)**

SMPPF-ST-0620-NV

## Dish Sorting Tables

- 16GA 300 Series Stainless Steel Top
- Available In Flat Top or 10" Rear Riser
- Available In Fixed Stainless Steel Shelf or Bracing
- 2-1/4" Raised Edge
- Standard 1/2" MPT Drain
- Includes 1/2" FPT Ball Valve
- Ships Welded Setup



Includes 1/2" FPT Ball Valve

### Flat Top With 2-1/4" Raised Edge Stainless Steel Legs & Fixed Undershelf

L x W	With Bullet Feet	With 5" Locking Casters
37" x 30"	DST6-3037SSW-X	DST6-3037SSW-C-X
49" x 30"	DST6-3049SSW-X	DST6-3049SSW-C-X
61" x 30"	DST6-3061SSW-X	DST6-3061SSW-C-X
73" x 30"	DST6-3073SSW-X	DST6-3073SSW-C-X
85" x 30"	DST6-3085SSW-X	DST6-3085SSW-C-X
97" x 30"	DST6-3097SSW-X	DST6-3097SSW-C-X



DST6-3049SSW-X

### Flat Top With 2-1/4" Raised Edge Stainless Steel Legs & Fixed Bracing

L x W	With Bullet Feet	With 5" Locking Casters
37" x 30"	DST6-3037SBW-X	DST6-3037SBW-C-X
49" x 30"	DST6-3049SBW-X	DST6-3049SBW-C-X
61" x 30"	DST6-3061SBW-X	DST6-3061SBW-C-X
73" x 30"	DST6-3073SBW-X	DST6-3073SBW-C-X
85" x 30"	DST6-3085SBW-X	DST6-3085SBW-C-X
97" x 30"	DST6-3097SBW-X	DST6-3097SBW-C-X



DST6-3049SBW-X-C

### 10" Rear Riser Top With 2-1/4" Raised Edge Stainless Steel Legs & Fixed Undershelf

L x W	With Bullet Feet
37" x 30"	DST6R10-3037SSW-X
49" x 30"	DST6R10-3049SSW-X
61" x 30"	DST6R10-3061SSW-X
73" x 30"	DST6R10-3073SSW-X
85" x 30"	DST6R10-3085SSW-X
97" x 30"	DST6R10-3097SSW-X

### 10" Rear Riser Top With 2-1/4" Raised Edge Stainless Steel Legs & Fixed Bracing

L x W	With Bullet Feet
37" x 30"	DST6R10-3037SBW-X
49" x 30"	DST6R10-3049SBW-X
61" x 30"	DST6R10-3061SBW-X
73" x 30"	DST6R10-3073SBW-X
85" x 30"	DST6R10-3085SBW-X
97" x 30"	DST6R10-3097SBW-X



DST6R10-3049SSW-X



DST6R10-3049SBW-X



## 3-Compartment Mobile Sink

- 16GA Type 300 Stainless Steel Top With #4 Polish, Satin Finish
- 18GA Stainless Steel Panels
- 18GA Stainless Steel Hinged Doors With Magnetic Catches
- Marine Edge On Front
- 16GA 6" Rear Risers And Side Splashes
- (3) Weld In Sink Bowls 10" X 14" X 5"
- Side Mount Hand Sink With Weld In Sink Bowl 10" X 14" X 5"
- (2) Heavy Duty 10" Swing Spout Deck Mount Faucets, 4" O.C.
- Heavy Duty 5" Locking Casters
- (2) Water Supply Options: 20 GAL Clean Tank Or Constant Supply City Water
- Fresh Water Pump
- 2-1/2 GAL Water Heater
- 20 GAL Clean Water Tank
- 30 GAL Waste Water Tank
- Soap And Towel Dispenser
- GFI With 6' Cord
- All Components Are UL Listed



Model #	Overall Size	Sink Size
MCS3-1014-HS-X	75" X 28" X 43-13/16"	10" X 14" X 5"

## Hygiene Station



- 18GA Stainless Steel Construction
- Type 300 stainless steel with #4 polish satin finish
- Includes wall mount hand sanitizer dispenser
- Three compartments to hold latex gloves, masks, or tissues
- Made in the USA
- *Note: Gloves & Masks Not Included.*



Model #	Dimensions (L x W x H)
DS-SD1-3-X	20-1/2" x 4-9/16 x 11-1/8"

## Hand Sanitizer Stand



- 16GA Type 300 Series Stainless Steel With #4 Polish Satin Finish
- Height Adjustable Support Arm Fits Up To 16" Tall Dispensers With Less Than 2" Diameter Collar
- 8" x 8" Base Fits Dispenser Bases Up To 7" In Diameter
- Base Plate Is Slotted For The Height Adjustable Support Arm Stability
- 16" x 16" Weighted Square Base For Added Stability With Leveling Feet
- Knockdown Design
- *Note: Dispenser Not Included*



Model #	Dimensions (L x W x H)	Maximum Overall Height
SDS-SB-2-X	16" x 16" x 24"	40"
SDS-SB-3-X	16" x 16" x 36"	52"



## Hand Sink With Towel Dispenser And Side Splashes



Model #	Bowl Size (L x W x D)	Description	Side Splash
PBHS-W-0909-TD-SSLR-X	9" X 9" X 5" (2" Drain)	Towel Dispenser Deck Mount - 4" On-Center	LH & RH

## Beverage Unit Cabinet



- 14GA Type 300 Stainless Steel Top with 5" High Rear Backsplash
- Stallion Edge Front, Straight Turndown on Sides
- 18GA Type 400 Stainless Steel Base
- Front Hinged Doors
- Stainless Steel Legs & Adjustable Feet
- 6" Diameter Trash Chute
- Accommodates 16 GAL Slim Jim Trash Can. Not Included. Clear dimensions 15" W x 25-3/4" H.
- Overall Height 40-3/4"

Model #	Trash Chute	L x W
4BU4R5-3648-L-X	Left Side	48" x 36"
4BU4R5-3648-R-X	Right Side	48" x 36"
4BU4R5-3660-L-X	Left Side	60" x 36"
4BU4R5-3660-R-X	Right Side	60" x 36"
4BU4R5-3672-L-X	Left Side	72" x 36"
4BU4R5-3672-R-X	Right Side	72" x 36"



4BU4R5-3672-R-X



SMPF-ST0620-NV

## Underbar Bar Drains

**NEW**

- 18GA Type 300 Stainless Steel With #4 Polish, Satin Finish
- 4" Front To Back Through
- 8" Front To Back Overall Depth
- 3/4" Deep Trough
- Removable Slotted Grate With Finger Holes
- Drainpipe 1" Long With 1/4" MPT Threads



UBDR-42-X

DRAINPIPE

## Bar Drains

Model #	Dimensions (L x W)
UBDR-12-X	12" X 8"
UBDR-18-X	18" X 8"
UBDR-24-X	24" X 8"
UBDR-30-X	30" X 8"
UBDR-36-X	36" X 8"
UBDR-42-X	42" X 8"
UBDR-48-X	48" X 8"



UBDR-45-IC-X



UBDR-45-OC-X



UBDR-90-IC-X



UBDR-90-OC-X

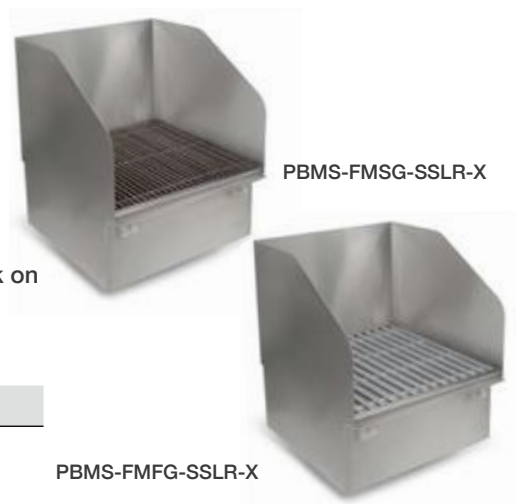
## Corner Fillers

Model #	Description
UBDR-90-IC-X	90° Inside Corner
UBDR-90-OC-X	90° Outside Corner
UBDR-45-IC-X	45° Inside Corner
UBDR-45-OC-X	45° Outside Corner

## Flush Mount Mop Sinks

**NEW**

- 14GA Type 300 Stainless Steel
- Flush Floor Mount Design For Roll-In Mop Bucket
- Standard Backsplash With Left Hand And Right Hand Splashes
- Accommodates A 4" O.D. Diameter Drain Pipe 3-1/4" Long
- Optional Stainless Steel or Fiberglass Subway-Style Grating
- Removable Stainless Steel Grate With 3/16" Stainless Steel Bar Stock on 3/4" Centers
- 5° Breaks In Bottom For Positive Drainage Towards Drain



PBMS-FMSG-SSLR-X

PBMS-FMFG-SSLR-X

Model #	Dimensions (L x W x D)	Grate Material
PBMS-FMSG-SSLR-X	21-7/8" X 23-7/8" X 30-1/4"	Stainless Steel
PBMS-FMFG-SSLR-X	21-7/8" X 23-7/8" X 30-1/4"	Fiberglass

## Mobile Bussing Table

- 16GA Type 300 Stainless Steel Top With Marine Edge
- Reinforced With 1" x 2" Channel Running Entire Length Of Table
- 1-1/2" Stallion Edge, Straight Turndown On Sides
- 16GA Slanted Sorting Shelf With Weep Hole
- Stainless Steel Base With Fixed Midshelf And Adjustable 18GA Undershelf
- Heavy Duty 5" Locking Casters
- Includes Scrap Hole
- Note: Does NOT Include Bussing Tubs or 16GAL Slim Jim Trash



SLANTED SORTING SHELF FOR GLASS RACKS

BT6-3063SSK

Model #	L x W
BT6-3063SSK-X	63" x 30"
BT6-3042SSK-X	42" x 30"



## Storage Cabinets



- 18GA Type 400 Series Stainless Steel With #4 Polish, Satin Finish
- (4) Adjustable Stainless Steel Shelves
- Two Swing Lockable Doors
- Sloped Top
- Adjustable Bullet Feet
- Mounting Holes In Back Panel To Securely Fasten To Wall

Model #	Dimensions (L x W x H)
TCH-223684-X	22" x 36" x 84"
TCH-224884-X	22" x 48" x 84"

## Deluxe Janitor Cabinet With Mop Sink

- 18GA Type 300 Stainless Steel With #4 Polish Satin Finish
- (2) SWING Double Panel Doors With Handles and Magnetic Latches
- Available In Left Side or Right Side Configuration
- MOP SINK Compartment Side Includes:
  - (1) Oversized Mop Sink 20" x 16" x 12" with 3-1/2" Drain
  - (1) Overhead Storage Shelf
  - (2) Side Mounted Mop/Broom Holder with Locking Cam
  - Panel-Less Back
- Storage Compartment Side Includes:
  - (3) STORAGE SHELVES
  - Bottom Storage Area
- Vented Side Panels
- Includes (1) Heavy Duty Service Faucet (PBF-SS-6-X)
- Includes (1) 10' Service Faucet Hose (PB-HOSE-120-X)



MOP/BROOM HOLDER WITH LOCKING CAM



MOP SINK 20" x 16" x 12"



**COMING SOON!**

New Improved Design With NSF Certification!  
Call for availability.

(Model #: PBJC-224884-L-X, PBJC-224884-R-X)



Model #	Dimensions (L x W x H)	Mop Sink Location
PBJC-4884-L-X	48" x 21-13/16" x 84"	LEFT
PBJC-4884-R-X	48" x 21-13/16" x 84"	RIGHT

## Janitor Cabinet With Mop Sink



PBJC-303084-X

- 18GA Type 300 Stainless Steel With #4 Polish, Satin Finish
- All Exposed Hardware Is Tamper Proof
- Includes Overhead Shelf For Chemical Storage
- Two Swing Lockable Louvered Doors
- Bottoms Of Bowls Formed For Drainage To 3-1/2" Diameter Die Stamped Opening
- Includes (1) Heavy Duty Service Faucet (PBF-SS-6-X)
- Includes (1) 10' Service Faucet Hose (PB-HOSE-120-X)
- Rear Mounted Mop Holder With Locking Cams
- Mounting Location Of Service Faucet Can Be Specified By Kitchen Equipment Contractor

Model #	Bowl (L x W x D)	Dimensions (L x W x H)
PBJC-252284-2D-X	20" x 16" x 12"	25" x 22" x 84"
PBJC-303084-X	24" x 24" x 12"	30" x 30" x 84"

**COMING SOON!**

New Improved Design With NSF Certification!  
Call for availability.

(Model #: PBJC-222584-X, PBJC303084-X)



SMRF-SF0620-NV

## Underbar Sinks

- 18GA 300 Series Stainless Steel
- 10" x 14" x 10" Deep Bowls With Corner Drains
- 4" O.C. Faucet Holes
- Bowls Are Fabricated, Not Deep Drawn
- Raised Ribbed Drain Boards
- Raised Marine Edge On Front And Sides
- Stainless Steel Legs & Bracing w/Adj Bullet Feet
- Includes Wall Mounting Clips
- \* **FLEXIBLE WATER LINE CONNECTORS RECOMMENDED WITH SHALLOW MOUNT FAUCETS (SOLD SEPARATELY)**



## Slim-Line Underbar Sinks - Splash Mount

- Includes Economy 4" Splash Mount Faucet w/10" Spout (PBF-W2-10LF-X) And Overflow Stand Pipes (PB-OVF-BS-X)

Model #	2 Compartment: Bowl Size (L x W x D)	Drain Board Size	L x W
EUB2S36SL-1LD-X/1RD-X	2 - 10" x 14" x 10" (LH or RH Drain Board)	(1) - 11"	36" x 18"
EUB2S48SL-1LD-X	2 - 10" x 14" x 10" (LH or RH Drain Board)	(1) - 22-1/4"	48" x 18"
EUB2S48SL-2D-X	2 - 10" x 14" x 10" (LH & RH Drain Board)	(2) - 11-1/2"	48" x 18"
Model #	3 Compartment: Bowl Size (L x W x D)	Drain Board Size	L x W
EUB3S40SL-X	3 - 10" x 14" x 10"	N/A	40" x 18"
EUB3S48SL-1LD-X/1RD-X	3 - 10" x 14" x 10" (LH or RH Drain Board)	(1) - 11-7/8"	48" x 18"
EUB3S60SL-1LD-X/1RD-X	3 - 10" x 14" x 10" (LH or RH Drain Board)	(1) - 23-7/8"	60" x 18"
EUB3S60SL-2D-X	3 - 10" x 14" x 10" (LH & RH Drain Board)	(2) - 11-3/4"	60" x 18"
EUB3S72SL-2D-X	3 - 10" x 14" x 10" (LH & RH Drain Board)	(2) - 17-1/4"	72" x 18"
EUB3S84SL-2D-X	3 - 10" x 14" x 10" (LH & RH Drain Board)	(2) - 23-1/4"	84" x 18"
EUB3S96SL-2D-X	3 - 10" x 14" x 10" (LH & RH Drain Board)	(2) - 29-1/4"	96" x 18"
Model #	4 Compartment: Bowl Size (L x W x D)	Drain Board Size	L x W
EUB4S72SL-2D-X	4 - 10" x 14" x 10" (LH & RH Drain Board)	(2) - 12"	72" x 18"
EUB4S84SL-2D-X	4 - 10" x 14" x 10" (LH & RH Drain Board)	(2) - 18"	84" x 18"
EUB4S96SL-2D-X	4 - 10" x 14" x 10" (LH & RH Drain Board)	(2) - 24"	96" x 18"

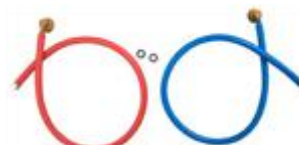
## Standard Underbar Sinks - Deck Mount

- Includes Economy 4" Deck Mount Faucet w/10" Spout (PBF-4-D-10LF-X) And Overflow Stand Pipes (PB-OVF-BS-X)

Model #	2 Compartment: Bowl Size (L x W x D)	Drain Board Size	L x W
EUB2S36-1LD-X/1RD-X	2 - 10" x 14" x 10" (LH or RH Drain Board)	(1) - 11"	36" x 21"
EUB2S48-1LD-X/1RD-X	2 - 10" x 14" x 10" (LH or RH Drain Board)	(1) - 22-1/4"	48" x 21"
EUB2S48-2D-X	2 - 10" x 14" x 10" (LH & RH Drain Board)	(2) - 11-1/2"	48" x 21"
Model #	3 Compartment: Bowl Size (L x W x D)	Drain Board Size	L x W
EUB3S40-X	3 - 10" x 14" x 10"	N/A	40" x 21"
EUB3S48-1LD-X/1RD-X	3 - 10" x 14" x 10" (LH or RH Drain Board)	(1) - 11-7/8"	48" x 21"
EUB3S60-1LD-X/1RD-X	3 - 10" x 14" x 10" (LH or RH Drain Board)	(1) - 23-7/8"	60" x 21"
EUB3S60-2D-X	3 - 10" x 14" x 10" (LH & RH Drain Board)	(2) - 11-3/4"	60" x 21"
EUB3S72-2D-X	3 - 10" x 14" x 10" (LH & RH Drain Board)	(2) - 17-1/4"	72" x 21"
EUB3S84-2D-X	3 - 10" x 14" x 10" (RH & LH Drain Board)	(2) - 23-1/4"	84" x 21"
EUB3S96-2D-X	3 - 10" x 14" x 10" (RH & LH Drain Board)	(2) - 29-1/4"	96" x 21"
Model #	4 Compartment: Bowl Size (L x W x D)	Drain Board Size	L x W
EUB4S72-2D-X	4 - 10" x 14" x 10" (LH & RH Drain Board)	(2) - 12"	72" x 21"
EUB4S84-2D-X	4 - 10" x 14" x 10" (RH & LH Drain Board)	(2) - 18"	84" x 21"
EUB4S96-2D-X	4 - 10" x 14" x 10" (RH & LH Drain Board)	(2) - 24"	96" x 21"

## Flexible Water Line Connectors - Shallow Mount Faucets

Model #	Description
PB-WL-36-X	(2) Hoses Per Kit, (1) Red, (1) Blue



## Underbar Chemical Storage Cabinet NSF

- 18GA 300 Series Stainless Steel
- 29-1/2" Working Height
- Stamped Ribbed LH Drain Board Sloped 1/2" Towards Sink
- 18GA Fabricated Sink Bowl (10" x 14" x 6")
- Raised Marine Edge
- Fixed Storage Shelves
- Stainless Steel Legs With Adjustable Feet
- 4" O.C. Deck Mount Faucet Holes (EUBCS-2421-X)
- 4" O.C. Splash Mount Faucet Holes (EUBCS-2418-X)
- \* **REQUIRES SHALLOW SPLASHMOUNT FAUCET (SOLD SEPARATELY)**
- \* **FLEXIBLE WATER LINE CONNECTORS RECOMMENDED WITH SHALLOW MOUNT FAUCETS (SOLD SEPARATELY)**



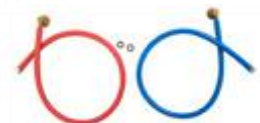
EUBCS-2421-X



PBF-4-D-10LF-X



PBF-4SM2-10LF-X



PB-WL-36-X

## Underbar Chemical Storage Cabinet - Deck Mount

Model #	L x W	Economy Deck Mount Faucets	Spout
EUBCS-2421-X	24" x 21"	PBF-4-D-10LF-X	10" Swing

## Slim Line Underbar Chemical Storage Cabinet - Splash Mount

Model #	L x W	Heavy Duty Shallow Mount Faucets	Spout
EUBCS-2418-X *	24" x 18"	PBF-4SM2-10LF-X	10" Swing

## Flexible Water Line Connectors - Shallow Mount Faucets

Model #	Description
PB-WL-36-X	(2) Hoses Per Kit, (1) Red, (1) Blue



## Glass Rack Dollies

- Aluminum Construction
- 3" Plate Casters
- Glass Racks Not Included

Model #	L x W
D2020-GT-X	21" x 21"

## Underbar Glass Rack Storage Cabinet NSF



EUBGRS-24-3-X

EUBGRS-24-2-X

- 18GA 300 Series Stainless Steel
- Length: 24" Width: 21"
- Ribbed Drainboard Top w/Drain
- EUBGRS-24-2-X: Supplied w/One Solid Fixed Mid-Shelf
- EUBGRS-24-3-X: Supplied w/Fixed Rack Storage Angles
- Stainless Steel Legs & Adj Feet
- Glass Racks Not Included

Model #	Description
EUBGRS-24-2-X	2 - Shelf
EUBGRS-24-3-X	3 - Shelf

## 4 Step Liquor Display NSF

- 18GA 300 Series Stainless Steel
- 4 Step Liquor Display
- Stainless Steel Legs & Bracing w/Adj Bullet Feet



EUBLD-1218-X

### Slim-Line 18" Width

Model #	L x W
EUBLD-1218-X	12" x 18"
EUBLD-1818-X	18" x 18"
EUBLD-2418-X	24" x 18"

### Standard 21" Width

Model #	L x W
EUBLD-1221-X	12" x 21"
EUBLD-1821-X	18" x 21"
EUBLD-2421-X	24" x 21"
EUBLD-3621-X	36" x 21"

## Underbar Point Of Service Cabinet



2" RUBBER GROMMET

EUBPOS-2425R-X

- 18GA 300 Series Stainless Steel
- 11" High Back Splash
- 2" Rubber Grommet In Top Back Center To Route Cables
- RH Hinged Door With Lock
- 14-1/4" Opening In Front Base To House CPU
- 2" Rubber Grommet In Center Back Panel To Route Cables
- Vented Door For Increased Air Circulation

Model #	L x W
EUBPOS-1825R-X	18" x 25"
EUBPOS-2425R-X	24" x 25"



SMPF-SF0620-NV

## Underbar Insulated Ice Bins w/ Cold Plate NSF

### Cold Plate

- Stainless Steel Circuits In Solid Aluminum Plate
- Available In 7-Circuit And 10-Circuit Cold Plate

### Underbar Ice Bin

- 18GA 300 Series Stainless Steel
- Insulated Ice Bin 12" Deep w/Drain
- Stainless Steel Legs & Bracing w/Adj Bullet Feet
- Ice Bin Lids Included

### Slim-Line Ice Bin: 7-Circuit Cold Plate

Model #	Description	L x W
EUBIB-2418CP7-X	7-Circuit Cold Plate	24" x 18"
EUBIB-3018CP7-X	7-Circuit Cold Plate	30" x 18"
EUBIB-3618CP7-X	7-Circuit Cold Plate	36" x 18"

### Slim-Line Ice Bin: 10-Circuit Cold Plate Premium Model

Model #	Description	L x W
EUBIB-3018CP10-X	10-Circuit Cold Plate	30" x 18"
EUBIB-3618CP10-X	10-Circuit Cold Plate	36" x 18"
EUBIB-4818CP10-X	10-Circuit Cold Plate	48" x 18"

### Standard Ice Bin: 7-Circuit Cold Plate

Model #	Description	L x W
EUBIB-2421CP7-X	7-Circuit Cold Plate	24" x 21"
EUBIB-3021CP7-X	7-Circuit Cold Plate	30" x 21"
EUBIB-3621CP7-X	7-Circuit Cold Plate	36" x 21"

### Standard Ice Bin: 10-Circuit Cold Plate Premium Model

Model #	Description	L x W
EUBIB-3021CP10-X	10-Circuit Cold Plate	30" x 21"
EUBIB-3621CP10-X	10-Circuit Cold Plate	36" x 21"
EUBIB-4821CP10-X	10-Circuit Cold Plate	48" x 21"

## Underbar Ice Bins NSF

- 18GA 300 Series Stainless Steel
- Insulated Ice Bin 12" Deep w/Drain
- Stainless Legs & Bracing w/Adj Bullet Feet
- 29-1/2" Working Height
- Ice Bin Lids Included

NOTE: Underbar Speed Rail Sold Separately

### Slim-Line Underbar Ice Bins

Model #	L x W
EUBIB-2418-X	24" x 18"
EUBIB-3018-X	30" x 18"
EUBIB-3618-X	36" x 18"
EUBIB-4818-X	48" x 18"

### Standard Underbar Ice Bins

Model #	L x W
EUBIB-12-2421-X	24" x 21"
EUBIB-12-3021-X	30" x 21"
EUBIB-12-3621-X	36" x 21"
EUBIB-12-4821-X	48" x 21"



## Bottle Well Holders

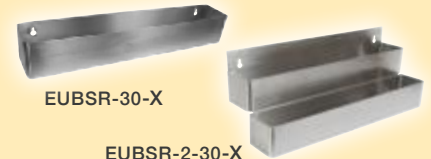
Fits standard 21" Ice Bins with and without Cold Plates. Available While Supplies Last



UB-BWH-X:

## Underbar Speed Rails

- 18 GA 300 Series Stainless Steel
- Single Speed Rail Dimension: 4" x 4"
- Available While Supplies Last



Length	Single
24"	EUBSR-24-X
30"	EUBSR-30-X
36"	EUBSR-36-X
48"	EUBSR-48-X

Length	Double
24"	EUBSR-2-24-X
30"	EUBSR-2-30-X
36"	EUBSR-2-36-X
48"	EUBSR-2-48-X





PB-DIIB2820CP10-X



PB-DIIB2818-X



## Underbar Insulated Drop-In Ice Bins

- 14GA Type 300 Stainless Steel Deck
- 18GA Type 300 Stainless Steel Base
- Includes Ice Bin Lid and Drain

### Drop-In Ice Bins With 10-Circuit Cold Plate NSF

Model #	Overall Size (L x W x H)
PB-DIIB2820CP10-X	20" x 28" x 14-3/8"
PB-DIIB3420CP10-X	20" x 34" x 14-3/8"

### Drop-In Ice Bins NSF

Model #	Overall Size (L x W x H)
PB-DIIB1218-X	18" x 12" x 14-3/8"
PB-DIIB2218-X	18" x 22" x 14-3/8"
PB-DIIB2818-X	18" x 28" x 14-3/8"
PB-DIIB3418-X	18" x 34" x 14-3/8"

## Dipper Well & Faucet



PB-DWBA-X



PBF-DWF-G-X

Model #	Description
PB-DWBA-X	(1) Bowl 5-1/2" x 5-1/2" (1) Basket 5" x 4-1/2"
PBF-DWF-G-X	Dipper Well Faucet, Deck Mount, Lead Free, Chrome Plated

## Drop-In Ice Bin With Water Station NSF

- 14GA Type 300 Stainless Steel Deck
- 18GA Type 300 Stainless Steel Base
- Includes Ice Bin Lid, Water Sink Grate, Removable Side Splash And Drains
- Optional With Or Without Glass Filler Faucet

Model #	Basin Size (L x W x D)	Overall Size (L x W x H)	Faucet
PB-DIIBWS1821-P-X	13" x 9" x 11"	18" x 21" x 13"	INCLUDES FAUCET PBF-SGF-LF-X
PB-DIIBWS1821-X	13" x 9" x 11"	18" x 21" x 13"	N/A
PB-DIIBWS2118-P-X	9" x 13" x 11"	21" x 18" X 13"	INCLUDES FAUCET PBF-SGF-LF-X
PB-DIIBWS2118-X	9" x 13" x 11"	21" x 18" X 13"	N/A



Adjustable Manifold Housing



Does Not Include Soda Gun

## Underbar Soda Gun Chase Filler NSF

- 18GA Type 300 Stainless Steel
- Mounts To Adjacent Underbar Equipment
- Slotted Key Holes On Back For Additional Mounting Options
- Removable Cover

Model #	Overall Size (L x D x H)
EUBSMH-0418-X	4" x 18-1/4" x 19-5/8"



EUBDWC-1225-X



EUBDWC-1525-X



EUBDWC-1825-X

## Trash Receptacle Chute NSF

- 16GA 300 Series Stainless Steel
- Removable Trash Chute
- Stainless Steel Legs & Bracing w/Adj Bullet Feet
- Accomodates Rubbermaid 16 GAL Slim Jim Trash Can (11" W x 22" W x 25" H) Not Included.

Model #	L x W
EUBDWC-1225-X	12" x 25"
EUBDWC-1525-X	15" x 25"
EUBDWC-1825-X	18" x 25"



Includes Removable Side Splash



PB-DIIBWS2118-P-X



PB-DIIBWS1821-P-X

SMRF-ST0620-NV

## Underbar Side Splash Kit

- 18GA Type 300 Stainless Steel
- Side Splash Each Sold Separately
- Kits can be purchased uninstalled or pre-installed at the factory. Must specify underbar equipment for factory installation.



### Side Splash Kit - Includes Hardware Installation

Model #	Description	L x H
EUBSS-12L-X/12R-X	LH or RH - (3) Screws	12" x 5"
EUBSS-18L-X/18R-X	LH or RH - (4) Screws	18" x 5"
EUBSS-21L-X/21R-X	LH or RH - (4) Screws	21" x 5"

### Side Splash Kit - Pre-installed At Factory

Model #	Description	L x H
EUBSS-12L-I-X/12R-I-X	LH or RH - (3) Screws	12" x 5"
EUBSS-18L-I-X/18R-I-X	LH or RH - (4) Screws	18" x 5"
EUBSS-21L-I-X/21R-I-X	LH or RH - (4) Screws	21" x 5"

## Underbar Corner Drain Board NSF

- 18GA 300 Series Stainless Steel
- Stainless Steel Legs & Bracing w/Adj Bullet Feet
- Stamped Ribbed Drain Boards
- 29-1/2" Working Height
- Corner Drain Board



### Standard Underbar Corner Drain Boards

Model #	L x W
EUBD-2121-C-X	21" x 21"

## Underbar Drain Boards NSF

- 18GA 300 Series Stainless Steel
- Stainless Steel Legs & Bracing w/Adj Bullet Feet
- Stamped Ribbed Drain Boards
- 29-1/2" Working Height

### Slim-Line Underbar Drain Boards

Model #	L x W
EUBD-1218-X	12" x 18"
EUBD-1818-X	18" x 18"
EUBD-2418-X	24" x 18"
EUBD-3018-X	30" x 18"
EUBD-3618-X	36" x 18"
EUBD-4818-X	48" x 18"

### Standard Underbar Drain Boards

Model #	L x W
EUBD-1221-X	12" x 21"
EUBD-1821-X	18" x 21"
EUBD-2421-X	24" x 21"
EUBD-3021-X	30" x 21"
EUBD-3621-X	36" x 21"
EUBD-4821-X	48" x 21"



## Underbar Blender Station

- 18GA 300 Series Stainless Steel
- Stainless Steel Legs & Bracing w/Adj Bullet Feet
- 29-1/2" Working Height
- 4" O.C. Faucet Holes
- \* **REQUIRES SHALLOW SPLASHMOUNT FAUCET (SOLD SEPARATELY)**
- \* **FLEXIBLE WATER LINE CONNECTORS RECOMMENDED WITH SHALLOW MOUNT FAUCETS (SOLD SEPARATELY)**



EUBBS-0909-X



EUBBS-1410-SL-X



EUBBS-1410-X



PB-WL-36-X



PBF-W2-6LF-X



PBF-4SM2-6LF-X

### Slim-Line 18" Width

Model #	FAB Sink Bowl	L x W	Width
EUBBS-1410-SL-X *	10" x 14" x 6"	24"	18"

### Standard 21" Width

Model #	FAB Sink Bowl	L x W	Width
EUBBS-0909-X * <span style="border: 1px solid blue; border-radius: 50%; padding: 2px;">NSF</span>	9" x 9" x 6"	12"	21"
EUBBS-1410-X * <span style="border: 1px solid blue; border-radius: 50%; padding: 2px;">NSF</span>	14" x 10" x 6"	18"	21"

### Flexible Water Line Connectors - Shallow Mount Faucets

Model #	Description
PB-WL-36-X	(2) Hoses Per Kit, (1) Red, (1) Blue

### Economy Shallow Mount Faucets

Model #	On-Center	Spout
PBF-W2-6LF-X	4"	6" Swing

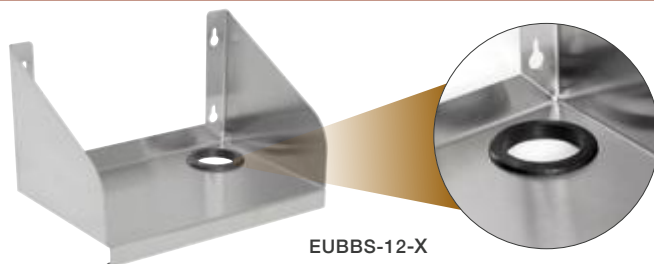
### Heavy Duty Shallow Mount Faucets

Model #	On-Center	Spout
PBF-4SM2-6LF-X	4"	6" Swing

## Underbar Bolt-On Blender Shelf NSF

- 18GA 300 Series Stainless Steel
- Bolt-On
- Electric Cord Cut-Out With Rubber Grommet

Model #	L x W
EUBBS-12-X	12" x 8"
EUBBS-18-X	18" x 8"



EUBBS-12-X

## Underbar Dump Sink NSF

- 18GA 300 Series Stainless Steel
- FAB Sink Bowl: 14" x 10" x 6"
- Stainless Steel Legs & Bracing w/Adj Bullet Feet
- 29-1/2" Working Height
- 4" O.C. Faucet Holes
- \* **REQUIRES SHALLOW SPLASHMOUNT FAUCET**



EUBDS-1014-SL-X

EUBDS-1218-X

EUBDS-1014-X

### Slim-Line 18" Width

Model #	L x W	Economy Shallow Mount Faucets		Heavy Duty Shallow Mount Faucets	
		Faucets	Spout	Faucets	Spout
EUBDS-1014-SL-X*	14" x 18"	PBF-W2-6LF-X	6" Swing	PBF-4SM2-6LF-X	6" Swing
EUBDS-1218-X *	12" x 18"	-	-	PBF-4SM2-10LF-X	10" Swing

### Standard 21" Width

Model #	L x W	Economy Faucets		Heavy Duty Faucets	
		Faucets	Spout	Faucets	Spout
EUBDS-1014-X	14" x 21"	PBF-4-D-LF-X	3.5" GN	PBF-4DM-3GLF-X	3" GN
EUBDS-1221-X	12" x 21"	PBF-4-D-10LF-X	10" Swing	-	-

## Underbar Hand Sink w/Soap & Towel Dispenser NSF

- 18GA Stainless Steel
- Stainless Steel Scrap Basket
- Soap & Paper Towel Dispenser
- Stainless Steel Legs & Bracing w/Adj Bullet Feet
- 4" O.C. Faucet Holes

- \* **REQUIRES SHALLOW SPLASHMOUNT FAUCET (SOLD SEPARATELY)**
- \* **FLEXIBLE WATER LINE CONNECTORS RECOMMENDED WITH SHALLOW MOUNT FAUCETS (SOLD SEPARATELY)**



PBF-W2-6LF-X

PBF-4SM2-6LF-X

EUBDS-1518STD-X

### Slim-Line 18" Width

Model #	L x W	Economy Shallow Mount Faucets		Heavy Duty Shallow Mount Faucets	
		Faucets	Spout	Faucets	Spout
EUBDS-1218STD-X *	12" x 18"	PBF-W2-3GLF-X	3.5" GN	PBF-4SM2-3GLF-X	3.5" GN
		-	-	PBF-4SM2-6LF-X	6" SWING
EUBDS-1518STD-X *	15" x 18"	PBF-W2-3GLF-X	3.5" GN	PBF-4SM2-3GLF-X	3.5" GN
		-	-	PBF-4SM2-6LF-X	6" SWING

### Standard 21" Width

Model #	L x W	Economy Shallow Mount Faucets		Heavy Duty Shallow Mount Faucets	
		Faucets	Spout	Faucets	Spout
EUBDS-1221STD-X *	12" x 21"	PBF-W2-3GLF-X	3.5" GN	PBF-4SM2-3GLF-X	3.5" GN
		-	-	PBF-4SM2-6LF-X	6" SWING
EUBDS-1521STD-X *	15" x 21"	PBF-W2-3GLF-X	3.5" GN	PBF-4SM2-3GLF-X	3.5" GN
		-	-	PBF-4SM2-6LF-X	6" SWING

### Flexible Water Line Connectors - Shallow Mount Faucets

Model #	Description
PB-WL-36-X	(2) Hoses Per Kit, (1) Red, (1) Blue



PB-WL-36



SMRFS-0620-NV

## Single, Double and Multi Compartment Sinks - "B-Series" 16 GA

- 16GA 300 Series Stainless Steel Bowl And Deck
- Stainless Steel Legs And Adj Bullet Feet

- Includes Front To Back Adj Stainless Bracing
- Note:** (Supplied with 2 Sets of Faucet Holes)



1B18244-X



1B18244-1D18L-X



1B18244-1D18R-X



1B16204-2D18-X

### 1 Compartment Sink - "B-Series" 16 GA

Model #	1 Compartment: Bowl Size (L x W x D)	L x W
1B16204-X	1 - 16" x 20" x 14"	21" x 25-1/2"
1B16204-1D18L-X/1D18R-X	1 - 16" x 20" x 14" (18" LH or RH Drain Board)	38" x 25-1/2"
1B16204-2D18-X	1 - 16" x 20" x 14" (18" LH & RH Drain Board)	55" x 25-1/2"
1B184-X	1 - 18" x 18" x 14"	23" x 23-1/2"
1B184-1D18L-X/1D18R-X	1 - 18" x 18" x 14" (18" LH or RH Drain Board)	40" x 23-1/2"
1B184-2D18-X	1 - 18" x 18" x 14" (18" LH & RH Drain Board)	57" x 23-1/2"
1B18244-X	1 - 18" x 24" x 14"	23" x 29-1/2"
1B18244-1D18L-X/1D18R-X	1 - 18" x 24" x 14" (18" LH or RH Drain Board)	40" x 29-1/2"
1B18244-1D24L-X/1D24R-X	1 - 18" x 24" x 14" (24" LH or RH Drain Board)	46" x 29-1/2"
1B244-X	1 - 24" x 24" x 14"	29" x 29-1/2"
1B244-1D24L-X/1D24R-X	1 - 24" x 24" x 14" (24" LH or RH Drain Board)	52" x 29-1/2"



2B18244-X



2B18244-1D18L-X



2B18244-1D18R-X



2B18244-2D18-X

### 2 Compartment Sinks - "B-Series" 16 GA

Model #	2 Compartment: Bowl Size (L x W x D)	L x W
2B16204-X	2 - 16" x 20" x 14"	37" x 25-1/2"
2B16204-1D18L-X/1D18R-X	2 - 16" x 20" x 14" (18" LH or RH Drain Board)	54" x 25-1/2"
2B16204-2D18-X	2 - 16" x 20" x 14" (18" LH & RH Drain Board)	71" x 25-1/2"
2B184-X	2 - 18" x 18" x 14"	41" x 23-1/2"
2B184-1D18L-X/1D18R-X	2 - 18" x 18" x 14" (18" LH or RH Drain Board)	58" x 23-1/2"
2B184-2D18-X	2 - 18" x 18" x 14" (18" LH & RH Drain Board)	75" x 23-1/2"
2B18244-X	2 - 18" x 24" x 14"	41" x 29-1/2"
2B18244-1D18L-X/1D18R-X	2 - 18" x 24" x 14" (18" LH or RH Drain Board)	58" x 29-1/2"
2B18244-2D18-X	2 - 18" x 24" x 14" (18" LH & RH Drain Board)	75" x 29-1/2"
2B244-X	2 - 24" x 24" x 14"	53" x 29-1/2"
2B244-1D24L-X/1D24R-X	2 - 24" x 24" x 14" (24" LH or RH Drain Board)	76" x 29-1/2"
2B244-2D24-X	2 - 24" x 24" x 14" (24" LH & RH Drain Board)	99" x 29-1/2"



### Stainless Steel Legs & Feet For E-Series Compartment Sinks

Model #	Description
SLEG-20B-4-X	Set of 4 - 12" Deep Bowls
SLEG-22B-4-X	Set of 4 - 14" Deep Bowls
SLEG-24B-4-X	Set of 4 - 10" Deep Bowls

### Wall Corner Guards

- 16GA Stainless Steel
- 2" x 2" and 4" x 4" Sizes
- Available For Inside Or Outside Corners
- Sold Individually



Model #	Size (Lx W x H)	Description
CORNER482-OUT-X	2" x 2" x 48"	Outside Corner
CORNER602-OUT-X	2" x 2" x 60"	Outside Corner
CORNER962-OUT-X	2" x 2" x 96"	Outside Corner
CORNER484-OUT-X	4" x 4" x 48"	Outside Corner
CORNER484-IN-X	4" x 4" x 48"	Inside Corner



3B18244-X



3B18244-1D18L-X



3B18244-1D18R-X



3B18244-2D18-X

### 3 Compartment Sinks - "B-Series" 16 GA

Model #	3 Compartment: Bowl Size (L x W x D)	L x W
3B16204-X	3 - 16" x 20" x 14"	53" x 25-1/2"
3B16204-1D18L-X/1D18R-X	3 - 16" x 20" x 14" (18" LH or RH Drain Board)	70" x 25-1/2"
3B16204-2D18-X	3 - 16" x 20" x 14" (18" LH & RH Drain Board)	87" x 25-1/2"
3B16204-2D24-X	3 - 16" x 20" x 14" (24" LH & RH Drain Board)	99" x 25-1/2"
3B184-X	3 - 18" x 18" x 14"	59" x 23-1/2"
3B184-1D18L-X/1D18R-X	3 - 18" x 18" x 14" (18" LH or RH Drain Board)	76" x 23-1/2"
3B184-2D18-X	3 - 18" x 18" x 14" (18" LH & RH Drain Board)	93" x 23-1/2"
3B18244-X	3 - 18" x 24" x 14"	59" x 29-1/2"
3B18244-1D18L-X/1D18R-X	3 - 18" x 24" x 14" (18" LH or RH Drain Board)	76" x 29-1/2"
3B18244-2D18-X	3 - 18" x 24" x 14" (18" LH & RH Drain Board)	93" x 29-1/2"
3B18244-2D24-X	3 - 18" x 24" x 14" (24" LH & RH Drain Board)	105" x 29-1/2"
3B20304-2D20-X	3 - 20" x 30" x 14" (20" LH & RH Drain Board)	103" x 35-1/2"
3B20304-2D24-X	3 - 20" x 30" x 14" (24" LH & RH Drain Board)	111" x 35-1/2"
3B244-X <span style="color:red">●●●●</span>	3 - 24" x 24" x 14"	77" x 29-1/2"
3B244-2D24-X <span style="color:red">●●●●</span>	3 - 24" x 24" x 14" (24" LH & RH Drain Board)	123" x 29-1/2"



4B18244-2D18-X

### 4 Compartment Sinks - "B-Series" 16 GA

Model #	4 Compartment: Bowl Size (L x W x D)	L x W
4B18244-2D18-X <span style="color:red">●●●●</span>	4 - 18" x 24" x 14" (18" LH & RH Drain Board)	111" x 29-1/2"

### Compartment Sink Side Splash

- 18GA 300 Stainless Steel
- Fits Left or Right Side Of Sink
- Sold Individually



Model #	Fits Bowl Width
PB-RES-18-X	18"
PB-RES-20-X	20"
PB-RES-24-X	24"

### Floor Troughs

- 14GA 300 Series Construction With Mounting Flange
- 4" Round Stainless Steel No-Hub Pipe Connection
- Removable Drain Basket

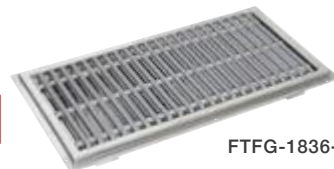
★ Ships Within 5 Business Days!



FTSG-1836-X



NEW



FTFG-1836-X

### Stainless Steel Grates

- Removable 3/16" x 1" Flatbar Subway Grating

Model #	L x W
FTSG-1224-X	24" x 12"
FTSG-1236-X	36" x 12"
FTSG-1248-X	48" x 12"
FTSG-1260-X	60" x 12"
FTSG-1272-X	72" x 12"
FTSG-1824-X	24" x 18"
FTSG-1836-X	36" x 18"
FTSG-1848-X	48" x 18"
FTSG-1860-X	60" x 18"

NEW!

### Fiberglass Grates

- Removable Gray Fiberglass Subway-Style Grating With Non-Slip Surface

Model #	L x W
FTFG-1224-X	24" x 12"
FTFG-1236-X	36" x 12"
FTFG-1248-X	48" x 12"
FTFG-1260-X	60" x 12"
FTFG-1272-X	72" x 12"
FTFG-1824-X	24" x 18"
FTFG-1836-X	36" x 18"
FTFG-1848-X	48" x 18"
FTFG-1860-X	60" x 18"

NEW!

SMPF-SF0620-NV

## "E-Series" Compartment Sinks 18 GA

- 18GA 300 Series Stainless Steel Bowl And Deck
- Galvanized Legs And Adj Plastic Bullet Feet
- 8" O.C. Faucet Holes



E1S8-18-12-X

### 1 Compartment Sink - "E-Series" 18 GA

Model #	1 Compartment: Bowl Size (L x W x D)	L x W
E1S8-1620-12-X	1 - 16" x 20" x 12"	21" x 25-1/2"
E1S8-1620-12L18-X/12R18-X	1 - 16" x 20" x 12" (18" LH or RH Drain Board)	36-1/2" x 25-1/2"
E1S8-18-12-X	1 - 18" x 18" x 12"	23" x 23-1/2"
E1S8-18-12L18-X/12R18-X	1 - 18" x 18" x 12" (18" LH or RH Drain Board)	38-1/2" x 23-1/2"
E1S8-15-14-X	1 - 15" x 15" x 14"	19" x 20-1/2"
E1S8-15-14L15-X/R15-X	1 - 15" x 15" x 14" (15" LH or RH Drain Board)	33" x 20-1/2"
E1S8-15-14T15-X	1 - 15" x 15" x 14" (15" LH & RH Drain Board)	47" x 20-1/2"
E1S8-24-14-X	1 - 24" x 24" x 14"	29" x 29-1/2"

### 2 Compartment Sink - "E-Series" 18 GA

Model #	2 Compartment: Bowl Size (L x W x D)	L x W
E2S8-18-12L18-X/12R18-X	2 - 18" x 18" 12" (18" LH or RH Drain Board)	56-1/2" x 23-1/2"

### 3 Compartment Sinks - "E-Series" 18 GA

Model #	3 Compartment: Bowl Size (L x W x D)	L x W
E3S8-1014-10-X	3 - 10" x 14" x 10"	35" x 19-1/2"
E3S8-1014-10L15-X/10R15-X	3 - 10" x 14" x 10" (15" LH or RH Drain Board)	47-1/2" x 19-1/2"
E3S8-1014-10T15-X	3 - 10" x 14" x 10" (15" LH & RH Drain Board)	60" x 19-1/2"
E3S8-1416-12T12-X	3 - 14" x 16" x 12" (12" LH & RH Drain Board)	66" x 21-1/2"
E3S8-15-14T15-X	3 - 15" x 15" x 14" (15" LH & RH Drain Board)	75" x 20-1/2"
E3S8-1620-12T18-X	3 - 16" x 20" x 12" (18" LH & RH Drain Board)	84" x 25-1/2"
E3S8-18-12-X	3 - 18" x 18" 12"	59" x 23-1/2"
E3S8-18-12T18-X	3 - 18" x 18" 12" (18" LH & RH Drain Board)	90" x 23-1/2"
E3S8-1824-14T24-X	3 - 18" x 24" x 14" (24" LH & RH Drain Board)	104" x 29-1/2"



E3S8-18-12T18-X

## 3 Compartment Corner Sinks



- 14" Deep Fabricated Bowls
- 8" O.C. Faucet Holes

### 16GA - "B Series" - Stainless Steel Legs & Adjustable Bracing

Model #	Bowl Size (L x W x D)	L x W
3BCS-184-2D18-X	18" x 18" x 14" (18" LH & RH Drain Board)	58-1/2" x 23-1/2"

### 18GA - "E Series" - Galvanized Legs & Adjustable Bracing

Model #	Bowl Size (L x W x D)	L x W
E3BCS-184-2D18-X	18" x 18" x 14" (18" LH & RH Drain Board)	58-1/2" x 23-1/2"
E3BCS-244-2D24-X	24" x 24" x 14" (24" LH & RH Drain Board)	75" x 29-1/2"



3BCS-184-2D18-X

## Mop Sinks

- 16GA 300 Series Stainless Steel
- Available In 6" Or 12" Deep Bowls (Does not include faucet.)



PBMS2016-6-X



PBF-SS-6-X

Model #	Sink Size (L x W x D)	L x W
PBMS2016-6-X	20" x 16" x 6" (6" High Water Level)	24-5/8" x 19-1/8"
PBMS2016-12-X	20" x 16" x 12" (12" High Water Level)	24-5/8" x 19-1/8"
PBMS2424-6-X	24" x 24" x 6" (6" High Water Level)	28-5/8" x 27-3/8"
PBMS2424-12-X	24" x 24" x 12" (12" High Water Level)	28-5/8" x 27-3/8"

Model #	Description
PBF-SS-6-X	Service Faucet w/Vacuum Breaker

## Mobile Soak Sink

- 16GA 300 Series Stainless Steel
- Marine Edge With Corner Bumpers
- Stainless Steel Legs w/ Locking Casters



Model #	Sink Size (L x W x D)
PB-SS-208-X	20" x 20" x 8", 20" Work Height, w/Twist Waste



## Economy Prep Worktables w/ Sink Bowl

- 18GA Stainless Steel Construction
- Optional Stainless Steel or Galvanized Legs and Undershelf
- Sink Bowl 16"x20"x10" deep with 4" O.C. Faucet Holes
- Table Punched for 4" Deck Mount Faucet (Faucet Not Included)

### Stainless Steel Legs & Undershelf

Model #	Sink Size (L x W x D)	L x W
EPT8R5-3048SSK-L-X/SSK-R-X	16" x 20" x 10" (LH or RH)	48" x 30"
EPT8R5-3060SSK-L-X/SSK-R-X	16" x 20" x 10" (LH or RH)	60" x 30"
EPT8R5-3072SSK-L-X/SSK-R-X	16" x 20" x 10" (LH or RH)	72" x 30"

### Galvanized Legs & Undershelf

Model #	Sink Size (L x W x D)	L x W
EPT8R5-3048GSK-L-X/GSK-R-X	16" x 20" x 10" (LH or RH)	48" x 30"
EPT8R5-3060GSK-L-X/GSK-R-X	16" x 20" x 10" (LH or RH)	60" x 30"
EPT8R5-3072GSK-L-X/GSK-R-X	16" x 20" x 10" (LH or RH)	72" x 30"



EPT8R5-3060SSK-R-X

## Prep Worktables w/Sink Bowl

- 16GA 300 Series Stainless Steel
- Includes 4" Deckmount Faucet And 10" Spout (PBF-4DM-10LF-X)
- Adjustable Undershelf

### Prep Tables w/Galvanized Legs & Adjustable Undershelf

Model #	Sink Size (L x W x D)	L x W
EPT6R5-3048GSK-L-X/GSK-R-X	16" x 20" x 12" (LH or RH)	48" x 30"
EPT6R5-3060GSK-L-X/GSK-R-X	16" x 20" x 12" (LH or RH)	60" x 30"
EPT6R5-3072GSK-L-X/GSK-R-X	16" x 20" x 12" (LH or RH)	72" x 30"

### Prep Tables w/Stainless Steel Legs & Adjustable Undershelf

Model #	Sink Size (L x W x D)	L x W
EPT6R5-3048SSK-L-X/SSK-R-X	16" x 20" x 12" (LH or RH)	48" x 30"
EPT6R5-3060SSK-L-X/SSK-R-X	16" x 20" x 12" (LH or RH)	60" x 30"
EPT6R5-3072SSK-L-X/SSK-R-X	16" x 20" x 12" (LH or RH)	72" x 30"



EPT6R5-3060GSK-L-X



EPT6R5-3060SSK-L-X

## Wall Mounted Sorting Shelves

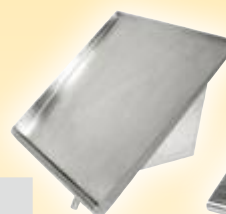
- 18GA 300 Series Stainless Steel
- Solid Shelf-Drain Tube In Corner

### Solid Sorting Shelves

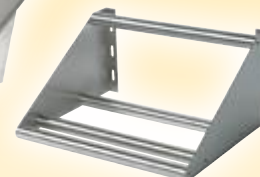
Model #	Description
PB-SRW-21-X	21" x 18"
PB-SRW-42-X	42" x 18"
PB-SRW-63-X	63" x 18"

### Tubular Sorting Shelves

Model #	Description
BHS1822-TS-X	22" x 18"
BHS1842-TS-X	42" x 18"
BHS1863-TS-X	63" x 18"



PB-SRW-21-X



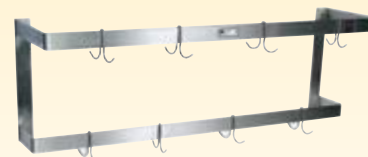
BHS1822-TS-X

## Stallion Pot Racks

- 300 Series Stainless Steel
- Made of 3/16" x 2" Stainless Steel Flat Bar
- All Racks Provided With T-304 Stainless Steel Hooks  
(See Chart For Quantity Per Size.)



PRW11-X



PRW21-X

### Single Bar - Wall Mount Pot Racks - PRW1

Model #	Length	#Hooks
PRW11-X	48"	4
PRW12-X	60"	5
PRW13-X	72"	6
PRW14-X	96"	8

### Double Bar - Wall Mount Pot Racks - PRW2

Model #	Length	#Hooks
PRW21-X	48"	8
PRW22-X	60"	10
PRW23-X	72"	12
PRW24-X	96"	16

SMPF-SF0620-NV

## Pro-Bowl Dishtables - 16GA

- 16GA 300 Series Stainless Steel
- 20-7/8" Opening
- Soiled Dishtable Includes An Integrally Welded Bowl 20" x 20" x 8"
- Stainless Steel Legs & Bracing w/Adj Stainless Bullet Feet

### Clean Dishtables - Straight

Model #	Description	L x W
JDTC-20-26L-X/26R-X	26" Long (LH or RH)	26" x 30"
JDTC-20-36L-X/36R-X	36" Long (LH or RH)	36" x 30"
JDTC-20-48L-X/48R-X	48" Long (LH or RH)	48" x 30"
JDTC-20-60L-X/60R-X	60" Long (LH or RH)	60" x 30"
JDTC-20-72L-X/72R-X	72" Long (LH or RH)	72" x 30"

### Soiled Dishtables - Straight - 20" x 20" x 8" Sink Bowl

Model #	Description	L x W
JDTS-20-36L-X/36R-X	36" Long (LH or RH)	36" x 30"
JDTS-20-48L-X/48R-X	48" Long (LH or RH)	48" x 30"
JDTS-20-60L-X/60R-X	60" Long (LH or RH)	60" x 30"
JDTS-20-72L-X/72R-X	72" Long (LH or RH)	72" x 30"



JDTC-20-60R



JDTS-20-60L-X

## Dishtables - "E-Series" 18GA

- 18GA 300 Series Stainless Steel
- 20-7/8" Opening
- Soiled Dishtable Includes An Integrally Welded Bowl 20" x 20" x 8"
- Galvanized Legs & Bracing w/Adj Plastic Bullet Feet

Note: \*\* Indicates 16" x 20" x 8" Sink Bowl

### Clean Dishtables - Straight

Model #	Description	L x W
EDTC8-S30-L26-X/R26-X	26" Long (LH or RH)	26" x 30"
EDTC8-S30-L36-X/R36-X	36" Long (LH or RH)	36" x 30"
EDTC8-S30-L48-X/R48-X	48" Long (LH or RH)	48" x 30"
EDTC8-S30-L60-X/R60-X	60" Long (LH or RH)	60" x 30"
EDTC8-S30-L72-X/R72-X	72" Long (LH or RH)	72" x 30"

### Soiled Dishtables - Straight - 20" x 20" x 8" Sink Bowl

Model #	Description	L x W
EDTS8-S30-L26-X/R26-X **	26" Long (LH or RH)	26" x 30"
EDTS8-S30-L36-X/R36-X	36" Long (LH or RH)	36" x 30"
EDTS8-S30-L48-X/R48-X	48" Long (LH or RH)	48" x 30"
EDTS8-S30-L60-X/R60-X	60" Long (LH or RH)	60" x 30"
EDTS8-S30-L72-X/R72-X	72" Long (LH or RH)	72" x 30"



EDTC8-S30-R60



EDTS8-S30-L60

## Pro-Bowl Undercounter Dishtables

- Soiled Dish Table Includes An Integrally Welded Bowl 20" x 20" x 8" With 8" O.C. Faucet Holes
- Available In Left Side or Right Side Sink Bowl Location

### 16GA - Stainless Steel Legs And Adj Metal Bullet Feet

Model #	Bowl Size (L x W x D)	L x W
JDTS-20-50UCL-X/50UCR-X	20" x 20" x 8", (LH or RH)	50" 30"

### 18GA "E-Series" - Galvanized Legs And Adj Plastic Bullet Feet

Model #	Bowl Size (L x W x D)	L x W
EDTS8-S30-50UCL-X/50UCR-X	20" x 20" x 8", (LH or RH)	50" x 30"



EDTS8-S30-50UCL-X

## Clean Dishtables/Pot Sinks NSF "B-Series" 16GA

- 16GA 300 Series Stainless Steel Construction
- 18" x 24" x 14" Deep Sink Bowls
- 3 Rack Slides w/Storage Bracket
- 2 Drainboards
- Stainless Steel Legs & Bracing w/Adj Bracing Front To Back



DT3B18244-2D18R-X

### Clean Dishtables/Pot Sinks

Model #	Bowl Size (L x W x D)	L x W
DT3B18244-2D18L-X/2D18R-X	18" x 24" x 14" (18" LH or RH Drain Board) (NSF CERTIFIED)	91-1/2" x 30"
DT3B18244-2D24L-X/2D24R-X	18" x 24" x 14" (24" LH or RH Drain Board) (NSF CERTIFIED)	103" x 30"

## Heavy Duty Machine Stands NSF

- 14GA 300 Series Stainless Steel
- 1-5/8" Legs & Bracing w/Adj Metal Bullet Feet
- Stainless Steel Legs & Adj Undershelf
- Marine Edge: 20" Tall
- Shipped Knocked Down Easy-To-Assemble



### Stainless Steel Legs & Undershelf

Model #	L x W
MS4-2424SSK-X	24" x 24"
MS4-2430SSK-X	30" x 24"

## Universal Deep Fryer Splash Guard



- 18GA 300 Stainless Steel
- Fits Left Or Right Side Of Fryer
- Sold Individually

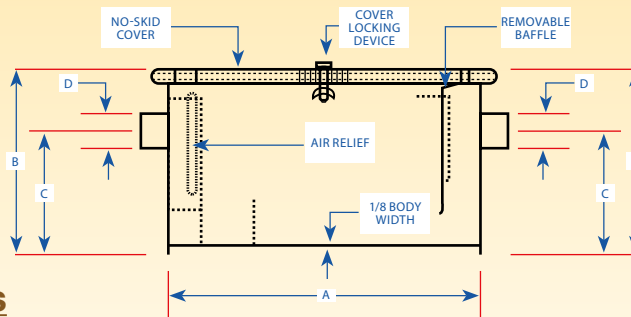
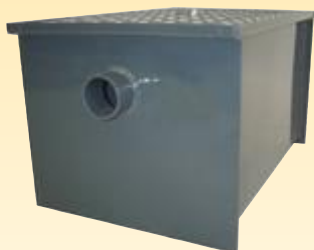
Model #	L x H
FSG-2018-X	20" x 18"



GT40-GT100



GT8-GT30



## Carbon Steel Grease Interceptors

Model #	Size	Width	G.P.M Capacity	Grease Capacity (lbs)	A	B	C	D
GT-8-X	8#	10.5"	4	8	14.2"	11.2"	7.5"	2"
GT-14-X	14#	13.5"	7	14	16.2"	18.3"	8.1"	2"
GT-20-X	20#	14.5"	10	20	20.1"	12.1"	8.1"	2"
GT-30-X	30#	16"	15	30	20.5"	13.8"	10.4"	2.5"
GT-40-X	40#	16"	20	40	22.5"	15"	11.5"	3"
GT-50-X	50#	17.5"	25	50	24.5"	16.5"	12"	3"
GT-70-X	70#	18"	35	70	28.5"	19.3"	14.1"	3.5"
GT-100-X	100#	22.25"	50	100	30.5"	21.5"	16.1"	4"



# PRO-BOWL DROP-IN HAND SINKS PEDESTAL HAND SINK



WESTERN REGION FOODSERVICE EQUIPMENT FLYER

Phone: (888) 431-2667

SMPP-SF0620-NV



## Drop-In Hand Sinks

### 1 Bowl

Model #	Bowl Size (L x W x D)	Sink Size (L x W x D)	Certification	Side Splash
A. PB-DISINK090905-X	9" x 9" x 5"	12" x 14" x 5"	NSF® COMPONENT	N/A
PB-DISINK090905-SSLR-X	9" x 9" x 5"	12" x 14" x 5"	N/A	LH & RH
B. PB-DISINK151506-X	12-1/2" x 10-1/2" x 6"	15" x 15" x 6"	NSF® COMPONENT	N/A
C. PB-DISINK101405-X	10" x 14" x 5"	12-1/4" x 18" x 5"	NSF® COMPONENT	N/A
D. PB-DISINK101410-X	10" x 14" x 10"	12-1/4" x 18" x 10"	NSF® COMPONENT	N/A
E. PB-DISINK101405-P-SSLR-X	10" x 14" x 5"	12-1/2" X 18-3/4" X 10"	NSF® COMPONENT (Faucet Included: PBF-4-D-LF-X)	LH & RH
F. PB-DISINK101410-P-SSLR-X	10" x 14" x 10"	12-1/2" X 18-3/4" X 10"	NSF® COMPONENT (Faucet Included: PBF-4-D-LF-X)	LH & RH

### 2 Bowl

Model #	Bowl Size (L x W x D)	Sink Size (L x W x D)	Certification	Side Splash
G. PB-DISINK101410-2-X	10" x 14" x 10" (2 Bowl)	24" x 18" x 10"	NSF® COMPONENT	N/A

### 3 Bowl

Model #	Bowl Size (L x W x D)	Sink Size (L x W x D)	Certification	Side Splash
H. PB-DISINK101410-3-X	10" x 14" x 10" (3 Bowl)	36" x 18" x 10"	NSF® COMPONENT	N/A

## Pedestal Hand Sink



- 16GA Type 300 Stainless Steel
- Drain Size: 3-1/2"
- Removable Access Panel On Right Side
- Mounts Securely To The Floor
- Includes Foot Valve and Gooseneck Faucet (PB-FV-2LF-X)



PB-FV-2LF-X



## Wall Mount Side Splash

- 18GA Type 300 Stainless Steel
- Side Splash Each Sold Separately

Model #	Description	L x H
WMSG-2424-X	LH or RH	24" x 24"

Model #	Bowl Size (L x W x H)
PBHS-F-1410-X	14" x 10" x 5"



**NEW**

## Pro-Bowl Hand Sinks

Model #	Sink Size (L x W x D)	Faucet Location	Side Splash
I. PBHS-W-KVMB-1-X	14" x 10" x 5" (1-7/8" Drain)	Splash Mount - 1 Hole Centered <b>(Goose Neck Spout And Knee Valves Included.)</b>	N/A
J. PBHS-W-KVMB-SSP-X	14" x 10" x 5" (1-7/8" Drain)	Splash Mount - 1 Hole Centered <b>(Goose Neck Spout And Knee Valves Included.)</b>	LH & RH
K. PB-TD-0909-X	N/A	Wall Mount Towel Dispenser For 9"X9" Hand Sink	N/A
L. PBHS-W-0909-X	9" x 9" x 5" (1-7/8" Drain)	Splash Mount - 4" On-Center	N/A
M. PBHS-W-0909-SSLR-X	9" x 9" x 5" (1-7/8" Drain)	Splash Mount - 4" On-Center	LH & RH
N. PBHS-W-1410-X	14" x 10" x 5" (1-7/8" Drain)	Splash Mount - 4" On-Center	N/A
O. PBHS-W-1410-P-X	14" x 10" x 5" (1-7/8" Drain)	Splash Mount - 4" On-Center <b>(Faucet Included)</b>	N/A
P. PBHS-W-1410-SSLR-X	14" x 10" x 5" (1-7/8" Drain)	Splash Mount - 4" On-Center	LH & RH
Q. PBHS-W-1410-1-X	14" x 10" x 5" (1-7/8" Drain)	Splash Mount - 1 Hole Centered	N/A
R. PBHS-W-1410-1-SSLR-X	14" x 10" x 5" (1-7/8" Drain)	Splash Mount - 1 Hole Centered	LH & RH
S. PBHS-W-0909-TD-SSLR-X	9" X 9" X 5" (2" Drain)	Towel Dispenser Deck Mount - 4" On-Center	LH & RH

**NEW!**



NOT NSF CERTIFIED

## Pro-Bowl Hand Sinks

Model #	Sink Size (L x W x D)	Faucet Location	Side Splash
T. PBHS-W-1410-P-SSLR-X	14" x 10" x 5"	Splash Mount - 4" On-Center <b>(Faucet Included)</b>	LH & RH
U. PBHS-W-1410-4D-X	14" x 10" x 5" (3-1/2" Drain)	Splash Mount - 4" On-Center	N/A
V. PBHS-W-1410-2DM-X	14" x 10" x 5"	Deck Mount - 4" On-Center	N/A
W. PBHS-W-1410-2DM-SSLR-X	14" x 10" x 5"	Deck Mount - 4" On-Center	LH & RH
X. PB-STD-1410-X	N/A	Wall Mount Soap & Towel Dispenser Only. For 14x10 Hand Sink. Includes Soap Dispenser.	N/A
Y. PBHS-ADA-P-STD-X	14" x 16" x 5" (1-7/8" Drain)	Splash Mount - 4" On-Center <b>(Removable Front Panel. Goose Neck Faucet, Soap &amp; Paper Towel Dispenser Included.)</b>	N/A
Z. PBHS-W-1416ADAS-X	14" x 16" x 5" (1-7/8" Drain)	Splash Mount - 4" On-Center	N/A
AA. PBHS-W-1616-X	16" x 16" x 10" (3-1/2" Drain)	Deck Mount - 1 Hole Centered	N/A
AB. PBHS-W-1616-SSLR-X	16" x 16" x 10" (3-1/2" Drain)	Deck Mount - 1 Hole Centered	LH & RH

SMPPF-SF0620-NV

## Low-Lead Faucets

Environmentally Friendly! Less than .25% lead within brass alloy content for healthier drinking water.

- 1/4" Turn Ceramic Cartridges
- Color Coded Hot & Cold Indicators
- Double O-Ring Spout Seal
- High Polished Nickel Chrome Finish

### Heavy Duty Faucets

Model #	On-Center	Description	Spout
A. PBF-8-SLF-X	8"	Splash Mount	8" Swing
PBF-10-SLF-X	8"	Splash Mount	10" Swing
PBF-12-SLF-X	8"	Splash Mount	12" Swing
PBF-14-SLF-X	8"	Splash Mount	14" Swing
B. PBF-18-DJSLF-X	8"	Splash Mount	18" Swing - Double
PBF-4SM-3MGLF-X	4"	Splash Mount	3" Gooseneck
C. PBF-4SM-3GLF-X	4"	Splash Mount	3.5" Gooseneck
PBF-4SM-5GLF-X	4"	Splash Mount	5" Gooseneck
D. PBF-4DM-3GLF-X	4"	Deck Mount	3.5" Gooseneck
PBF-4DM-5GLF-X	4"	Deck Mount	5" Gooseneck
PBF-4DM-10LF-X	4"	Deck Mount	10" Swing
PBF-4DM-12LF-X	4"	Deck Mount	12" Swing

### Economy Faucets

Model #	On-Center	Description	Spout
E. PBF-4-S-LF-X	4"	Splash Mount	3.5" Gooseneck
F. PBF-4-D-LF-X	4"	Deck Mount	3.5" Gooseneck
PBF-4-D-10LF-X	4"	Deck Mount	10" Swing

### Heavy Duty Shallow Mount Faucets

Model #	On-Center	Description	Spout
G. PBF-4SM2-6LF-X	4"	Shallow Splash Mount	6" Swing
PBF-4SM2-8LF-X	4"	Shallow Splash Mount	8" Swing
PBF-4SM2-10LF-X	4"	Shallow Splash Mount	10" Swing
H. PBF-4SM2-3GLF-X	4"	Shallow Splash Mount	3.5" Gooseneck
PBF-4SM2-5GLF-X	4"	Shallow Splash Mount	5" Gooseneck

### Economy Shallow Mount Faucets

Model #	On-Center	Description	Spout
I. PBF-W2-6LF-X	4"	Shallow Splash Mount	6" Swing
PBF-W2-8LF-X	4"	Shallow Splash Mount	8" Swing
J. PBF-W2-3GLF-X	4"	Shallow Splash Mount	3.5" Gooseneck

### Pre-Rinse Unit

Model #	On-Center	Description	Spout
K. PB-PRW-1LF-X	8"	Splash Mount	Pre-Rinse Unit

### Add-On Faucet

Model #	Spout
L. PB-AD-8LF-X	8" Swing Add-On
PB-AD-10LF-X	10" Swing Add-On
PB-AD-12LF-X	12" Swing Add-On
PB-AD-14LF-X	14" Swing Add-On

### Flexible Water Line Connectors - Shallow Mount Faucets

Model #	Description
M. PB-WL-36-X	(2) Hoses Per Kit, (1) Red, (1) Blue

### Hands-Free Faucet With Electric Sensor

Model #	Description	Spout
N. PBF-SEF3GLF-X	Splash Moun With Electic Sensort	3" Gooseneck

### Manual Temperature Mixing Valve With Built-In Check Valves

Model #	Description
O. PB-MV-X	Manual Temperature Mixing Valve w/Built-In Check Valves



## Lever Drains



Model #	Description
PB-LWR-1-X	Twist, 3.5" Drain Opening, 2" Outlet
PB-LWS-1-X	Straight, 3.5" Drain Opening, 2" Outlet

## S/S Wrist Blades



Model #	Description
PB-WR-X	1 Pair, Use w/ Heavy Duty Faucets Only



REMOVABLE PANS



4CD4-2724-CL-X

## Mobile Drawer Cabinet NSF



- 18GA Type 300 Stainless Steel
- Stainless Steel Flat Top With Front Stallion Edge
- 3 Tier Drawer (Available With and Without Locks)
- Removable Pans
- Heavy Duty 5" Locking Casters
- Overall Height 33-3/4"

Model #	Description	L x W
4CD4-2724-C-X	Locks - N/A	24" x 26-1/2"
4CD4-2730-C-X	Locks - N/A	30" x 26-1/2"
4CD4-2724-CL-X	Locks - Included	24" x 26-1/2"
4CD4-2730-CL-X	Locks - Included	30" x 26-1/2"

## Janitor & Mat Washing Cabinet

- 18GA Type 300 Stainless Steel With #4 Polish Satin Finish
- (2) Swing Double Panel Doors With Lock Handle
- Mat Hangers
- (1) Oversized Sink 38" x 20" x 6" with 3-1/2" Drain
- (1) Side Mounted Mop/Broom Holder With Locking Cam
- (1) Fold Down Chemical Shelf
- (1) Heavy Duty Service Faucet And (1) 10' Hose
- Vented Door Panels



Model #	Dimensions (L x W x H)	Mop Sink Size (L x W x H)
PBMC-432683-X	43" x 26" x 83"	38" x 20" x 6"

**COMING SOON!**

New Improved Design. Call for availability.  
(Model #: PBMC-224884-X)

## Economy Dish Storage Cabinet NSF

- 18GA 300 Series Stainless Steel
- Fixed Mid-Shelf

Model #	L x W
EDSC8-1548-X	48" x 15"
EDSC8-1560-X	60" x 15"
EDSC8-1572-X	72" x 15"
EDSC8-1848-X	48" x 18"
EDSC8-1860-X	60" x 18"
EDSC8-1872-X	72" x 18"



EDSC8-1548-X

## Hand Sinks With Knee Activated Faucet

### Hinged Front Apron

- Type 300 Stainless Steel
- Deep Drawn Bowl: 14" x 10" x 5"
- Drain Size: 1-7/8"
- Knee Activated Faucet With Hinged Front Apron

**EYE WASH DISCLAIMER**

IMPORTANT: Faucet-mounted eyewash requires two motions to operate (turn on water, pull knob to activate eyewash flow). Therefore, John Boos does not believe that these units meet the provisions of ANSI Z358.1-2014 as eyewash units. These units are intended solely as supplemental units in addition to dedicated, plumbed eyewash equipment installed in the workplace. Faucet-mounted eyewashes should be used with cold or warm water only. Use of hot water might cause scalding. Eyewash attachment not to be used with electronic faucets.



### With Eye Wash Attachment

Model #	Sink Size (L x W x D)	Faucet Location	Side Splash
PBHS-W-KV1APS-EW-X	17" x 15-1/2" x 22"	Splash Mount - 1 Hole Centered	N/A
PBHS-W-KV1APS-EW-SSLR-X	17" x 15-1/2" x 22"	Splash Mount - 1 Hole Centered	LH & RH

### Without Eye Wash Attachment

Model #	Sink Size (L x W x D)	Faucet Location	Side Splash
PBHS-W-KV1APS-X	17" x 15-1/2" x 22"	Splash Mount - 1 Hole Centered	N/A
PBHS-W-KV1APS-SSLR-X	17" x 15-1/2" x 22"	Splash Mount - 1 Hole Centered	LH & RH



## "E-Series" Budget Work Tables NSF

- 18GA Type 430 Stainless Steel Flat Top Tables
- Stallion Edge Both Faces, Straight Turn Down On Sides
- Adjustable Lower Shelf
- Legs And Plastic Bullet Feet
- Shipped Knocked-Down, Easy-To-Assemble



FBLG4830-X

ASSEMBLY VIDEO ONLINE  
YOUTUBE.COM/JOHNBOOSCO



FBLGR5-4830-X

## Flat Top Tables Galvanized Legs & Adjustable Undershelf

Model #	L x W
FBLG3618-X	36" x 18"
FBLG4818-X	48" x 18"
FBLG6018-X	60" x 18"
FBLG7218-X	72" x 18"
FBLG9618-X	96" x 18"
FBLG2424-X	24" x 24"
FBLG3024-X	30" x 24"
FBLG3624-X	36" x 24"
FBLG4824-X	48" x 24"
FBLG6024-X	60" x 24"
FBLG7224-X	72" x 24"
FBLG3630-X	36" x 30"
FBLG4830-X	48" x 30"
FBLG6030-X	60" x 30"
FBLG7230-X	72" x 30"
FBLG9630-X	96" x 30"

## 5" Riser Top Table Galvanized Legs & Adjustable Undershelf

Model #	L x W
FBLGR5-2424-X	24" x 24"
FBLGR5-3024-X	30" x 24"
FBLGR5-3624-X	36" x 24"
FBLGR5-4824-X	48" x 24"
FBLGR5-6024-X	60" x 24"
FBLGR5-7224-X	72" x 24"
FBLGR5-8424-X	84" x 24"
FBLGR5-9624-X	96" x 24"
FBLGR5-3030-X	30" x 30"
FBLGR5-3630-X	36" x 30"
FBLGR5-4830-X	48" x 30"
FBLGR5-6030-X	60" x 30"
FBLGR5-7230-X	72" x 30"
FBLGR5-8430-X	84" x 30"
FBLGR5-9630-X	96" x 30"

## Economy Overshelves NSF

- 18GA 300 Series Stainless Steel
- Double Overshelves Including Adjustable Lower Shelf

### Single Economy Overshelves

Model #	L x W
OS-ES-1248-X	48" x 12"
OS-ES-1260-X	60" x 12"
OS-ES-1272-X	72" x 12"
OS-ES-1296-X	96" x 12"
OS-ES-1848-X	48" x 18"
OS-ES-1860-X	60" x 18"
OS-ES-1872-X	72" x 18"
OS-ES-1896-X	96" x 18"



OS-ES-1248-X  
(Does Not Include Table)

### Double Economy Overshelves

Model #	L x W
OS-ED-1248-X	48" x 12"
OS-ED-1260-X	60" x 12"
OS-ED-1272-X	72" x 12"
OS-ED-1296-X	96" x 12"
OS-ED-1848-X	48" x 18"
OS-ED-1860-X	60" x 18"
OS-ED-1872-X	72" x 18"
OS-ED-1896-X	96" x 18"



OS-ED-1260-X  
(Does Not Include Table)

## Stallion Work Tables w/1.5" Turn Up Rear Riser Top NSF

- 16GA 300 Series Stainless Steel Top
- 1.5" Turn Up Rear Riser Top
- Stallion Edge, Straight Turndown on Sides
- Available With Adjustable Lower Shelf Or Lower Bracing
- Adjustable Metal Bullet Feet
- Shipped Knocked-Down, Easy-To-Assemble

Note: \* (Allow Up To 10 Days For Shipment)



ST6R1.5-3048SSK-X

### 1.5" Rear Riser With 18GA Stainless Steel Lower Shelf

Model #	L x W
ST6R1.5-2430SSK-X	30" x 24"
ST6R1.5-2436SSK-X	36" x 24"
ST6R1.5-2448SSK-X	48" x 24"
ST6R1.5-2460SSK-X	60" x 24"
ST6R1.5-2472SSK-X	72" x 24"
ST6R1.5-2484SSK-X	84" x 24"
ST6R1.5-2496SSK-X	96" x 24"
ST6R1.5-24108SSK-X *	108" x 24"
ST6R1.5-24120SSK-X *	120" x 24"
ST6R1.5-3030SSK-X	30" x 30"
ST6R1.5-3036SSK-X	36" x 30"
ST6R1.5-3048SSK-X	48" x 30"
ST6R1.5-3060SSK-X	60" x 30"
ST6R1.5-3072SSK-X	72" x 30"
ST6R1.5-3084SSK-X	84" x 30"
ST6R1.5-3096SSK-X	96" x 30"
ST6R1.5-30108SSK-X *	108" x 30"
ST6R1.5-30120SSK-X *	120" x 30"
ST6R1.5-3648SSK-X	48" x 36"
ST6R1.5-3660SSK-X	60" x 36"
ST6R1.5-3672SSK-X	72" x 36"
ST6R1.5-3684SSK-X	84" x 36"
ST6R1.5-3696SSK-X	96" x 36"

### 1.5" Rear Riser With 18GA Galvanized Lower Shelf

Model #	L x W
ST6R1.5-2430GSK-X	30" x 24"
ST6R1.5-2436GSK-X	36" x 24"
ST6R1.5-2448GSK-X	48" x 24"
ST6R1.5-2460GSK-X	60" x 24"
ST6R1.5-2472GSK-X	72" x 24"
ST6R1.5-2484GSK-X	84" x 24"
ST6R1.5-2496GSK-X	96" x 24"
ST6R1.5-24108GSK-X *	108" x 24"
ST6R1.5-24120GSK-X *	120" x 24"
ST6R1.5-3030GSK-X	30" x 30"
ST6R1.5-3036GSK-X	36" x 30"
ST6R1.5-3048GSK-X	48" x 30"
ST6R1.5-3060GSK-X	60" x 30"
ST6R1.5-3072GSK-X	72" x 30"
ST6R1.5-3084GSK-X	84" x 30"
ST6R1.5-3096GSK-X	96" x 30"
ST6R1.5-30108GSK-X *	108" x 30"
ST6R1.5-30120GSK-X *	120" x 30"
ST6R1.5-3648GSK-X	48" x 36"
ST6R1.5-3660GSK-X	60" x 36"
ST6R1.5-3672GSK-X	72" x 36"
ST6R1.5-3684GSK-X	84" x 36"
ST6R1.5-3696GSK-X	96" x 36"

### 1.5" Rear Riser With Stainless Steel Lower Bracing & Legs

Model #	L x W
ST6R1.5-2430SBK-X	30" x 24"
ST6R1.5-2436SBK-X	36" x 24"
ST6R1.5-2448SBK-X	48" x 24"
ST6R1.5-2460SBK-X	60" x 24"
ST6R1.5-2472SBK-X	72" x 24"
ST6R1.5-2484SBK-X	84" x 24"
ST6R1.5-2496SBK-X	96" x 24"
ST6R1.5-24108SBK-X *	108" x 24"
ST6R1.5-24120SBK-X *	120" x 24"
ST6R1.5-3030SBK-X	30" x 30"
ST6R1.5-3036SBK-X	36" x 30"
ST6R1.5-3048SBK-X	48" x 30"
ST6R1.5-3060SBK-X	60" x 30"
ST6R1.5-3072SBK-X	72" x 30"
ST6R1.5-3084SBK-X	84" x 30"
ST6R1.5-3096SBK-X	96" x 30"
ST6R1.5-30108SBK-X *	108" x 30"
ST6R1.5-30120SBK-X *	120" x 30"
ST6R1.5-3648SBK-X	48" x 36"
ST6R1.5-3660SBK-X	60" x 36"
ST6R1.5-3672SBK-X	72" x 36"
ST6R1.5-3684SBK-X	84" x 36"
ST6R1.5-3696SBK-X	96" x 36"

### 1.5" Rear Riser With Galvanized Lower Bracing & Legs

Model #	L x W
ST6R1.5-2430GBK-X	30" x 24"
ST6R1.5-2436GBK-X	36" x 24"
ST6R1.5-2448GBK-X	48" x 24"
ST6R1.5-2460GBK-X	60" x 24"
ST6R1.5-2472GBK-X	72" x 24"
ST6R1.5-2484GBK-X	84" x 24"
ST6R1.5-2496GBK-X	96" x 24"
ST6R1.5-24108GBK-X *	108" x 24"
ST6R1.5-24120GBK-X *	120" x 24"
ST6R1.5-3030GBK-X	30" x 30"
ST6R1.5-3036GBK-X	36" x 30"
ST6R1.5-3048GBK-X	48" x 30"
ST6R1.5-3060GBK-X	60" x 30"
ST6R1.5-3072GBK-X	72" x 30"
ST6R1.5-3084GBK-X	84" x 30"
ST6R1.5-3096GBK-X	96" x 30"
ST6R1.5-30108GBK-X *	108" x 30"
ST6R1.5-30120GBK-X *	120" x 30"
ST6R1.5-3648GBK-X	48" x 36"
ST6R1.5-3660GBK-X	60" x 36"
ST6R1.5-3672GBK-X	72" x 36"
ST6R1.5-3684GBK-X	84" x 36"
ST6R1.5-3696GBK-X	96" x 36"



ST6R1.5-3048SBK-X

### Optional Stainless Steel Legs With 5" Locking Casters

- Finished Working Height Of 35-3/4"
- Note: For Adding Casters To Existing Work Tables In Field

Model #	Desc.
SLEG-34.75C-4-X	Set of 4
SLEG-34.75C-6-X	Set of 6

## Stallion Work Tables w/Adjustable Stainless Steel Legs & Lower Shelf NSF

- 16GA 300 Series Stainless Steel
- Available In Flat Top or 5" High 1.5" Deep Clip-Down Riser
- Stallion Edge, Straight Turndown on Sides

- Stainless Steel Adjustable Lower Shelf
  - Stainless Steel Legs And Adj Metal Bullet Feet
  - Shipped Knocked-Down, Easy-To-Assemble
- Note: \* (Allow Up To 10 Days For Shipment)



ST6-3048SSK-X



ST6R5-3048SSK-X

ASSEMBLY VIDEO ONLINE  
YOUTUBE.COM/JOHNBOOSCO

### Flat Top Work Tables w/Lower Shelf

L x W	Model #
30" x 24"	ST6-2430SSK-X
36" x 24"	ST6-2436SSK-X
48" x 24"	ST6-2448SSK-X
60" x 24"	ST6-2460SSK-X
72" x 24"	ST6-2472SSK-X
84" x 24"	ST6-2484SSK-X
96" x 24"	ST6-2496SSK-X
108" x 24"	ST6-24108SSK-X *
120" x 24"	ST6-24120SSK-X *
30" x 30"	ST6-3030SSK-X
36" x 30"	ST6-3036SSK-X
48" x 30"	ST6-3048SSK-X
60" x 30"	ST6-3060SSK-X
72" x 30"	ST6-3072SSK-X
84" x 30"	ST6-3084SSK-X
96" x 30"	ST6-3096SSK-X
108" x 30"	ST6-30108SSK-X *
120" x 30"	ST6-30120SSK-X *
48" x 36"	ST6-3648SSK-X
60" x 36"	ST6-3660SSK-X
72" x 36"	ST6-3672SSK-X
84" x 36"	ST6-3684SSK-X
96" x 36"	ST6-3696SSK-X

### 5" Riser Top Work Tables w/Lower Shelf

L x W	Model #
30" x 24"	ST6R5-2430SSK-X
36" x 24"	ST6R5-2436SSK-X
48" x 24"	ST6R5-2448SSK-X
60" x 24"	ST6R5-2460SSK-X
72" x 24"	ST6R5-2472SSK-X
84" x 24"	ST6R5-2484SSK-X
96" x 24"	ST6R5-2496SSK-X
108" x 24"	ST6R5-24108SSK-X *
120" x 24"	ST6R5-24120SSK-X *
24" x 30"	ST6R5-3024SSK-X
30" x 30"	ST6R5-3030SSK-X
36" x 30"	ST6R5-3036SSK-X
48" x 30"	ST6R5-3048SSK-X
60" x 30"	ST6R5-3060SSK-X
72" x 30"	ST6R5-3072SSK-X
84" x 30"	ST6R5-3084SSK-X
96" x 30"	ST6R5-3096SSK-X
108" x 30"	ST6R5-30108SSK-X *
120" x 30"	ST6R5-30120SSK-X *

### Optional Stainless Steel Legs With 5" Locking Casters

- Finished Working Height Of 35-3/4"
- Note: For Adding Casters To Existing Work Tables In Field

Model #	Descriptions
SLEG-34.75C-4-X	Set of 4
SLEG-34.75C-6-X	Set of 6

### Self Closing Stainless Steel Drawers

- 20" x 20" x 5"
- Self Closing Drawer
- Stainless Steel Front Drawer And Pan



### Stainless Steel Roller Bearings

Model #	Descriptions
DR2020SC-S30-X	30" Wide Stainless Tables Only
DR2020SC-S36-X	36" Wide Stainless Tables Only
DR2020SC-W-X	Wood Top Tables Only - Any Size

### Replacement Casters

- 5" Heavy Duty Locking Casters For Round Legs
- Note: If "ST" Work Tables Are Ordered With Casters CAS01-R or CAS02-R, Table Legs Will Be Precut To Allow A Finished Working Height of 35-3/4". (Available For "ST" Tables Only)



Model #	Description
CAS01-R-X	Set of 4
CAS02-R-X	Set of 6

## Stallion Work Tables w/Adjustable Galvanized Legs & Lower Shelf NSF

- 16GA 300 Series Stainless Steel
  - Available In Flat Top or 5" High 1.5" Deep Clip-Down Riser
  - Stallion Edge, Straight Turndown on Sides
  - Galvanized Adjustable Lower Shelf
  - Galvanized Legs And Adj Metal Bullet Feet
  - Shipped Knocked-Down, Easy-To-Assemble
- Note: \* (Allow Up To 10 Days For Shipment)



### Flat Top Work Tables w/Lower Shelf

L x W	Model #
30" x 24"	ST6-2430GSK-X
36" x 24"	ST6-2436GSK-X
48" x 24"	ST6-2448GSK-X
60" x 24"	ST6-2460GSK-X
72" x 24"	ST6-2472GSK-X
84" x 24"	ST6-2484GSK-X *
96" x 24"	ST6-2496GSK-X
108" x 24"	ST6-24108GSK-X *
120" x 24"	ST6-24120GSK-X *
30" x 30"	ST6-3030GSK-X
36" x 30"	ST6-3036GSK-X
48" x 30"	ST6-3048GSK-X
60" x 30"	ST6-3060GSK-X
72" x 30"	ST6-3072GSK-X
84" x 30"	ST6-3084GSK-X *
96" x 30"	ST6-3096GSK-X
108" x 30"	ST6-30108GSK-X *
120" x 30"	ST6-30120GSK-X *
48" x 36"	ST6-3648GSK-X
60" x 36"	ST6-3660GSK-X
72" x 36"	ST6-3672GSK-X
84" x 36"	ST6-3684GSK-X
96" x 36"	ST6-3696GSK-X

### 5" Riser Top Work Tables w/Lower Shelf

L x W	Model #
30" x 24"	ST6R5-2430GSK-X
36" x 24"	ST6R5-2436GSK-X
48" x 24"	ST6R5-2448GSK-X
60" x 24"	ST6R5-2460GSK-X
72" x 24"	ST6R5-2472GSK-X
84" x 24"	ST6R5-2484GSK-X *
96" x 24"	ST6R5-2496GSK-X
108" x 24"	ST6R5-24108GSK-X *
120" x 24"	ST6R5-24120GSK-X *
24" x 30"	ST6R5-3024GSK-X
30" x 30"	ST6R5-3030GSK-X
36" x 30"	ST6R5-3036GSK-X
48" x 30"	ST6R5-3048GSK-X
60" x 30"	ST6R5-3060GSK-X
72" x 30"	ST6R5-3072GSK-X
84" x 30"	ST6R5-3084GSK-X *
96" x 30"	ST6R5-3096GSK-X
108" x 30"	ST6R5-30108GSK-X *
120" x 30"	ST6R5-30120GSK-X *

### Optional Stainless Steel Legs With 5" Locking Casters

- Finished Working Height Of 35-3/4"
- Note: For Adding Casters To Existing Work Tables In Field

Model #	Descriptions
SLEG-34.75C-4-X	Set of 4
SLEG-34.75C-6-X	Set of 6

## Stainless Steel Drawers

- 15" x 20" x 5"
- Stainless Steel Front Drawer And Pan
- Available In Poly Friction Slides or Stainless Steel Roller Bearings



### Poly Friction Slides

Model #	Descriptions
DP2015-S24-X	24" Wide Stainless Tables Only (Poly Friction Slides)
DP2015-S30-X	30" Wide Stainless Tables Only (Poly Friction Slides)
DP2015-S36-X	36" Wide Stainless Tables Only (Poly Friction Slides)
DP2015-W-X	Wood Top Tables Only - Any Size (Poly Friction Slides)

### Stainless Steel Roller Bearings

Model #	Descriptions
DR2015-S24-X	24" Wide Stainless Tables Only (Stainless Steel Roller Bearings)
DR2015-S30-X	30" Wide Stainless Tables Only (Stainless Steel Roller Bearings)
DR2015-S36-X	36" Wide Stainless Tables Only (Stainless Steel Roller Bearings)
DR2015-W-X	Wood Top Tables Only - Any Size (Stainless Steel Roller Bearings)



SMRF-ST-0620-NV

## Stallion Work Tables w/Adjustable Stainless Steel Bracing

- 16GA 300 Series Stainless Steel
  - Available In Flat Top or 5" High 1.5" Deep Clip-Down Riser
  - Stallion Edge, Straight Turndown on Sides
  - Stainless Steel Legs And Bracing w/ Metal Bullet Feet
  - Shipped Knocked-Down, Easy-To-Assemble
- Note: \* (Allow Up To 10 Days For Shipment)

ASSEMBLY VIDEO ONLINE  
YOUTUBE.COM/JOHNBOOSCO

### Flat Top Work Tables w/Stainless Bracing



ST6-3048SBK-X

L x W	Model #	L x W	Model #	L x W	Model #
30" x 24"	ST6-2430SBK-X	30" x 30"	ST6-3030SBK-X	48" x 36"	ST6-3648SBK-X
36" x 24"	ST6-2436SBK-X	36" x 30"	ST6-3036SBK-X	60" x 36"	ST6-3660SBK-X
48" x 24"	ST6-2448SBK-X	48" x 30"	ST6-3048SBK-X	72" x 36"	ST6-3672SBK-X
60" x 24"	ST6-2460SBK-X	60" x 30"	ST6-3060SBK-X	84" x 36"	ST6-3684SBK-X
72" x 24"	ST6-2472SBK-X	72" x 30"	ST6-3072SBK-X	96" x 36"	ST6-3696SBK-X
84" x 24"	ST6-2484SBK-X	84" x 30"	ST6-3084SBK-X		
96" x 24"	ST6-2496SBK-X	96" x 30"	ST6-3096SBK-X		
108" x 24"	ST6-24108SBK-X *	108" x 30"	ST6-30108SBK-X *		
120" x 24"	ST6-24120SBK-X *	120" x 30"	ST6-30120SBK-X *		

### 5" Riser Top Work Tables w/Stainless Bracing



ST6R5-3048SBK-X

L x W	Model #	L x W	Model #
30" x 24"	ST6R5-2430SBK-X	24" x 30"	ST6R5-3024SBK-X
36" x 24"	ST6R5-2436SBK-X	30" x 30"	ST6R5-3030SBK-X
48" x 24"	ST6R5-2448SBK-X	36" x 30"	ST6R5-3036SBK-X
60" x 24"	ST6R5-2460SBK-X	48" x 30"	ST6R5-3048SBK-X
72" x 24"	ST6R5-2472SBK-X	60" x 30"	ST6R5-3060SBK-X
84" x 24"	ST6R5-2484SBK-X	72" x 30"	ST6R5-3072SBK-X
96" x 24"	ST6R5-2496SBK-X	84" x 30"	ST6R5-3084SBK-X
108" x 24"	ST6R5-24108SBK-X *	96" x 30"	ST6R5-3096SBK-X
120" x 24"	ST6R5-24120SBK-X *	108" x 30"	ST6R5-30108SBK-X *
		120" x 30"	ST6R5-30120SBK-X *

### Optional Stainless Steel Legs With 5" Locking Casters

- Finished Working Height Of 35-3/4"
- Note: For Adding Casters To Existing Work Tables In Field

Model #	Desc.
SLEG-34.75C-4-X	Set of 4
SLEG-34.75C-6-X	Set of 6

## Filler Table With Drop-In Sink



DROP-IN SINK & FAUCET



EFT8-3015SSK-S-X

- 18GA Type 400 Stainless Steel Top
- 1-1/2" Turn Up Rear Riser
- Stallion Edge Front, Straight Turndown on Sides
- Stainless Steel Legs And Adjustable Undershelf
- Adjustable Bullet Feet
- Includes Drop-In Sink (10" x 14" x 5" Bowl Size)
- Includes Economy Faucet (PBF-4-D-LF-X)

Model #	L x W
EFT8-3015SSK-S-X	15" x 30"
EFT8-3018SSK-S-X	18" x 30"
EFT8-3024SSK-S-X	24" x 30"

## Riser Top Filler Tables 1.5" Turn Up w/Adjustable Undershelf



EFT8-3015-X

- 18GA 430 Series Stainless Steel
- Stallion Edge Both Faces, Straight Turn Down On Sides
- 1.5" Turned Up Rear Riser
- Adjustable Lower Shelf w/Plastic Bullet Feet
- Shipped Knocked-Down, Easy-To-Assemble

### Galvanized Legs And Shelf

Model #	L x W
EFT8-3012-X	12" x 30"
EFT8-3015-X	15" x 30"
EFT8-3018-X	18" x 30"
EFT8-3024-X	24" x 30"
EFT8-3612-X	12" x 36"
EFT8-3615-X	15" x 36"
EFT8-3618-X	18" x 36"
EFT8-3624-X	24" x 36"

### Stainless Steel Legs And Shelf

Model #	L x W
EFT8-3012SSK-X	12" x 30"
EFT8-3015SSK-X	15" x 30"
EFT8-3018SSK-X	18" x 30"
EFT8-3024SSK-X	24" x 30"
EFT8-3612SSK-X	12" x 36"
EFT8-3615SSK-X	15" x 36"
EFT8-3618SSK-X	18" x 36"
EFT8-3624SSK-X	24" x 36"

## Stallion Work Tables w/Adjustable Galvanized Steel Bracing

- 16GA 300 Series Stainless Steel
  - Available In Flat Top or 5" High 1.5" Deep Clip-Down Riser
  - Stallion Edge, Straight Turndown on Sides
  - Galvanized Legs And Bracing w/ Metal Bullet Feet
  - Shipped Knocked-Down, Easy-To-Assemble
- Note: \* (Allow Up To 10 Days For Shipment)



ST6-3048GBK-X



ST6R5-3048GBK-X

### Flat Top Work Tables w/Galvanized Bracing

L x W	Model #
30" x 24"	ST6-2430GBK-X
36" x 24"	ST6-2436GBK-X
48" x 24"	ST6-2448GBK-X
60" x 24"	ST6-2460GBK-X
72" x 24"	ST6-2472GBK-X
84" x 24"	ST6-2484GBK-X *
96" x 24"	ST6-2496GBK-X
108" x 24"	ST6-24108GBK-X *
120" x 24"	ST6-24120GBK-X *
30" x 30"	ST6-3030GBK-X
36" x 30"	ST6-3036GBK-X
48" x 30"	ST6-3048GBK-X
60" x 30"	ST6-3060GBK-X
72" x 30"	ST6-3072GBK-X
84" x 30"	ST6-3084GBK-X *
96" x 30"	ST6-3096GBK-X
108" x 30"	ST6-30108GBK-X *
120" x 30"	ST6-30120GBK-X *
48" x 36"	ST6-3648GBK-X
60" x 36"	ST6-3660GBK-X
72" x 36"	ST6-3672GBK-X
84" x 36"	ST6-3684GBK-X
96" x 36"	ST6-3696GBK-X

### 5" Riser Top Work Tables w/Galvanized Bracing

L x W	Model #
30" x 24"	ST6R5-2430GBK-X
36" x 24"	ST6R5-2436GBK-X
48" x 24"	ST6R5-2448GBK-X
60" x 24"	ST6R5-2460GBK-X
72" x 24"	ST6R5-2472GBK-X
84" x 24"	ST6R5-2484GBK-X *
96" x 24"	ST6R5-2496GBK-X
108" x 24"	ST6R5-24108GBK-X *
120" x 24"	ST6R5-24120GBK-X *
24" x 30"	ST6R5-3024GBK-X
30" x 30"	ST6R5-3030GBK-X
36" x 30"	ST6R5-3036GBK-X
48" x 30"	ST6R5-3048GBK-X
60" x 30"	ST6R5-3060GBK-X
72" x 30"	ST6R5-3072GBK-X
84" x 30"	ST6R5-3084GBK-X *
96" x 30"	ST6R5-3096GBK-X
108" x 30"	ST6R5-30108GBK-X *
120" x 30"	ST6R5-30120GBK-X *

## Equipment Stands -16GA

- 16GA Stainless Steel Top
- 18GA Adjustable Undershelf
- GALV or Stainless Steel Legs And Adj Bullet Feet
- 1.5" High Rear and Side Risers
- 24" Overall Height



GS6-3048SSK-X

L x W	Galvanized Legs	Stainless Steel Legs
15" x 30"	GS6-3015GSK-X	GS6-3015SSK-X
18" x 30"	GS6-3018GSK-X	GS6-3018SSK-X
24" x 30"	GS6-3024GSK-X	GS6-3024SSK-X
36" x 30"	GS6-3036GSK-X	GS6-3036SSK-X
48" x 30"	GS6-3048GSK-X	GS6-3048SSK-X
60" x 30"	GS6-3060GSK-X	GS6-3060SSK-X
72" x 30"	GS6-3072GSK-X	GS6-3072SSK-X

## Equipment Stands "E-Series" 18GA

- 18GA 430 Series Stainless Steel Top
- 18GA Adjustable Undershelf
- GALV or Stainless Steel Legs And Adj Bullet Feet
- 1.5" High Rear and Side Risers
- 24" Overall Height



EES8-3048-X

L x W	Galvanized Legs	Stainless Steel Legs
15" x 30"	EES8-3015-X	EES8-3015SSK-X
18" x 30"	EES8-3018-X	EES8-3018SSK-X
24" x 30"	EES8-3024-X	EES8-3024SSK-X
36" x 30"	EES8-3036-X	EES8-3036SSK-X
48" x 30"	EES8-3048-X	EES8-3048SSK-X
60" x 30"	EES8-3060-X	EES8-3060SSK-X
72" x 30"	EES8-3072-X	EES8-3072SSK-X

SMRFS-F0620-NV

## 1-3/4" Thick Maple Wood Top Bakers Table NSF

- 1-3/4" Thick Hard Rock Flat Maple Top w/Penetrating Oil Finish
- Adjustable Bullet Feet
- Shipped Knocked-Down, Easy-To-Assemble



SNS09-X

### Stainless Steel Legs & Adjustable Bracing

Model #	L x W
SNB08-X	48" x 30"
SNB09-X	60" x 30"
SNB10-X	72" x 30"
SNB11-X	96" x 30"
SNB16-X	72" x 36"



SNB09-X

### Stainless Steel Legs & Adjustable Lower Shelf

Model #	L x W
SNS08-X	48" x 30"
SNS09-X	60" x 30"
SNS10-X	72" x 30"
SNS11-X	96" x 30"
SNS13-X	36" x 36"

## 1-1/2" Thick Maple Wood Top Bakers Table NSF



JNS10-X

- 1-1/2" Thick Hard Rock Flat Maple Top w/Penetrating Oil Finish
- Adjustable Bullet Feet
- Shipped Knocked-Down, Easy-To-Assemble

### Galvanized Legs & Adjustable Lower Shelf

Model #	L x W
JNS09-X	48" x 30"
JNS10-X	60" x 30"
JNS11-X	72" x 30"
JNS13-X	96" x 30"

## Optional Stainless Steel Adjustable Lower Shelf NSF

- 18GA Type 400 Stainless Steel With #4 Polish, Satin Finish
- Knocked Down Setup
- Fits JNS & SNS Tables



NEW

Model #	L x W
ESSK8-3048-X	48" x 30"
ESSK8-3060-X	60" x 30"
ESSK8-3072-X	72" x 30"
ESSK8-3096-X	96" x 30"

## "SCT" Style Commercial Wood Tops 1-1/2" Thick Hard Rock Maple NSF

- 1-1/2" Thick - Northern Hard Rock Maple
- Penetrating Oil Finish Non-Reversible
- NSF Certified



Model #	Size (L x W x H)
SCT011-O-X	48" x 30" x 1-1/2"
SCT012-O-X	60" x 30" x 1-1/2"
SCT013-O-X	72" x 30" x 1-1/2"
SCT015-O-X	96" x 30" x 1-1/2"

## R-Board Collection Wood Cutting Boards NSF

- 1-1/2" Thick - Northern Hard Rock Maple
- Edge Grain Constructed
- Reversible With Hand Grips
- Boos Block Cream With Beeswax Finish
- Available in Case Packs Only
- NSF Certified



- Must be ordered in case pack quantities to avoid broken carton charge.
- All less than case pack orders will be subject to a \$3.00 broken carton charge.
- Only 1 broken carton charge per model number.

Model #	Units Per Pack	Size (L x W x H)
R01-X	6	18" x 12" x 1-1/2"
R02-X	3	24" x 18" x 1-1/2"
R03-X	6	20" x 15" x 1-1/2"

Note: All cutting board must follow map pricing regardless of current flyer pricing

## 3 Tiered Aluminum Keg Rack

- Aluminum Shelves Constructed Of 1-3/4" Square Tubing
- Aluminum Posts
- (2) Adjustable Keg Storage Racks
- (1) Adjustable Top Storage Shelf
- Shipped Knocked-Down

Model #	Size (L x W x H)
ALKR-2042-X	42" x 20" x 76"
ALKR-2060-X	60" x 20" x 76"

## Optional Rear Keg Strap

- Aluminum Constructed Of 1-3/4" Square Tubing
- Prevents Kegs From Sliding Off The Rear Keg Rack

Model #	L x W
ALKRS-2042-X	42" x 20"
ALKRS-2060-X	60" x 20"



ALKR-2042-X



Optional Rear Keg Strap



ALKRS-2042-X

## Mobile Pan Racks (Front & Side Load)

- 6063 Aluminum Construction
- 1" Square Tube Frame With Bolted Cross Bracing
- 3" Pan Spacing/20 Pan Capacity
- 5" Non-Locking Casters



NESTING RACKS

### Standard Mobile Pan Rack

Model #	Description	Size (L x W x H)
ABPR-1820-3KD-X	Front Load	26" x 20-1/2" x 69"
ABPR-1820-PC-X	Clear Plastic Zippered Cover (Front Load Only)	28" x 23" x 61"
ABPR-1820-3KDS-X	Side Load	29-1/2" x 19-1/2" x 69"

### Rounded Top Mobile Pan Rack

Model #	Description	Size (L x W x H)
ABPR-1820-RKD-X	Front Load	26" x 20-1/2" x 69"
ABPR-1820-RKDS-X	Side Load	29-1/2" x 19-1/2" x 69-3/4"

### Nesting Mobile Pan Rack (Set-Up)

Model #	Description	Size (L x W x H)
ABPR-1820-ZN-X	Front Load	26" x 20-1/2" x 69"
ABPR-1820-ZNS-X	Side Load	29-1/2" x 19-1/2" x 71"

ABPR-1820-3KD-X    ABPR-1820-RKD-X    ABPR-1820-ZN-X



ABPR-1820-3KDS-X    ABPR-1820-RKDS-X    ABPR-1820-ZNS-X



## Sheet Pan Dollies

- Aluminum Construction
- 5" Plate Casters
- Push Handle
- Sheet Pans Not Included



Model #	L x W
D1927-SP-H-X	27" x 19"

## Aluminum Dunnage Rack

- 6065 Aluminum Construction
- 1.5" Square Tube Frame
- 1,500 lbs Weight Capacity



Model #	L x W x H
ALJB362012-X	36" x 20" x 12"
ALJB362412-X	36" x 24" x 12"
ALJB482012-X	48" x 20" x 12"
ALJB482412-X	48" x 24" x 12"
ALJB602012-X	60" x 20" x 12"
ALJB602412-X	60" x 24" x 12"



SMRFS-0620-NV

## 18GA 300 - Wall Shelves - 1.5" Rear High Riser NSF

- 18GA 300 Series Stainless Steel
- 1.5" Rear High Riser
- 6', 7', And 8' Wall Shelves Standard w/3 Support Brackets



Model #	L x W
BHS1224-X	24" x 12"
BHS1236-X	36" x 12"
BHS1248-X	48" x 12"
BHS1260-X	60" x 12"
BHS1272-X	72" x 12"
BHS1284-X	84" x 12"
BHS1296-X	96" x 12"
BHS1624-X	24" x 16"
BHS1636-X	36" x 16"
BHS1648-X	48" x 16"
BHS1660-X	60" x 16"
BHS1672-X	72" x 16"
BHS1684-X	84" x 16"
BHS1696-X	96" x 16"

## 18GA 430 - Wall Shelves - 1.5" Rear High Riser

- 18GA 430 Series Stainless Steel
- 1.5" Rear High Riser
- 6', 7', And 8' Wall Shelves Standard w/3 Support Brackets



Model #	L x W
BHS1224-X	24" x 12"
BHS1236-X	36" x 12"
BHS1248-X	48" x 12"
BHS1260-X	60" x 12"
BHS1272-X	72" x 12"
BHS1284-X	84" x 12"
BHS1296-X	96" x 12"
BHS1624-X	24" x 16"
BHS1636-X	36" x 16"
BHS1648-X	48" x 16"
BHS1660-X	60" x 16"
BHS1672-X	72" x 16"
BHS1684-X	84" x 16"
BHS1696-X	96" x 16"

## Microwave Shelves NSF Inverted "V" Front Edge

- 16GA 300 Series Stainless Steel
- Inverted "V" Front Edge
- Electric Cord Cut-Out With Rubber Grommet



Model #	L x W
BMS2024-X	24" x 20"
BMS2030-X	30" x 20"

## Tubular Wall Shelves NSF

- 16 GA 300 Series Stainless Steel
- 1-5/8" Tubing
- Includes Brackets



Model #	L x W
BHS1624-T-X	24" X 16"
BHS1636-T-X	36" X 16"
BHS1648-T-X	48" X 16"
BHS1660-T-X	60" X 16"
BHS1672-T-X	72" X 16"

## Wall Shelves 1.5" Rear High Riser w/Single Bar Pot Rack NSF

- 18GA 300 Series Stainless Steel
- 1.5" Rear High Riser
- 6', 7', And 8' Wall Shelves Standard w/3 Support Brackets



Model #	L x W
BHS1236PR-X	36" x 12"
BHS1248PR-X	48" x 12"
BHS1260PR-X	60" x 12"
BHS1272PR-X	72" x 12"

## Mop Broom Holder NEW

- Stainless Steel
- (3) Rubber Cam Grips

Model #	L x H
PB-MH-3-X	26" x 3"



## Caution: Freight Claims

Before accepting any shipment, examine it carefully and note any damage or shortage on the Freight Bill before signing for delivery. All claims for shortage or damage must be filed with the carrier. Title passes from John Boos & Co. to the purchaser at point of origin of shipment. If, after receipt of shipment, concealed damage is discovered, immediately notify the delivering carrier requesting immediate inspection. The inspection report should be used to support your claims against the carrier.

## Return Shipments

We will not accept any returned merchandise unless written authorization has been issued. Any claims for defective materials or workmanship should be emailed to factory.

For return of UNUSED merchandise in A-1 condition - there is a 25% or greater restocking charge for AUTHORIZED returns. John Boos & Co. reserves the right to deny returned merchandise.

## Warranty

The only warranty, expressed or implied, is a 1-year guarantee against defect in workmanship and material.

This warranty does not apply to damages which may result from neglect, accidental or intentional damaged, damage or wear to any swivel mechanism, normal wear and tear, misuse of product, unauthorized repair, exposure to extremes in temperature and humidity, and alteration or abuse of the product. Wood products ordered "unfinished" do not come with a warranty.

Factory obligation under this warranty, is limited, at the option of John Boos & Co. to repair or replacement of the product (or one of equal type and quality if the product is no longer available), within 90 days after the receipt of written recommendation from the dealer, provided none of the above exceptions are evident.

John Boos & Co. shall not be liable for any loss or damage arising from use, or for consequential damages. This warranty gives certain legal rights and there may be other rights that vary from state to state.

## Freight Program

- Free Freight for WESTERN REGION FOODSERVICE EQUIPMENT FLYER items on order of \$3,500 net or more, applies to shipment to these states only: Arizona, California, Colorado, Idaho, Montana, Nevada, New Mexico, Oregon, Utah, Washington, Wyoming.
- Free Freight for \$3,500.00 orders from the WESTERN REGION FOODSERVICE FLYER only. No combination from any other flyer.
- Shipping from FOB Sparks, Nevada.
- 24 hours for concealed damage - retain original package
- Price F.O.B. Factory
- Product subject to item availability
- 2-3 week lead time for fabricated product not in inventory on standard work tables and dish tables (E-Series not included)
- Flyer subject to change without notice
- No modifications to flyer product
- All Prices Dealer Net



Connect With Us!



970 Meredith Way  
Sparks, NV 89431  
www.johnboos.com  
Ph: 888-431-2667 Fax: 800-433-2667  
**CHANGE SERVICE REQUESTED**

## Mobile Hand Wash Sink

John Boos Mobile Hand Wash Station is custom fabricated in the USA and provides a clean, hot and cold water source to any desired location. Constructed with 16GA stainless steel top and 18GA panels, this wash station is durable and easy to clean. All components are UL Listed and have gone through rigorous testing, inspections, and validation. Ideal for foodservice, catering, schools, medical facilities and much more.

- 16GA Stainless Steel Top
- 18GA Stainless Steel Panels
- 20GA Stainless Steel Hinged Door w/Magnetic Catches
- Marine Inverted "V" Front Edge
- 8" Rear Risers & Side Splashes
- Drop-In Sink
- Deck Mount Faucet 4" O.C.
- Soap and Paper Towel Dispenser
- Heavy Duty 5" Locking Casters
- Fresh Water Pump
- 2.5 GAL Water Heater
- CPS 5 GAL Clean Water Container
- CPS 6 GAL Grey Water Container
- GFI Outlet With 6 Foot Cord
- All Components are UL Listed



**NEW PRODUCTS**

Model #	Sink Bowl Size (L x W D)	L x W	Overall Work Height
MHS-2624-X	10" x 14" x 5"	26" x 24"	36"