

Blend

Non-Refrigerated Self-Service End Cap

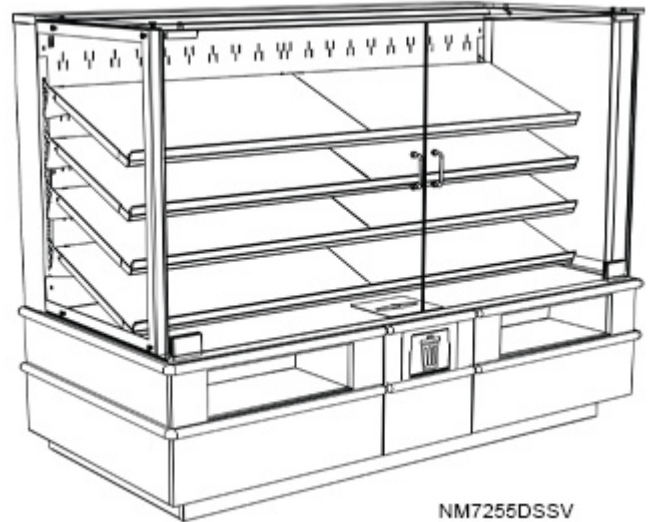
Structural Concepts®

• NM7255DSSV

72"L x 35-1/4"D x 54-5/8"H

Included

- Adjustable, locking casters
- LED top & shelf lights
- One year parts & labor warranty
- Straight base w/ box storage, tissue holder, & waste bin
- Vertical front glass



Specify	Standard Features	Additional Options
INTERIOR COLOR	• Black powder coated	• Stainless steel
LOWER CLADDING	• Powder coated (stock colors, specify RAL#)	• Laminated (non-premium) Confirm pattern/grain direction • Stainless steel
LOWER FRONT PANEL COLOR	• Black powder coated	• Stainless steel
UPPER EXTERIOR COLOR	• Powder coated (stock colors, specify RAL#)	• Stainless steel
BUMPER	• 1" Boston bumper (specify color)	• 1" Stainless steel plate rail bumper • None
FRONT DOORS	• Clear glass swinging doors w/o lock	
UPPER LEFT PANEL	• Clear glass	
UPPER RIGHT PANEL	• Clear glass	
PRICE TAG MOLDING	• None	• 1" Price tag molding (black or silver)
SHELVING	• (4) Levels solid, adjustable shelving	
LIGHTS	• LED 3500K w/ frosted lens	• LED 4000K w/ frosted lens
ELECTRICAL CONNECT	• Electrical leads	• 6' Straight blade power cord
ACCESSORIES		• 9" x 18" Trays

Blend

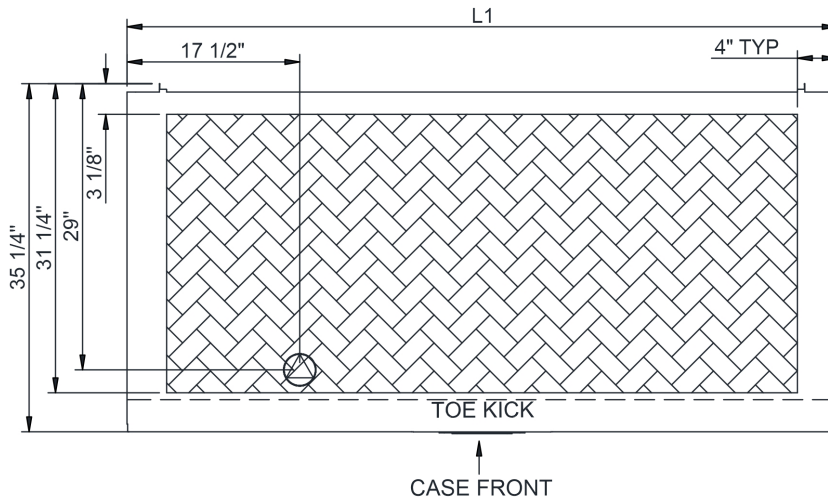
Non-Refrigerated Self-Service End Cap

Structural Concepts®

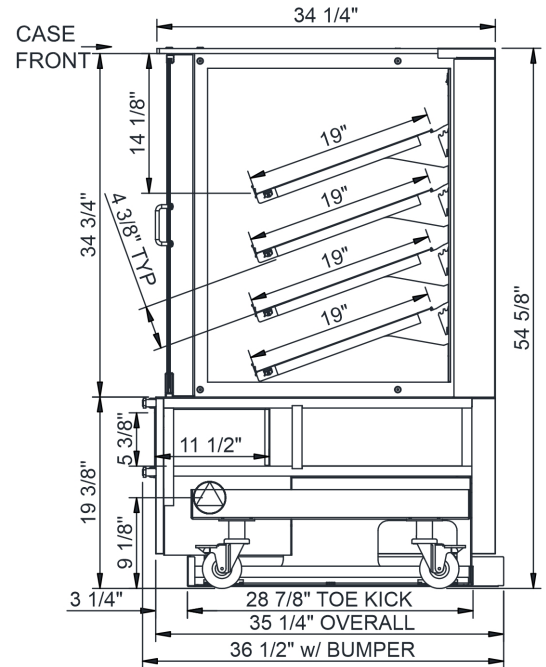
Intended Environment: Type II - Designed to operate in ambient conditions of 80°F and 60% relative humidity unless noted otherwise in system information below.

Zone	Intended Product To Be Displayed	Warmest Avg Prod Temp ° F
1	Packaged non-refrigerated products	Ambient

PLAN VIEW



SIDE VIEW



NOTE: ALL DIMENSIONS APPROXIMATE

⊗ ELECTRICAL JUNCTION BOX
(SUPPLIED WITH 6" LEADS OR POWER CORD).
⊙ LOCATION OF DRAIN TUBE FOR REMOTE REF.
ONLY (SUPPLIED WITH 3/4" OR 1 1/2" PVC TUBE).

⊕ REFRIGERATION LINE CONNECTION.
⊞ REMOTE FLOOR SINK & UTILITIES
ACCESS AREA.

⊞ SELF-CONTAINED CASE SERVICE ACCESS AREA.
⊞ DRY CASE SERVICE ACCESS AREA.

Model Technical Specifications																	
Model	L"	L1"	L2"	System Circuit Volts			Phs	Freq	Amps ***	Watts	Wires	NEMA Plug	SST	Conv. Rack BTU/H	Para. Rack BTU/H	Est Wt	
NM7255DSSV	N/A	72.00	.00	Ambient/Lights (N/A)		Circuit #1	110-120	1	60	0.70	35	2+G	5-15P or L5-15P	N/A	N/A	N/A	N/A

*** Does not include electric defrost on freezer models.

Regulatory Approvals:

All Models ETL Listed to UL 65
ETL Sanitation to NSF/ANSI 2



Important Notes:

- 1) ELECTRICAL NOTE: If GFCI is required, a GFCI breaker MUST be used in lieu of a GFCI receptacle.
- 2) Remove tool free front panel to fit through 36" door.
- 3) Glass warranty only applicable to first point of delivery.

⚠ WARNING: This product can expose you to chemicals, including Urethane (Ethyl Carbamate), which are known to the State of California to cause cancer and birth defects or other reproductive harm. For more information go to www.P65Warnings.ca.gov.

Note: Information is subject to change at any time. Visit www.structuralconcepts.com for the most current specs.

21782442

Revised 2-22-2022