



SPECIFICATION SHEET

Model #:	Qty:
Project #:	
Consultant:	

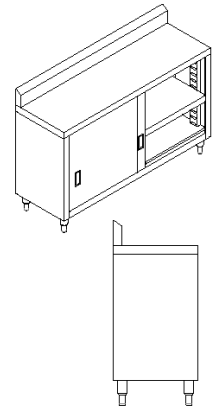
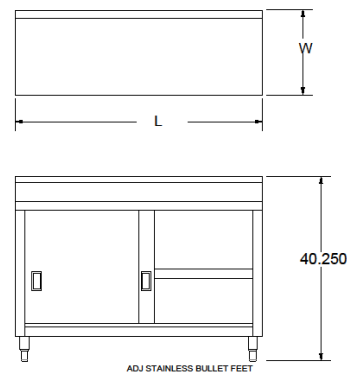
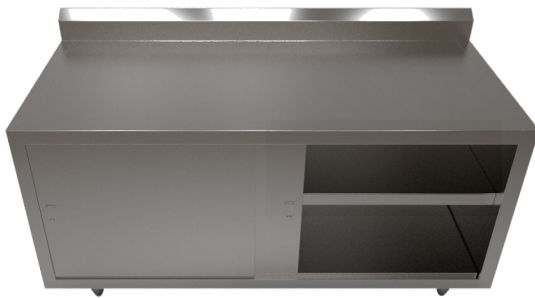
QUALITY FOOD SERVICE EQUIPMENT

PREMIUM WORK TABLES



DIMENSIONS

enclosed base - 5" backsplash - sliding doors



MATERIAL

- ◆ 14GA 304 stainless steel top
- ◆ 18GA stainless steel body
- ◆ Stainless steel panels on sides & rear
- ◆ Stainless steel lower shelf
- ◆ Stainless steel legs
- ◆ Stainless steel bullet feet

FEATURES

- ◆ Enclosed cabinet base
- ◆ 2 sliding doors
- ◆ Enclosed with panels on sides & rear
- ◆ Adjustable lower shelf
- ◆ Adjustable legs
- ◆ Adjustable bullet feet

Model#	Length	Width
TCB-2448R5S	48"	24"
TCB-2460R5S	60"	24"
TCB-2472R5S	72"	24"
TCB-3048R5S	48"	30"
TCB-3060R5S	60"	30"
TCB-3072R5S	72"	30"

(609) 642-8389 | sales@nbrequipment.com | www.nbrequipment.com