



**John
BOOS**
Since 1887

ITEM #: _____ QTY: _____
 MODEL #: _____
 PROJECT NAME: _____

110420

3601 S. Banker St. Effingham, IL 62401 • P.O. BOX 609 • Ph: (888) 431-2667 • Fax: (800) 433-2667



"SNS" MAPLE TOP WORK TABLES

1-3/4" THICK HARD ROCK MAPLE FLAT TOP W/ STAINLESS STEEL BASE & ADJUSTABLE UNDERSHELF

FEATURES:

- 1-3/4" THICK HARD MAPLE TOP, STYLE "SC" FLAT TOP
- MAPLE TOP W/ OIL FINISH W/ OPTIONAL VARNIQUE FINISH
- STAINLESS STEEL BASE AND UNDERSHELF
- UNDERSHELF IS ADJUSTABLE
- ADJUSTABLE BULLET FEET
- SHIPPED KNOCKED-DOWN, EASY-TO-ASSEMBLE
- ALL MODELS ARE NSF CERTIFIED

MATERIAL:

- TOP: NORTHERN HARD ROCK MAPLE
- LEGS: 1-5/8" ROUND O.D. 16 GAUGE TYPE 300 TUBULAR STAINLESS STEEL W/ #4 POLISH, SATIN FINISH
- SHELF: 18 GAUGE TYPE 300 TUBULAR STAINLESS STEEL W/#4 POLISH, SATIN FINISH
- GUSSETS: STAINLESS STEEL
- FEET: 1" ADJUSTABLE STAINLESS STEEL

OPTIONAL ACCESSORIES

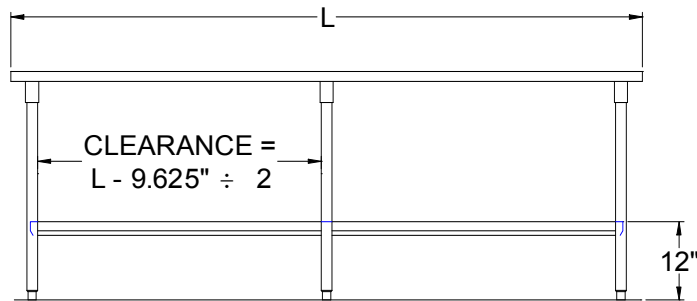
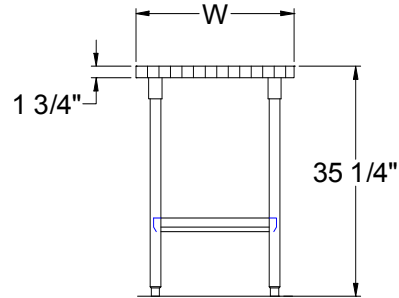
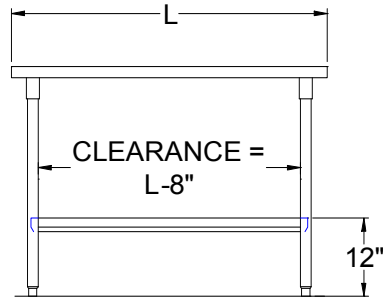
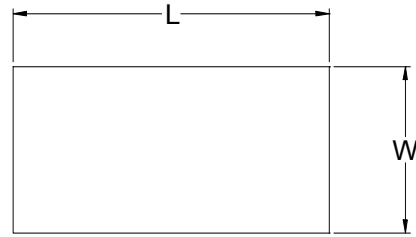
DESCRIPTION	MODEL	QTY
STAINLESS STEEL FEET		
DRAWER		
DRAWER LOCK		
ADJUSTABLE SHELF		
CASTERS		
OVERSHELVES		
POT RACK		



MAPLE TOP WORK TABLES

18" WIDE	QTY	24" WIDE	QTY	30" WIDE	QTY	36" WIDE	QTY
SNS1836		SNS01		SNS07		SNS13	
SNS1848		SNS02		SNS08		SNS14	
SNS1860		SNS03		SNS09		SNS15	
SNS1872		SNS04		SNS10		SNS16	
SNS1884		SNS04A		SNS10A		SNS16A	
SNS1896		SNS05		SNS11		SNS17	
-		SNS05A		SNS11A		SNS17A	
-		SNS06		SNS12		SNS18	

DETAILED SPECIFICATIONS



- UNITS 7 FT. AND LARGER ARE FURNISHED WITH SIX LEGS.
- FINISHED SIZE OF UNDERSHELF.
 SHELF LENGTH = LENGTH MINUS 4.875"
 SHELF WIDTH = WIDTH MINUS 4.25".

MAPLE TOP WORK TABLES

LENGTH	18" WIDE	WT. (LBS)	24" WIDE	WT. (LBS)	30" WIDE	WT. (LBS)	36" WIDE	WT. (LBS)
36"	SNS1836	60	SNS01	77	SNS07	90	SNS13	102
48"	SNS1848	72	SNS02	95	SNS08	116	SNS14	132
60"	SNS1860	88	SNS03	114	SNS09	140	SNS15	159
72"	SNS1872	102	SNS04	138	SNS10	164	SNS16	187
84"	SNS1884	119	SNS04A	162	SNS10A	198	SNS16A	225
96"	SNS1896	134	SNS05	186	SNS11	223	SNS17	254
108"	-		SNS05A	200	SNS11A	244	SNS17A	278
120"	-		SNS06	220	SNS12	268	SNS18	306

SOME UNITS SHIP UNASSEMBLED FOR REDUCED SHIPPING COST. ALL DIMENSIONS ARE TYPICAL. TOLERANCE +/- .500"

John Boos & Co. is constantly engaged in a program of improving products and therefore reserves the right to change specifications without prior notice.

