

TECHNICAL DATA

Dimensions

| | |
|------------------------------|-------------------------|
| Exterior Dimensions (WxDxH) | 49.5" x 26.75" x 34.25" |
| Interior Dimensions (WxDxH) | 45.5" x 23" x 26.5" |
| Net Volume (cu. ft.) | |
| Gross Weight | 230lbs |
| Packaging Dimensions (WxDxH) | 56" x 33" x 42" |
| Electrical Cord Length | |
| Capacity | 13.5 cu. ft. |
| Capacity 8" Mugs | 250 |
| Capacity 10" Steins | 240 |

Construction

| | |
|---------------------|---------------------|
| Exterior Material | Stainless Steel Top |
| Interior Material | Coated Aluminum |
| Insulation Material | |
| Shelf Material | Coated Steel |
| Shelf Load Capacity | |

Cooling

| | |
|------------------------|------------|
| Temperature Range | -5° - 2° F |
| Refrigerant | R290 |
| Maximum Ambient Temp | 90° F |
| Maximum Humidity | 65% |
| Defrosting | Automatic |
| Cooling System | |
| Temperature Display | |
| Temperature Controller | Electronic |
| H/P | 1/4+ |

Electrical

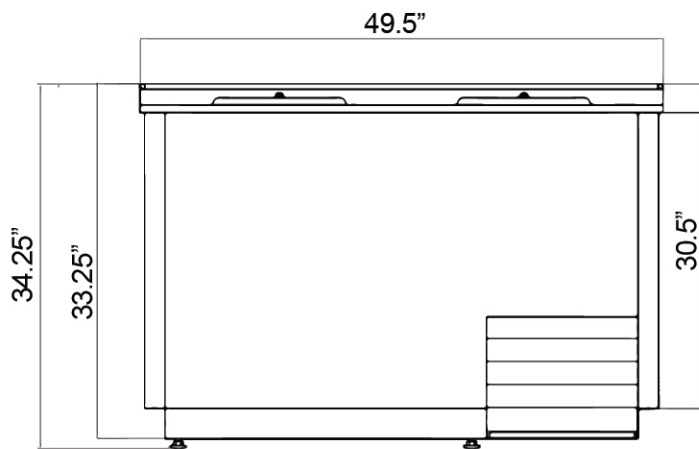
| | |
|---------|----------|
| Voltage | 115/60/1 |
| Amps | 3 |

PLAN VIEW

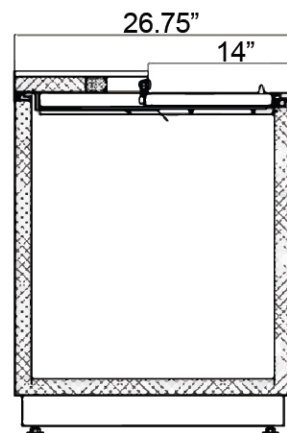


Intertek

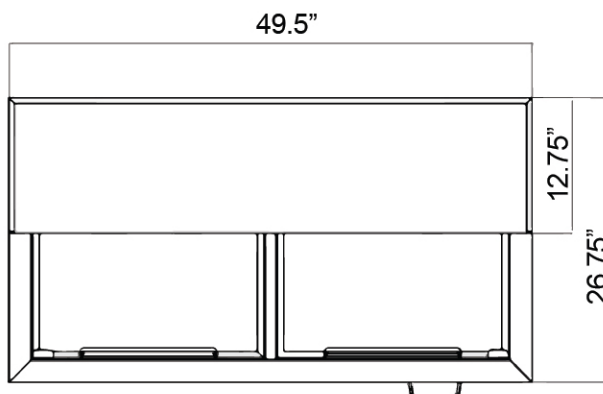
COMPLIES WITH ANSI/NSF 7
FOR FOOD SERVICE



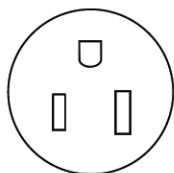
Front View



Side View

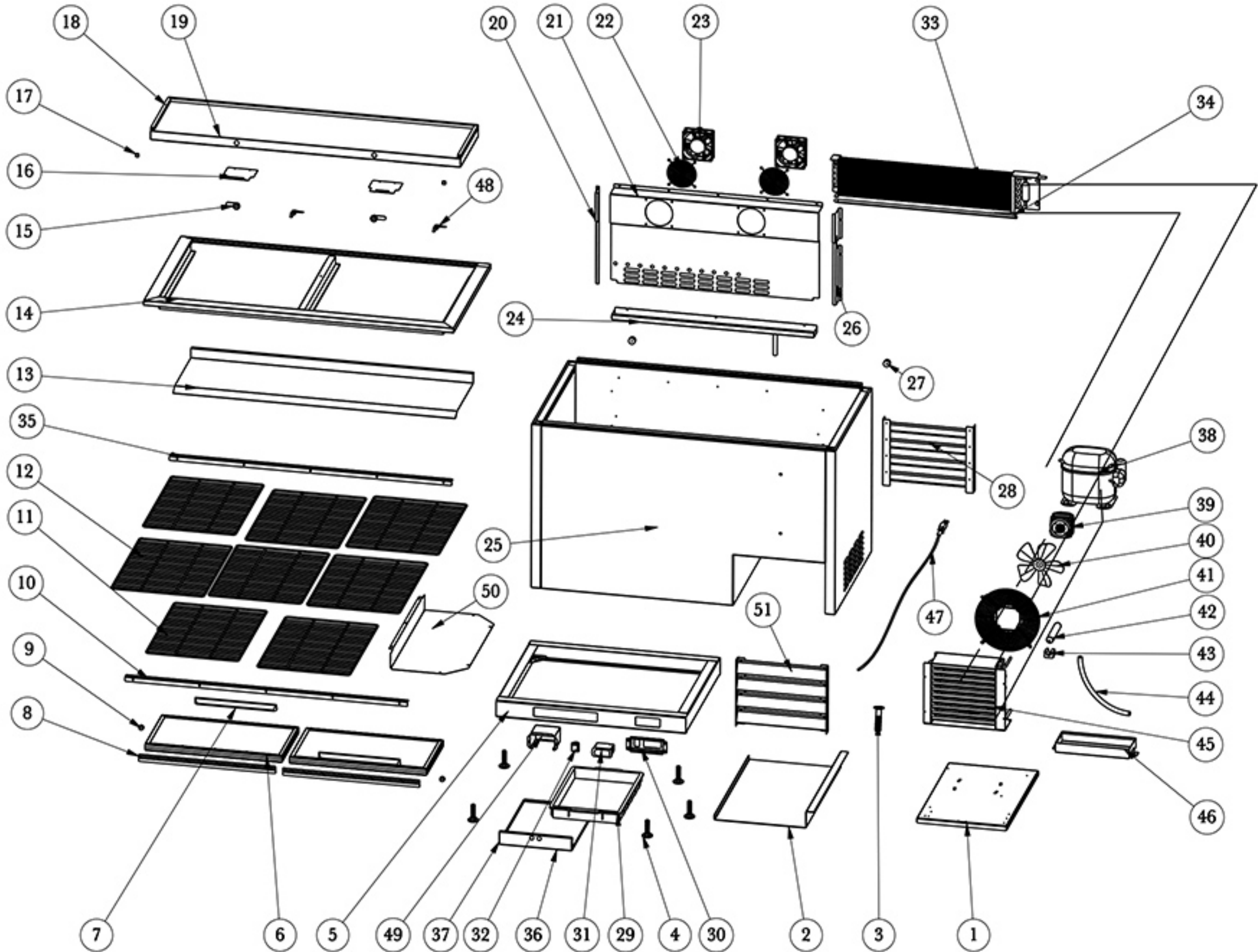


Top View



NEMA 5-15P

SGBF-50



| NO. | Part Name | Factory Part NO. | QTY |
|-----|------------------------------------|------------------|-----|
| 1 | COMPRESSOR UNIT INSTALLATION BOARD | | 1 |
| 2 | BASE BOARD | | 1 |
| 3 | INNER DRAIN PIPE | 15810020901 | 1 |
| 4 | LEVELING FEET | 12534030002 | 5 |
| 5 | CABINET BASE | | 1 |
| 6 | DOOR | | 2 |
| 7 | DOOR HANDLE | 16337030002 | 2 |
| 8 | DOOR GASKET | | 2 |
| 9 | DOOR LIMIT BLOCK | | 2 |
| 10 | SHELF RAIL 1 | | 1 |
| 11 | BOTTOM SHELF | 12502012885 | 2 |
| 12 | UPPER SHELF | 12502012884 | 6 |
| 13 | PANEL UNDER TABLE | | 1 |
| 14 | UNDER TABLE COMPONENT | | 1 |
| 15 | LOCK | 12546100952 | 2 |
| 16 | BASE BOARD FOR LOCK | | 2 |
| 17 | DECORATION COVER | 16351040001 | 2 |
| 18 | DECORATION STRIP | | 1 |
| 19 | TOP BOARD | | 2 |
| 20 | LEFT SUPPORT FOR EVAPORATOR COVER | | 1 |
| 21 | EVAPORATOR COVER | | 1 |
| 22 | EVAPORATOR FAN MOTOR COVER | 12504050115 | 2 |
| 23 | EVAPORATOR FAN MOTOR | 1003001114715 | 2 |
| 24 | INNER DRAIN PAN | | 1 |
| 25 | CABINET | | 1 |
| 26 | RIGHT SUPPORT FOR EVAPORATOR COVER | | 1 |
| 27 | BACK LIMIT BLOCK | 16363120001 | 2 |
| 28 | BACK GRILL | | 1 |
| 29 | DRAIN PAN | 16369690034 | 1 |
| 30 | THERMOSTAT INSTALLATION COVER | | 1 |
| 31 | THERMOSTAT | 17505120003 | 1 |
| 32 | POWER SWITCH | 17749211297 | 1 |
| 33 | EVAPORATOR | 17402060700 | 1 |
| 34 | DEFROST HEATER | 17738230021 | 1 |
| 35 | SHELF RAIL 2 | | 2 |
| 36 | BORAD FOR DRAIN PAN | | 1 |
| 37 | RAIL FOR DRAIN PAN BOARD | | 2 |
| 38 | COMPRESSOR | 17202163125 | 1 |
| 39 | CONDENSER FAN MOTOR | 22752520004 | 1 |

| | | | |
|----|------------------------------|-------------|---|
| 40 | CONDENSER FAN BLADE | 16381738122 | 1 |
| 41 | CONDENSER FAN MOTOR COVER | 22726010003 | 1 |
| 42 | FILTER | 17111250196 | 1 |
| 43 | FILTER FIXER | 16357020026 | 1 |
| 44 | DRAIN TUBE | 15818180020 | 1 |
| 45 | CONDENSER | 17303100261 | 1 |
| 46 | OUTER DRAIN PAN | | 1 |
| 47 | POWER CORD | 17664640048 | 1 |
| 48 | KEY | 12546310002 | 2 |
| 49 | THERMOSTAT WATER PROOF COVER | 16351170004 | 1 |
| 50 | THERMOSTAT BAFFLE | | 1 |
| 51 | FRONT GRILL | | 1 |