



Your Solutions Partner

# Specifications

F.O.B. Sedalia, Missouri 65301



Model: AHC-5M

### OPTIONS:

- 8" deep cold pan
- Ice Cooled
- Stainless steel legs
- Condinsate evaporator
- Designer food guards
- EconoMate Style sneeze guards
- Enclosed storage
- Florescent light beneath buffet shelf
- Veneer plastic laminate panels on body
- Kickplates
- Trayslides
- Drop brackets on tray slides
- False bottom-perforated stainless
- Wood caving boards
- Stainless steel carving boards

**Approval Stamp(s):**

### PRODUCT INFORMATION:

PROJECT: \_\_\_\_\_

ITEM: \_\_\_\_\_

QUANTITY: \_\_\_\_\_

MODEL:

### Duke - Salad Bars

#### Mechanically Ice Assist

- AHC-5M      74" L Cold Pan
- AHC-6M      88" L Cold Pan

### Top:

- 20 Ga. 300 Series stainless steel
- Edges flanged down into stainless steel liner

### Body:

- Fully enclosed
  - Paint Grip or
  - Stainless Steel
- Choice of (12) powder coat colors
- Reinforced as required
- 5" Diameter, NSF approved polyurethane casters

### Mechanically Assit Ice Pan:

- Heavy guage stainless steel
- 5" deep X 19-7/8" front to back
- 2" styrene insulation on ends
- Drain plug, ball valve and hose

### Refrigeration:

- R448a refrigerant
- Condensing unit, 120 volt, single phase
- Controls, electric cord and plug
- Removable stainless steel louvered grille for compressor compartment

### Agency Listings:



UL/ANSI NSF7

DUKE MANUFACTURING CO.

2305 N. Broadway

St. Louis, MO 63102

800.735.3853 Toll Free

314.231.5074 Fax

www.dukemfg.com

SS-1157 Duke Salad Bar Mech Ice Asst

Specification subject to change



DUKE SALAD BARS - STANDARD MECHANICALLY ICE ASSISTED

Catalog No. DSB-SALAD

A.I.A. File No. 35-C-13

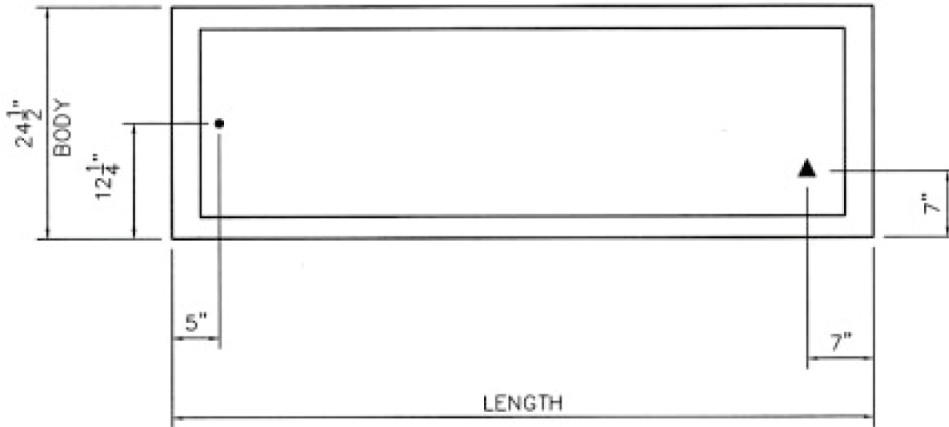
REV B 02/18/2020

# Salad Bars

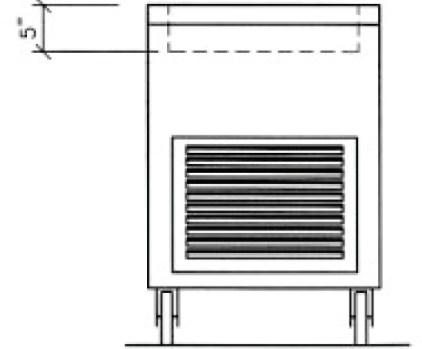
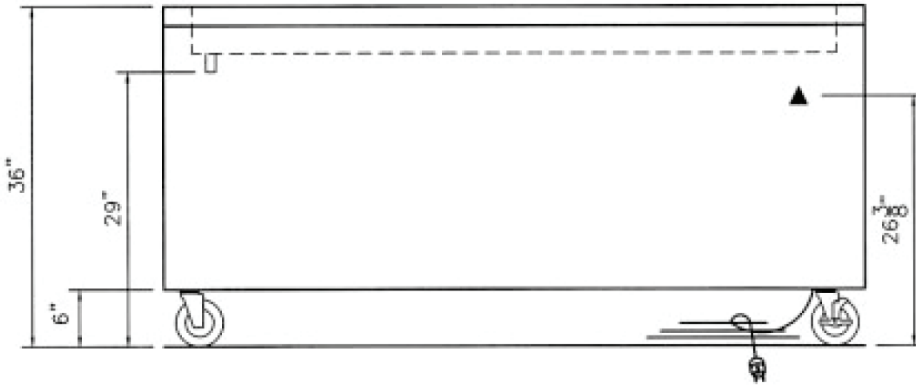
A.I.A. File No. 35-C-13

Catalog No. DSB-SALAD

DUKE SALAD BARS - STANDARD MECHANICALLY ICE ASSISTED



Legend	
▲	- Electrical Connection
●	- Drain Connection



**DIMENSIONS:**

Freight Class: 100

Model	Length		Width		Height		Cold Pan Size						Cube ft. crated	Crated Ship Weight	
	in.	cm	in.	cm	in.	cm	L		W		D			lbs.	kg
							in.	cm	in.	cm	in.	cm			
AHC-5M	74	188.0	24.5	62.2	36	91.4	68	172.7	19.9	50.5	5.0	12.7	42.0	500	227.3
AHC-6M	88	223.5	24.5	62.2	36	91.4	82	208.3	19.9	50.5	5.0	12.7	49.8	580	263.6

**ELECTRICAL SPECIFICATIONS:**

Model	Condensing Unit		
	Amps	Volts	NEMA
AHC-5M	5.15	120	5-15
AHC-6M	5.15	120	5-15

Condensate Evaporator option adds 300 Watts

This product may be covered by one or more patents or pending patent applications. For more details, see [www.dukemfg.com/patents](http://www.dukemfg.com/patents)



**Duke Manufacturing Co.**  
2305 N. Broadway  
St. Louis, MO 63102

Phone: 314-231-1130  
Toll Free: 1-800-735-3853  
Fax: 314-231-5074

[www.dukemfg.com](http://www.dukemfg.com)

Printed in U.S.A  
© 2019, Duke Manufacturing Co.