



ROYAL SERIES UNDERBAR FOUR COMPARTMENT BAR SINKS

MODEL: _____ PROJECT: _____ ITEM #: _____ QTY: _____

PRODUCT IMAGE



KR18-64C SHOWN

AVAILABLE IN 1800 or 2100 SERIES

OPTIONAL ACCESSORIES

- **KR-402** Faucet Install Kit
- **KR-301** Right End Return (Corner)
- **KR-302** Left End Return (Corner)
- **KR-310** Right End Splash
- **KR-311** Left End Splash
- **KR-401** Cap Catcher and Opener
- **KR-501** Towel Ring
- **30-160** Perforated Dump Basket
- **KR-806** Upgrade: 6" Longer Stainless Steel Legs
- **RS-"XX"** Sound Deadened Single Speedrail ("XX" indicates size)
- **RD-"XX"** Sound Deadened Double Speedrail ("XX" indicates size)

STANDARD FEATURES

- **Sink Bowl**
20 gauge stainless steel. 10" x 14" x 10" deep sink bowl.
Furnished with 1 1/2" IPS rear corner drain and 7 1/2" overflow pipe
- **Drainboard**
20 gauge stainless steel reinforced with welded braces every 6"
- **Front Apron**
20 gauge stainless steel clad over 20 gauge galvanized steel
- **Sides**
20 gauge stainless steel
- **Backsplash**
20 gauge stainless steel
- **Back and Bottom**
20 gauge galvanized steel
- **Legs**
1 5/8" tubular 16 gauge stainless steel with grey plastic bullet foot
- **Plumbing**
Hot/Cold Water: 1/2" IPS
Drain: 1 1/2" IPS
- **Faucet**
4" OC wall or deck mount faucet with double jointed spout and ceramic cartridge valves
- **Low Lead Compliance**
Low Lead Compliant faucets meet California AB-1953 and Vermont S152 standards



CERTIFICATIONS:

APPROVED BY:

Due to our commitment to continued product improvement, specifications are subject to change without notice.

Printed in the USA

Krowne Metal Corporation

100 Haul Rd. Wayne, NJ 07470 • Toll Free: (800) 631-0442 • Fax: (973) 872-1129
sales@krowne.com • www.krowne.com • www.facebook.com/KrowneMetal • www.twitter.com/KrowneMetal

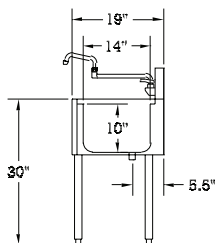
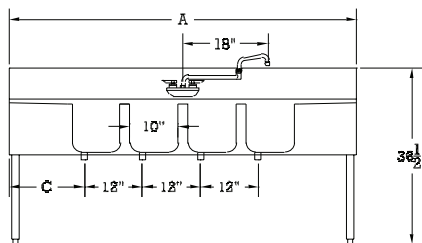
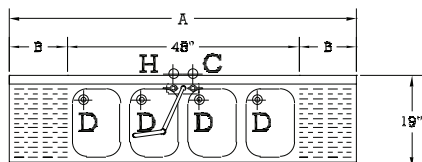
Rev. 4/2016
No. 5.13



ROYAL SERIES UNDERBAR FOUR COMPARTMENT BAR SINKS

MODEL: _____ PROJECT: _____ ITEM #: _____ QTY: _____

1800 SERIES

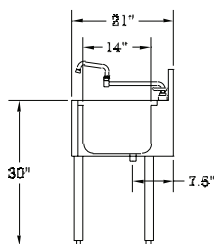
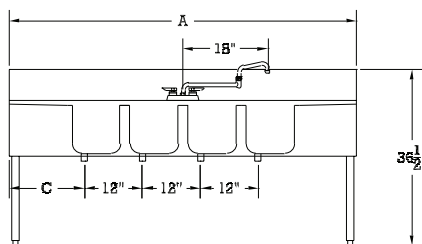
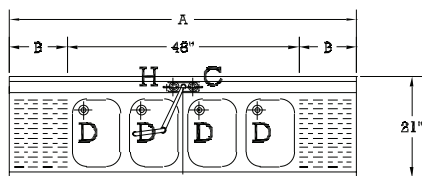


Model Numbers	Overall Length Ⓐ	Drainboard Ⓑ	Left Side to Drain Ⓒ	Bowl Location	Weight (lbs.)
KR18-44C	4'-0"	N/A	4"	Center	115
KR18-64C	6'-0"	12" Each	15"	Center	140
KR18-74C	7'-0"	18" Each	21"	Center	155
KR18-84C	8'-0"	24" Each	27"	Center	190

NOTE: Letter at end of Model Number represents Bowl Location

MECHANICAL REQUIREMENTS: 1/2" IPS Hot and Cold water. 1 1/2" IPS drain connection.

2100 SERIES



Model Numbers	Overall Length Ⓐ	Drainboard Ⓑ	Left Side to Drain Ⓒ	Bowl Location	Weight (lbs.)
KR21-44C	4'-0"	N/A	4"	Center	115
KR21-64C	6'-0"	12" Each	15"	Center	140
KR21-74C	7'-0"	18" Each	21"	Center	155
KR21-84C	8'-0"	24" Each	27"	Center	190

NOTE: Letter at end of Model Number represents Bowl Location

MECHANICAL REQUIREMENTS: 1/2" IPS Hot and Cold water. 1 1/2" IPS drain connection.



APPROVED BY:

CERTIFICATIONS:

Due to our commitment to continued product improvement, specifications are subject to change without notice.

Printed in the USA

Krowne Metal Corporation

100 Haul Rd. Wayne, NJ 07470 • Toll Free: (800) 631-0442 • Fax: (973) 872-1129

sales@krowne.com • www.krowne.com • www.facebook.com/KrowneMetal • www.twitter.com/KrowneMetal

Rev. 4/2016

No. 5.13