

# ITALIA MILK SHOWCASE

## STANDARD FEATURES

- Reinforced deck for heavy weight
- Double pane hinged back doors
- Dixell digital control
- Brushed stainless steel top, sides, and rear
- Bottom evaporator ventilation cooling
- Self contained air cooled condensing unit
- Stainless steel foam in place bottom and top
- Roll down shutter with lock
- Diffused LED light 3000°K
- Adjustable feet
- Cases ship standard stainless steel interior and exterior

## OPTIONS

- Stainless steel shelf in lieu of glass
- Black/white /RAL interior
- Remote/water cooled condensing unit
- Matches with Muro H11
- RAL color finish/wood laminate front and side panels
- Heated pan for evaporator
- Casters



Photo shown with standard stainless steel interior and exterior finish.



Visit our website for more finishing options and RAL colors  
[www.oscartek.com](http://www.oscartek.com)

ITALIA MILK				
TECHNICAL FEATURES		MODELS		
		ITALIA MILK 915 (ITLMILK36)	ITALIA MILK 1150 (ITLMILK45)	ITALIA MILK 1480 (ITLMILK58)
External Dimensions (L-D-H)	Inches	36" - 41 15/16" - 61 3/4"	45 1/4" - 41 15/16" - 61 3/4"	58 1/4" - 41 15/16" - 61 3/4"
	MM	915 - 1065 - 1569	1150 - 1065 - 1569	1480 - 1065 - 1569
Crated Dimensions (L-D-H)	Inches	43 3/8" - 49" - 69"	53" - 49" - 69"	66 7/8" - 49" - 69"
	MM	1100 - 1249 - 1752	1346 - 1249 - 1752	1700 - 1249 - 1752
Refrigeration	Type	Ventilated	Ventilated	Ventilated
Refrigeration Display Area	Type	Deck + Shelf	Deck + Shelf	Deck + Shelf
Operating Temperature	°F	+15°F	+15°F	+15°F
BTU'S @ +14°F Evap Temperature	BTU's	8000	9000	10,500
Electric Supply	V/Ph/Hz	208-220/1/60	208-220/1/60	208-220/1/60
Power Consumption	W/A	1850/8.9	1950/9.1	2150/11.1
Climatic Class	°F/H.R.	75°F-55%RH	75°F-55%RH	75°F-55%RH
Refrigerant Gas	Type	R404A / R452A	R404A / R452A	R404A / R452A
Pipe Size (Inches)	Suction, Liquid	5/8" Suction, 5/16" Liquid	5/8" Suction, 5/16" Liquid	3/4" Suction, 3/8" Liquid
Net Weights	Lb	350	450	600
Crated Weights	Lb	400	525	675

\*Factory in its effort to upgrade and improve our products, has the right to change, modify, discontinue or change any feature, size or capacity on any model without prior notice.

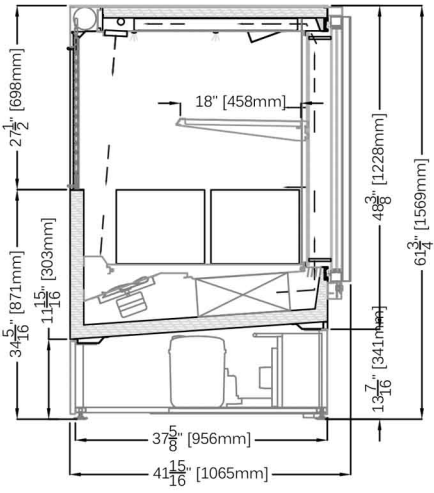


512 South Airport Blvd., South San Francisco, CA 94080  
 Tel: 855.885.2400 | 650.342.2400 | Fax: 650.342.7400  
[sales@oscartek.com](mailto:sales@oscartek.com) | [www.oscartek.com](http://www.oscartek.com)

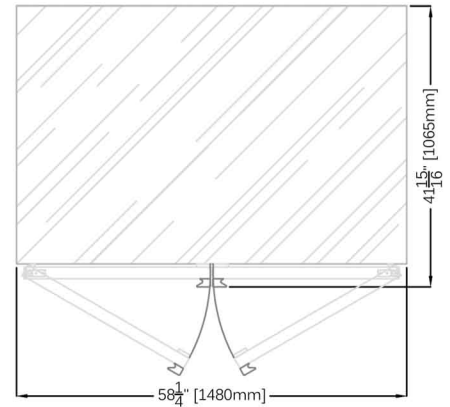
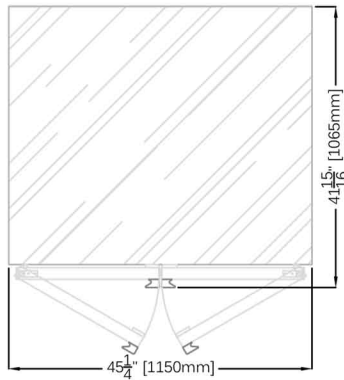
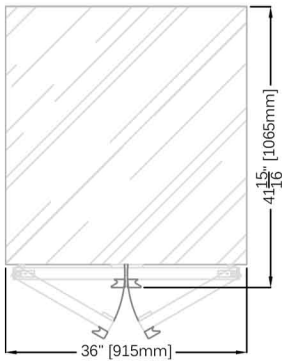


# ITALIA MILK SHOWCASE

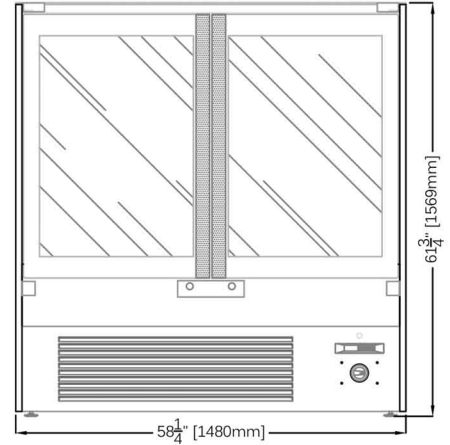
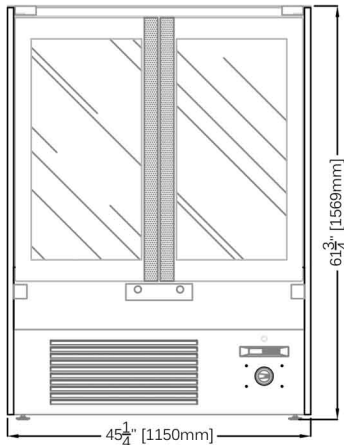
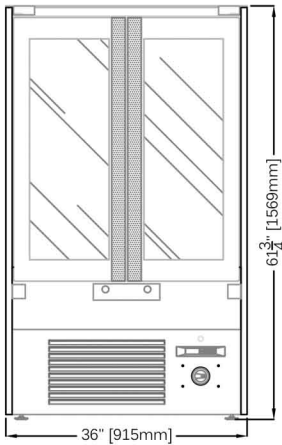
## SECTION VIEW: ITALIA MILK 915, 1150, 1480



## PLAN VIEWS: ITALIA MILK 915, 1150, 1480



## REAR ELEVATIONS (OPERATOR SIDE): ITALIA MILK 915, 1150, 1480



\*Factory in its effort to upgrade and improve our products, has the right to change, modify, discontinue or change any feature, size or capacity on any model without prior notice.



512 South Airport Blvd., South San Francisco, CA 94080  
 Tel: 855.885.2400 | 650.342.2400 | Fax: 650.342.7400  
 sales@oscartek.com | www.oscartek.com

