



BEVERAGE-AIR

| | |
|-----------------|------|
| Project: _____ | AIA# |
| Item: _____ | |
| Location: _____ | SIS# |
| Approved: _____ | |

SPE48HC SANDWICH PREP: DUAL SIDED MEGA TOP

FOOD PREPARATION TABLES

SPE48HC Sandwich Prep Table Dual Sided Mega Top Hydrocarbon Series

MODEL:
SPE48HC-18M-DS



5 Year Parts/Labor Warranty Available
7 Year Compressor Warranty

CABINET CONSTRUCTION

- Stainless steel front, sides, top, doors and grille (galvanized back & bottom)
- Interior liner is made of corrosion resistant aluminum
- Full electronic control
- Dual sided mega top
- Self-closing doors with 120° stay-open feature, on cartridge style hinges
- Easy door removal for service and cleaning
- Field-reversible doors (hinge kit not included)
- Snap-in magnetic gaskets for positive door seal
- Painted aluminum door handles
- 6" Casters, with (2) brakes standard
- 10" & 12" wide cutting board constructed of white polyethylene plastic
- Cutting board removable for cleaning
- Four (4) epoxy-coated steel wire shelves
- Eighteen (18) 1/6 4" deep pans constructed of polycarbonate plastic

OPTIONS & ACCESSORIES

- 3 Year parts/labor standard, additional 2 year warranty available
- Stainless steel back
- Stainless steel interior
- Door locks
- Overshelves (single or double)
- Crumb catcher kit
- Richlite cutting board
- Night cover
- Epoxy coated shelves
- Shelf clips
- Shelf dividers
- Bottle organizer
- Bun rack
- Pan supports
- Pan support crossbar
- 6" Legs or 3" casters
- Low profile casters
- Remote option* (see note on back page)

REFRIGERATION SYSTEM

- Uses environmentally friendly, energy efficient R290 refrigerant, and meets all regulatory requirements for CARB, SNAP, DOE & more
- Adaptive defrost
- Epoxy coated evaporator coil
- Maintains product temperatures between 36° - 38°F



Please verify qualifying units by visiting:
www.energystar.gov/cfs

3779 Champion Blvd., Winston-Salem, NC 27105
1-888-845-9800 Fax: 1-336-245-6453
Beverage-Air.com Sales@bevair.com



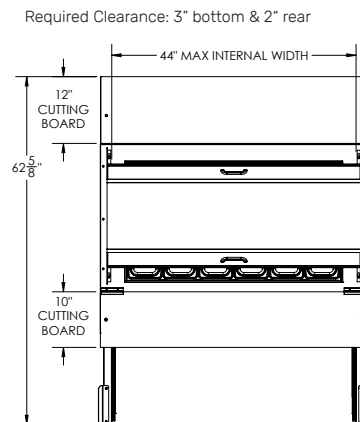
BEVERAGE-AIR

Food Preparation Table: Dual Sided Mega Top Model: SPE48HC-18M-DS

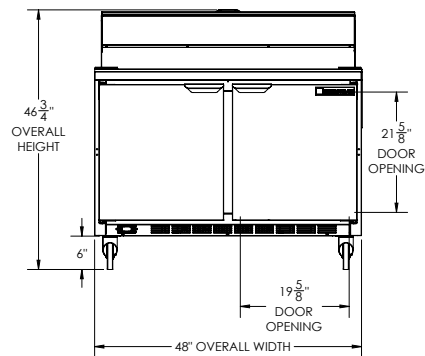
| MODEL | SPE48HC-18M-DS |
|----------------------------------|----------------|
| EXTERNAL DIMENSIONAL DATA | |
| Width Overall | 48" |
| Depth Overall | 48 ¾" |
| Height Overall with Casters | 46 ¾" |
| No. of Doors | 2 |
| Depth with Door Open 90° | 62 ⅝" |
| Door Openings | 19 ⅝" x 21 ⅝" |
| Width, Cutting Boards | 10" & 12" |
| INTERNAL DIMENSIONAL DATA | |
| NET Capacity (cubic ft.) | 13.01 |
| Internal Width Overall (in) | 44" |
| Internal Depth Usable (in) | 15 ⅜" |
| Internal Height Overall (in) | 23" |
| No. of Shelves | 4 |
| No. of Pans | 18 |
| ELECTRICAL DATA | |
| Full Load Amperes | 2.0 |
| REFRIGERATION DATA | |
| Horsepower | 1/6 |
| Capacity (BTU/Hr) | 1094 |
| Heat Rejection (BTU/Hr) | 1641 |
| Charge (lbs/grams) | 0.243/110 |
| SHIPPING DATA | |
| Gross Weight - Crated | 376 lbs |
| Height - Crated | 48" |
| Width - Crated | 51" |
| Depth - Crated | 38" |

*NOTE: Remote units are field wired and come with 6" legs.
Refrigerant must be specified at time of order.

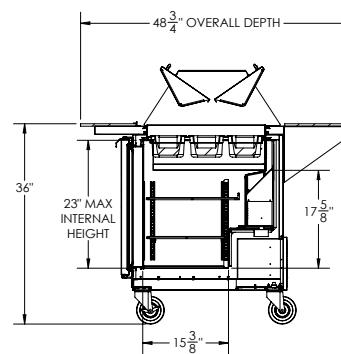
Model Views



PLAN VIEW



ELEVATION VIEW



SIDE VIEW



ELECTRICAL CONNECTION

115/60/1
NEMA 5-15P

Unit pre-wired at factory
and include 8' long cord
and plug set.