

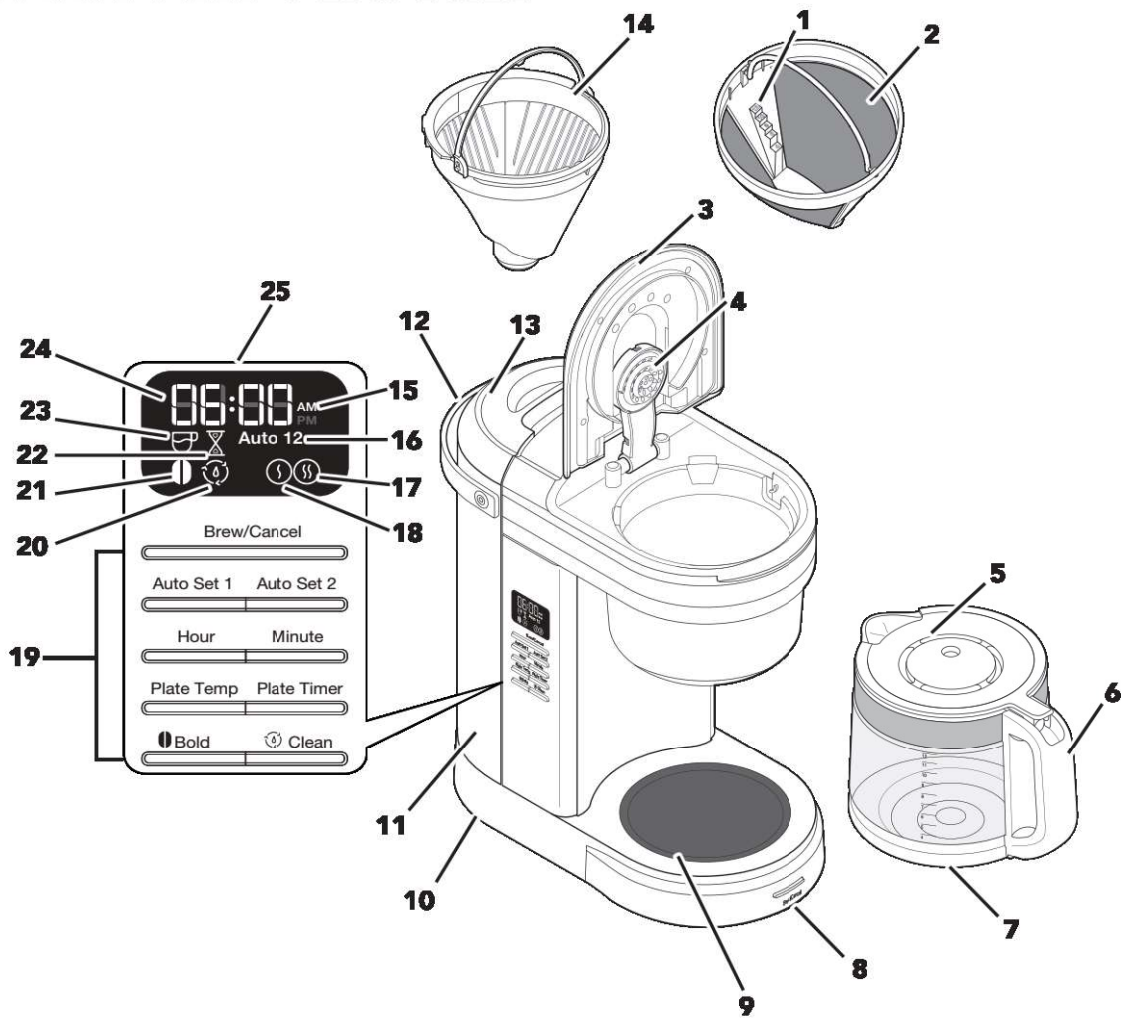


KitchenAid®

Coffee Maker
KCM1209



PARTS AND FEATURES



- | | | | |
|-----------|-----------------------------------------|-----------|--------------------------------------|
| 1 | Dosage Ladder | 14 | Brew Basket |
| 2 | Gold Tone Filter | 15 | A.M./P.M. Indicator |
| 3 | Brew Basket Lid | 16 | Auto 1 or 2 Icon |
| 4 | Showerhead | 17 | High Plate Temperature |
| 5 | Carafe Lid | 18 | Low Plate Temperature |
| 6 | Carafe Handle | 19 | Control Panel |
| 7 | Glass Carafe | 20 | Clean Icon |
| 8 | Brew/Cancel Button | 21 | Bold Icon |
| 9 | Warming Plate | 22 | Remaining Keep Warm Time Icon |
| 10 | Cord Storage in Base (not shown) | 23 | Brew Icon |
| 11 | Water Tank | 24 | Clock |
| 12 | Water Tank Handle | 25 | Programmable Display |
| 13 | Water Tank Lid | | |

NOTE: Default measurement for 1 cup = approximately 5 oz (147 ml).



PRODUCT SAFETY

Your safety and the safety of others are very important.

We have provided many important safety messages in this manual and on your appliance. Always read and obey all safety messages.



This is the safety alert symbol.

This symbol alerts you to potential hazards that can kill or hurt you and others.

All safety messages will follow the safety alert symbol and either the word "DANGER" or "WARNING." These words mean:

! DANGER

You can be killed or seriously injured if you don't **immediately** follow instructions.

! WARNING

You can be killed or seriously injured if you don't follow instructions.

All safety messages will tell you what the potential hazard is, tell you how to reduce the chance of injury, and tell you what can happen if the instructions are not followed.

IMPORTANT SAFEGUARDS

When using electrical appliances, basic safety precautions should always be followed, including the following:

1. Read all instructions.
2. Do not touch hot surfaces. Use handles or knobs.
3. Do not operate any appliance with a damaged cord or plug or after the appliance malfunctions, or is dropped or damaged in any manner. Contact the manufacturer at their customer service telephone number for information on examination, repair, or adjustment.
4. To protect against fire, electric shock and injury to persons do not immerse appliance in water or other liquid.
5. Unplug from outlet when not in use and before cleaning. Allow to cool before putting on or taking off parts, and before cleaning the appliance.
6. Close supervision is necessary when any appliance is used by or near children.
7. Do not let cord hang over the edge of table or counter or touch hot surfaces.
8. Do not place on or near a hot gas or electric burner, or in a heated oven.
9. The use of attachments not recommended or sold by KitchenAid may cause fire, electrical shock, or injury.
10. This appliance is not intended for use by children or by persons with reduced physical, sensory, or mental capabilities, or lack of experience and knowledge. Close supervision is necessary when any appliance is used near children. Children should be supervised to ensure that they do not play with the appliance.
11. Do not use the appliance outdoors.
12. Do not use appliance for other than intended use.
13. Do not use appliance without lid properly placed on carafe.
14. The carafe is designed for use with this appliance. It must never be used on a range top or in a microwave oven.



PRODUCT SAFETY

15. Do not set a hot carafe on a wet or cold surface.
16. To disconnect, turn any control to “off,” then remove plug from wall outlet.
17. Scalding may occur if the lid is removed during the brewing cycles.
18. Do not use a cracked carafe or a carafe having a loose or weakened handle.
19. Do not clean carafe with abrasive cleaners, steel wool pads, or other abrasive material.
20. Do not fill the water tank above the marked maximum fill line. Do not overfill Glass Carafe. If the Glass Carafe is overfilled, brewed coffee may be ejected.
21. This appliance is intended to be used in household and similar applications such as:
 - staff kitchen areas in shops, farmhouses, offices, or other working environments;
 - farmhouses;
 - by clients in hotels, motels and other residential type environments;
 - bed and breakfast type environments.
22. Refer to the “Care and Cleaning” section for instructions on cleaning the surfaces in contact with food.
23. If the supply cord is damaged, it must be replaced by the manufacturer, its service agent or similarly qualified persons in order to avoid a hazard.
24. The heating element surface is subject to residual heat after use. Do not touch hot surface. Use handles.

SAVE THESE INSTRUCTIONS

This product is designed for household use only.

ELECTRICAL REQUIREMENTS

⚠ WARNING



Electrical Shock Hazard

Plug into a grounded 3 prong outlet.

Do not remove ground prong.

Do not use an adapter.

Do not use an extension cord.

Failure to follow these instructions can result in death, fire, or electrical shock.

Voltage: 120 VAC
Frequency: 60 Hz
Wattage: 1100 W

NOTE: If the plug does not fit in the outlet, contact a qualified electrician. Do not modify the plug in any way. Do not use an adapter.

Do not use an extension cord. If the power supply cord is too short, have a qualified electrician or service technician to install an outlet near the appliance.

The cord should be arranged so that it will not drape over the countertop or tabletop where it can be pulled on by children or tripped over unintentionally.