



FlamBoyant™ 1160-6PG GAS



DESIGN

- High-performance, elegant, modern rotisserie with interior lighting to accent the beauty of your roasting meats & vegetables
- Porcelain enamel finish in your choice of color
- Stylish metallic valves and switches made of solid chrome
- Chic illuminated "RÔTISSERIE" sign (removable)

CULINARY ADVANTAGES

- Rapid roasting while still retaining traditional rotisserie quality
- 6 adjustable spits, each with its own motor and gas radiant
- State-of-the-art radiants manufactured by ROTISOL
- Separate interchangeable radiants for lower maintenance costs
- Wide variety of cooking accessories (See accessory list.)

SAFETY

- K.GLASS glass doors reduce heat loss, accelerating cooking and preventing burns.
- 2 doors to facilitate access and reduce heat loss (energy saver)
- Heat-proof, ergonomic door handles
- Doorstops control opening & closing and prevent breakage.
- Gas tubes & electric conduits are separated to prevent risk of explosion.

CLEANING

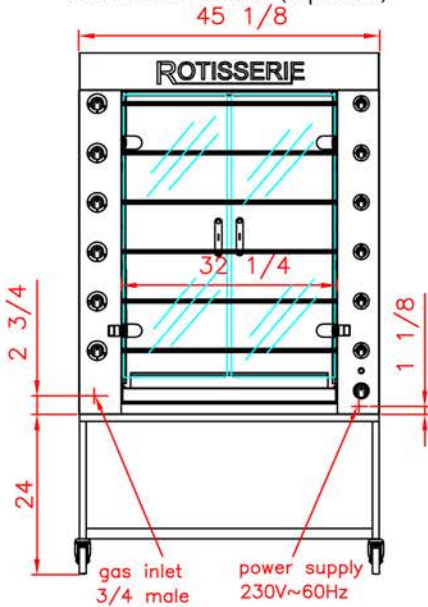
- Removable stainless steel plates between each row of radiants for easy cleaning
- Removable inside panels provide double protection to motors and gas components.
- Drip pan with a drain collects grease drippings for perfect hygiene and accident safety.
- Lighted sign extends out in the front to avoid grease accumulation.

COLOR OPTIONS

| | | | | | | | | | | | | | | | |
|-----------------------|-----------------------|----------------------|----------------------|-------------------------|-----------------------|------------------------|----------------------|---------------------|-------------------------|---------------------------|---------------------|-------------------|-------------------------|------------------------------|--------|
| STANDARD COLOR | RAL 9005 Glossy Black | RAL 1013 Pearl White | RAL 1015 Ivory | Rose | RAL 3014 Salmon | RAL 1017 Saffron | RAL 1023 Lemon | Pollen | Mustards | Lime | RAL 5003 Sapphire | Aubergine | RAL 7016 Anthracite | T5FW 640/7 Light Copper | Copper |
| RAL 3020 Scarlett Red | RAL 3013 Tomato Red | RAL 3003 Ruby Red | RAL 3004 Purple Red | RAL 8017 Dark Chocolate | RAL 6011 Almond Green | RAL 6001 Emerald Green | RAL 6002 Olive Green | RAL 6005 Moss Green | NPD 696/61 Glossy Green | RAL 7035 Light Gray | RAL 7037 Dark Gray | Steel | NPD 698/26 Glossy Steel | NPD 698/34 Petrol Blue Gloss | |
| RAL 2011 Marmalade | Orange | Caramel | RAL 8004 Dark Copper | RAL 8012 Chocolate | Salvia Gray | Iron Blue | Turquoise | Cobalt Blue | RAL 5002 Ultramarine | NPD 698/50 Dark Aubergine | CS 803 Mirror Black | RAL 7021 Charcoal | RAL 9003 White | RAL 9005 Flat Black | |

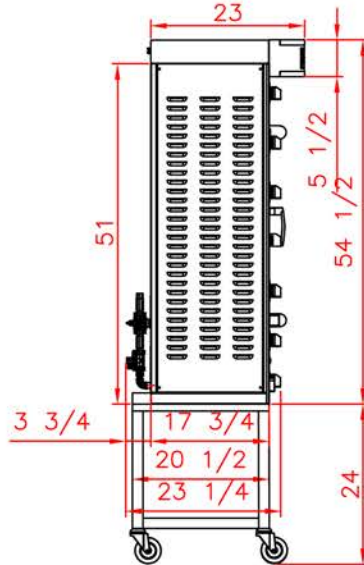
Front view

Rotisserie with roof (optional)
and base on casters (optional)

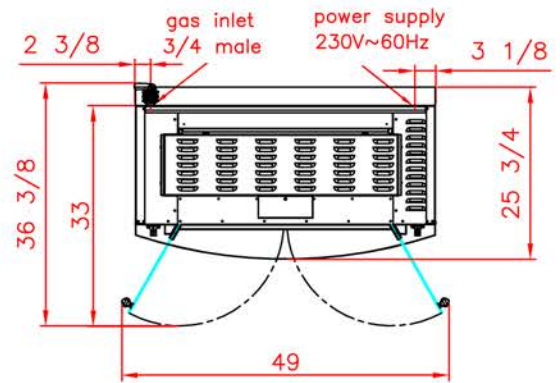


Side view

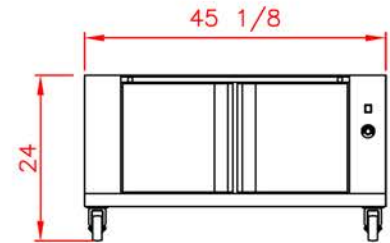
Rotisserie with roof (optional)
and base on casters (optional)



Top view
Rotisserie with roof (optional)
and base on casters (optional)



Front view
custom base cabinet (optional)



STANDARD FIXTURES

- STD FINISH : Black enamel with all stainless steel trims
- 6 adjustables spits
- Bottom drip pan with drain valve
- 2 Tempered Glass Doors (K.Glass)
- 4 casters with front brakes
- Self-Igniting Pilots
- 6 Individuals Motors
- Roof with Lighted Rotisserie Sign
- 208 / 230 V 60 hertz

SPECIFICATIONS

| | |
|-----------------------------|--|
| Gas Power | 77000 BTU/hr |
| Gas minimum pressure | <u>Natural</u> : 7" W.C. minimum ; <u>Propane</u> : 11" W.C. |
| Gas connector | 3/4" male |
| Electricity | 208-230 Volts 60 hertz 1 phase+neutral+earth |
| Capacity | 24/30 poultries |
| Warranty | 1 year parts and labor |
| Venting | Hood installed conformly with all local codes |
| Minimum clearance | 2 1/2" on the right, left and rear side |
| Shipping weight | 330 LBS |

ACCESSORIES

| | | | | | |
|--|--|--|--|---|--|
| Anti-cutting prongless spit. ref : CUI1160 | | Lamb/suckling-pig spit. ref : BA1160 | | Raised rack. ref : GSV1160 | |
| Anti-cutting prongless spit. ref : FIL1160 | | Vertical spit system. ref : FI1160 | | Stainless steel tray to unspit. ref : PID1160 | |
| Chicken spit. ref : BP1160 | | Roast clamp spit. ref : BRRO1160 | | Spit mover. ref : DEC | |
| Sabre spit. ref : BS1160 | | Basket spit. ref : BRC1160 | | Gas lighter. ref : AT | |

Chicken

Turkey

Lamb

Pork

Fish

Beef

Potatoes

