



Discover the Art of Display...



Gem Drop In Neutral

Visit our website for optional RAL colors and Materials finishes.

[RAL Colors Website](#)

[Materials Brochure PDF](#)

Project Name: \_\_\_\_\_

Item #: \_\_\_\_\_ Quantity: \_\_\_\_\_

# GEM DROP IN NEUTRAL

**MODELS:** GEM DI-N800, N900, N1000, N1100, N1300, N1500, N1700, N2000, N2100

## STANDARD FEATURES

- Extra clear glass: front, top, sides glasses
- All tempered glass
- Diffused LED lighting 3000°K
- Stainless steel lower interior foam tub
- Galvanized chassis structure
- Cases ship standard unfinished front

## OPTIONS

- Epoxy RAL color interior over stainless steel

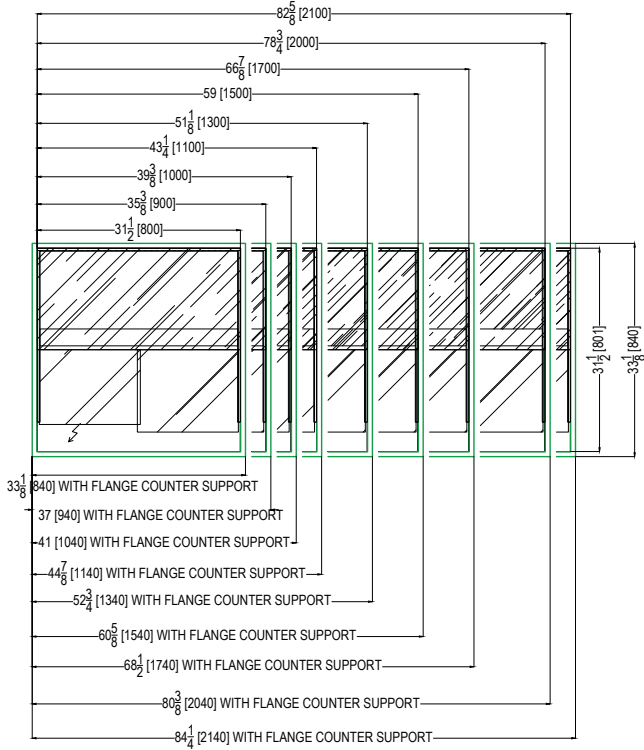
*\*Oscartek® reserves the right to change, modify, discontinue, or change any features, sizes, or capacity on any model without prior notice.*

OSCARTEK®  
512 South Airport Blvd., South San Francisco, CA 94080  
Tel: 855.885.2400 | 650.342.2400 | Fax: 650.342.7400  
sales@oscartek.com | www.oscartek.com



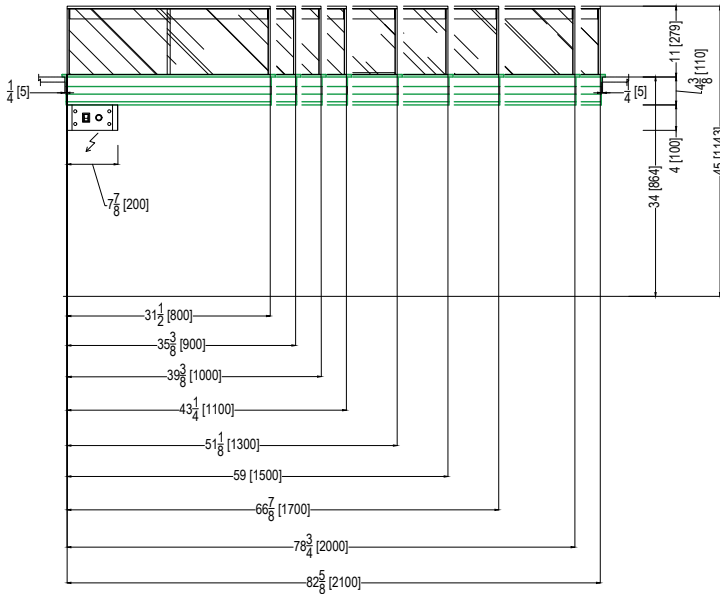
**MODELS:** GEM DI-N800, N900, N1000, N1100, N1300, N1500, N1700, N2000, N2100

**GEM PLAN VIEWS**



ELECTRICAL LEGEND	
	POWER

**GEM REAR ELEVATIONS**



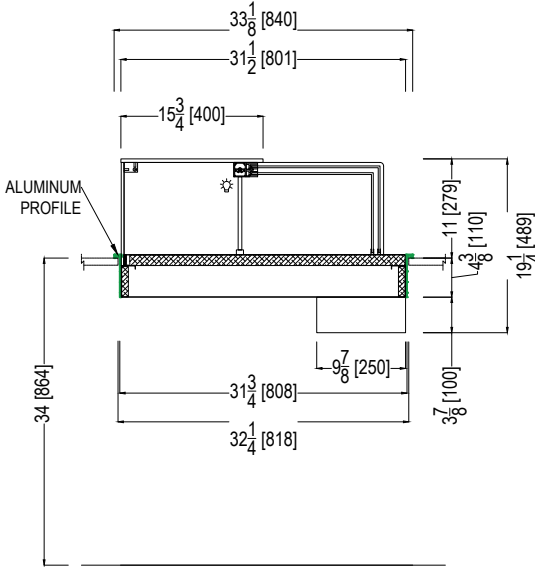
\*Oscartek® reserves the right to change, modify, discontinue, or change any features, sizes, or capacity on any model without prior notice.

OSCARTEK®  
512 South Airport Blvd., South San Francisco, CA 94080  
Tel: 855.885.2400 | 650.342.2400 | Fax: 650.342.7400  
sales@oscartek.com | www.oscartek.com



**MODELS:** GEM DI-N800, N900, N1000, N1100, N1300, N1500, N1700, N2000, N2100

**STANDARD: GEM - 33"D SECTION VIEW**



GEM DROP IN(DI) NEUTRAL						
TECHNICAL FEATURES		MODELS				
		GEM DI-N800	GEM DI-N900	GEM DI-N1000	GEM DI-N1100	GEM DI-N1300
External Dimensions (L-D-H) Inches-MM	Inches MM	*33 1/8" - 33 1/8" - 19 1/4" *840 - 840 - 489	*37" - 33 1/8" - 19 1/4" *940 - 840 - 489	*41" - 33 1/8" - 19 1/4" *1040 - 840 - 489	*44 7/8" - 33 1/8" - 19 1/4" *1140 - 840 - 489	*52 3/4" - 33 1/8" - 19 1/4" *1340 - 840 - 489
Crated Dimensions (L-D-H) Inches-MM	Inches MM	40" - 40 1/2" - 27" 1016 - 1030 - 686	44" - 40 1/2" - 27" 1117 - 1030 - 686	49" - 40 1/2" - 27" 1245 - 1030 - 686	52" - 40 1/2" - 27" 1320 - 1030 - 686	59" - 40 1/2" - 27" 1498 - 1030 - 686
Operating Temperature	°F	Ambient	Ambient	Ambient	Ambient	Ambient
Electric Supply	(V/Ph/Hz)	120/1/60	120/1/60	120/1/60	120/1/60	120/1/60
Power Consumption	(W/A)	16 / 0,1	18 / 0,1	22 / 0,1	22 / 0,1	26 / 0,1
Net Weights	Lbs	200	240	290	290	350
Crated Weights	Lbs	260	300	360	360	420

\*DIMENSIONS WITH FLANGE COUNTER SUPPORT

GEM DROP IN(DI) NEUTRAL					
TECHNICAL FEATURES		MODELS			
		GEM DI-N1500	GEM DI-N1700	GEM DI-N2000	GEM DI-N2100
External Dimensions (L-D-H) Inches-MM	Inches MM	*60 5/8" - 33 1/8" - 19 1/4" *1540 - 840 - 489	*68 1/2" - 33 1/8" - 19 1/4" *1740 - 840 - 489	*80 3/8" - 33 1/8" - 19 1/4" *2040 - 840 - 489	*84 1/4" - 33 1/8" - 19 1/4" *2140 - 840 - 489
Crated Dimensions (L-D-H) Inches-MM	Inches MM	67" - 40 1/2" - 27" 1702 - 1030 - 686	76" - 40 1/2" - 27" 1930 - 1030 - 686	88" - 40 1/2" - 27" 2235 - 1030 - 686	92" - 40 1/2" - 27" 2337 - 1030 - 686
Operating Temperature	°F	Ambient	Ambient	Ambient	Ambient
Electric Supply	(V/Ph/Hz)	120/1/60	120/1/60	120/1/60	120/1/60
Power Consumption	(W/A)	30 / 0,2	34 / 0,2	40 / 0,2	42 / 0,2
Net Weights	Lbs	400	490	620	660
Crated Weights	Lbs	480	570	730	770

\*DIMENSIONS WITH FLANGE COUNTER SUPPORT

\*Oscartek® reserves the right to change, modify, discontinue, or change any features, sizes, or capacity on any model without prior notice.