

Fusion

GHSS 60"H Refrigerated Self-Service Case w/ Flat Profile

Structural Concepts®

(Lengths do not include 1-1/8" end panels)

- **GHSS460RLB** 48-3/4"L x 43"D x 59-5/8"H
- **GHSS560RLB** 60-5/8"L x 43"D x 59-5/8"H
- **GHSS660RLB** 73-1/8"L x 43"D x 59-5/8"H
- **GHSS860RLB** 97-1/2"L x 43"D x 59-5/8"H
- **GHSS1060RLB** 121-1/8"L x 43"D x 59-5/8"H
- **GHSS1260RLB** 146-1/4"L x 43"D x 59-5/8"H

Included

- Integrated average product temperature of 40°F or less
- LED top & shelf lights
- One year parts & labor warranty
- Remote DX refrigeration
- Stainless steel rear exterior



GHSS460RLB

| Specify | Standard Features | Additional Options |
|--------------------------------|----------------------------------------------|-----------------------------------------------------------------------------------------------------------------------------------|
| EXTERIOR COLOR | • Powder coated (stock colors, specify RAL#) | • Laminated (non-premium) Confirm pattern/grain direction • Stainless steel |
| INTERIOR COLOR | • Black powder coated | • Stainless steel |
| LOWER FRONT PANEL COLOR | • Black powder coated | • Stainless steel |
| TRIM COLOR | • Black | • Silver |
| BASE | • Rail system for shims | |
| BUMPER FRONT | • 1" Boston bumper (specify color) | • 1" Stainless steel plate rail bumper |
| END PANELS | • None (specify per line-up) | • Cutaway w/ glass (LH / RH) • End bumper (LH / RH) • Full w/stainless steel interior (LH / RH) |
| SCALE STAND | • None | ¹ • Scale stand w/ receptacle & CAT5 (specify location) ¹ • Scale stand w/ receptacle (specify location) |
| UPPER REAR | • Solid back panel | • Solid rear swinging doors |
| PRICE TAG MOLDING | • None | • 1" Price tag molding (black or silver) • Universal price tag molding (clear w/ open top) |
| SHELVING | • 10" & 14" & 18" & 22" Solid shelving | • 10" & 14" & 18" & 22" Glass shelving |
| LIGHTS | • LED 3500K w/ frosted lens | • LED 4000K w/ frosted lens |
| ELECTRICAL CONNECT | • Electrical leads (remote) | |
| REFRIGERATION | • Remote DX refrigeration | • Remote w/thermostat, solenoid & TXV |
| SENSOR | • None | • CPC discharge air sensor (remote) • Danfoss discharge air sensor (remote) |
| MISCELLANEOUS | | • Rear door lock |
| ACCESSORIES | | • Drain strainer • Night curtain, retractable, non-locking • Removable wire security cover, locking |

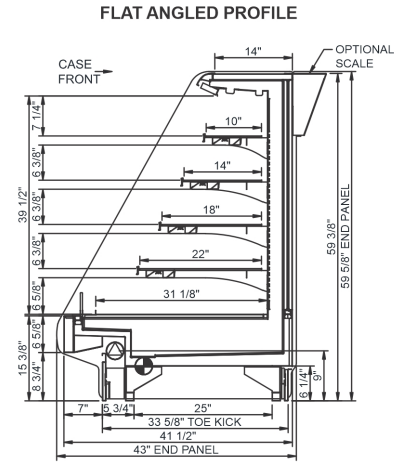
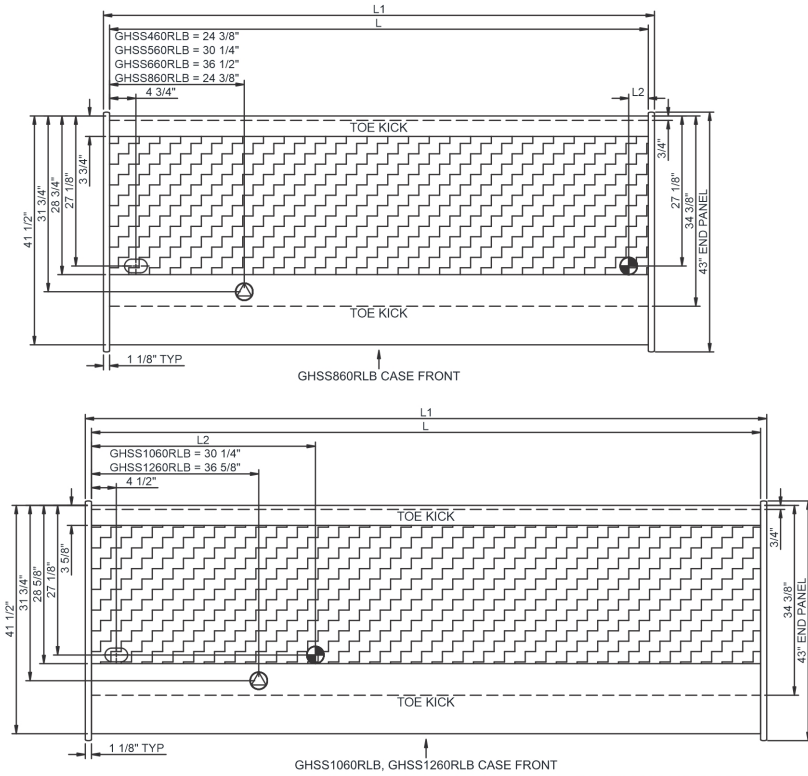
Option Notes: ¹ - Separate circuit required

Intended Environment: Type I - Designed to operate in ambient conditions of 75°F with 55% relative humidity unless noted otherwise in system information below.

| Zone | Intended Product To Be Displayed | Warmest Avg Prod Temp ° F |
|------|----------------------------------|---------------------------|
| 1 | Packaged refrigerated products | 40 |

PLAN VIEW

SIDE VIEW



NOTE: ALL DIMENSIONS APPROXIMATE

- ELECTRICAL JUNCTION BOX (SUPPLIED WITH 6" LEADS OR POWER CORD).
- REFRIGERATION LINE CONNECTION.
- DRY CASE SERVICE ACCESS AREA.
- LOCATION OF DRAIN TUBE FOR REMOTE REF. ONLY (SUPPLIED WITH 3/4" OR 1 1/2" PVC TUBE).
- REMOTE FLOOR SINK & UTILITIES ACCESS AREA.
- SELF-CONTAINED CASE SERVICE ACCESS AREA.

| Model Technical Specifications | | | | | | | | | | | | | | | | |
|--------------------------------|--------|--------|-------|----------------------|------------|---------|-----|------|----------|-------|-------|----------------|-------|-----------------|-----------------|--------|
| Model | L" | L1" | L2" | System Circuit Volts | | | Phs | Freq | Amps *** | Watts | Wires | NEMA Plug | SST | Conv. Rack RTU# | Para. Rack RTU# | Est Wt |
| GHSS460RLB | 48.75 | 51.00 | 3.50 | Remote(Type I) | Circuit #1 | 110-120 | 1 | 60 | 1.48 | 81 | 2+G | Leads Multiple | 20.00 | 5625 | 5208 | N/A |
| GHSS560RLB | 60.63 | 62.88 | 3.50 | Remote(Type I) | Circuit #1 | 110-120 | 1 | 60 | 2.54 | 148 | 2+G | Leads Single | 20.00 | 7042 | 6520 | N/A |
| GHSS660RLB | 73.13 | 75.38 | 3.50 | Remote(Type I) | Circuit #1 | 110-120 | 1 | 60 | 2.67 | 193 | 2+G | Leads Multiple | 20.00 | 9223 | 8540 | N/A |
| | | | | Remote(Type I) | Circuit #1 | 110-120 | 1 | 60 | 3.29 | 173 | 2+G | Leads Multiple | 20.00 | 9223 | 8540 | N/A |
| GHSS860RLB | 97.50 | 99.75 | 3.50 | Remote(Type I) | Circuit #1 | 110-120 | 1 | 60 | 3.05 | 249 | 2+G | Leads Multiple | 20.00 | 12053 | 11160 | N/A |
| | | | | Remote(Type I) | Circuit #1 | 110-120 | 1 | 60 | 4.03 | 268 | 2+G | Leads Multiple | 20.00 | 12053 | 11160 | N/A |
| GHSS1060RLB | 121.13 | 123.38 | 40.50 | Remote(Type I) | Circuit #1 | 110-120 | 1 | 60 | 3.86 | 295 | 2+G | Leads Multiple | 20.00 | 13932 | 12900 | N/A |
| | | | | Remote(Type I) | Circuit #1 | 110-120 | 1 | 60 | 3.82 | 267 | 2+G | Leads Multiple | 20.00 | 13932 | 12900 | N/A |
| GHSS1260RLB | 146.25 | 148.50 | 45.13 | Remote(Type I) | Circuit #1 | 110-120 | 1 | 60 | 4.59 | 384 | 2+G | Leads Multiple | 20.00 | 14515 | 13440 | N/A |

*** Does not include electric defrost on freezer models.

| Regulatory Approvals: | |
|-----------------------|-----------------------------------------------------------------------------------------------------------------------------|
| All Models | Accordance with AHRI Std 1200 ETL Listed to UL 471 ETL Listed to CAN/CSA 22.2 No. 120 ETL Sanitation to NSF/ANSI 7 |

Important Notes:

- 1) ELECTRICAL NOTE: If GFCI is required, a GFCI breaker MUST be used in lieu of a GFCI receptacle.
 - 2) 45" minimum door entry clearance required (without shipping skid).
 - 3) Units must be shimmed during installation to ensure the unit is level and plumb.
- ⚠ WARNING:** This product can expose you to chemicals, including Urethane (Ethyl Carbamate), which are known to the State of California to cause cancer and birth defects or other reproductive harm. For more information go to www.P65Warnings.ca.gov.



Note: Information is subject to change at any time. Visit www.structuralconcepts.com for the most current specs.

21875514 Revised 4-20-2022