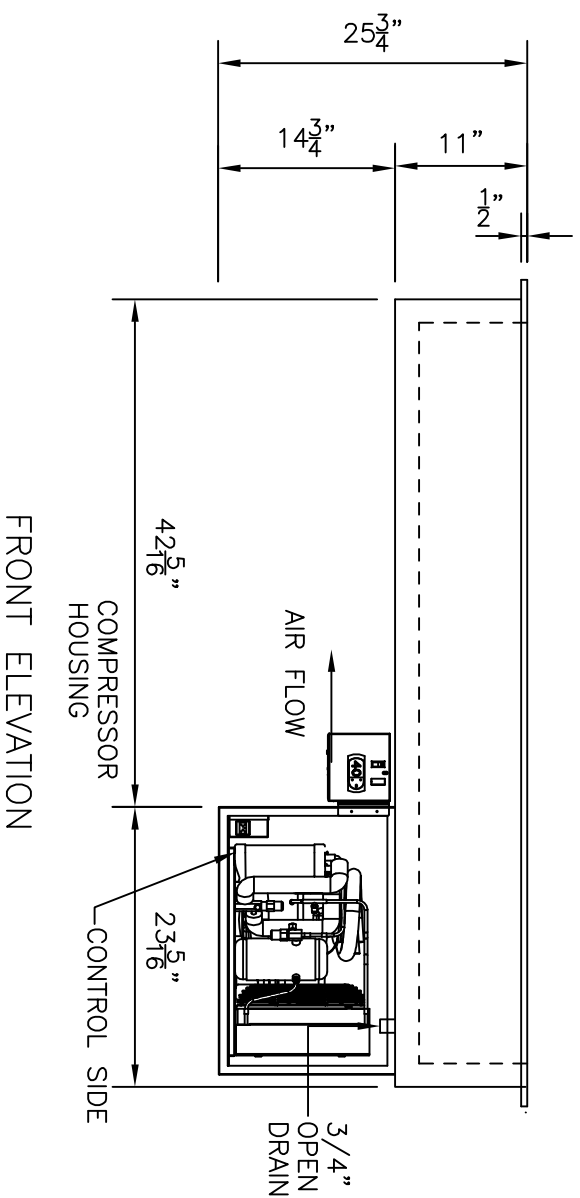
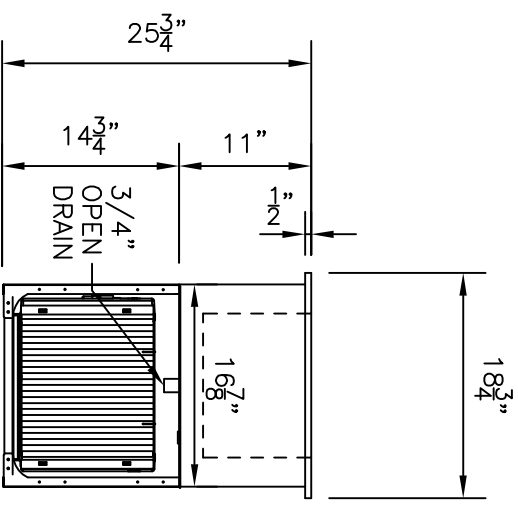


PLAN VIEW

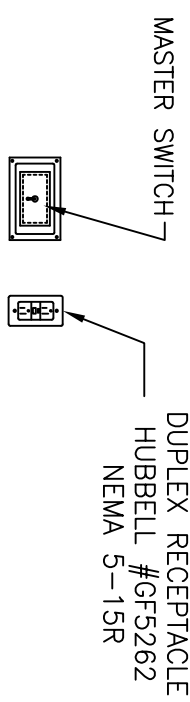


FRONT ELEVATION



FRONT ELEVATION

END VIEW

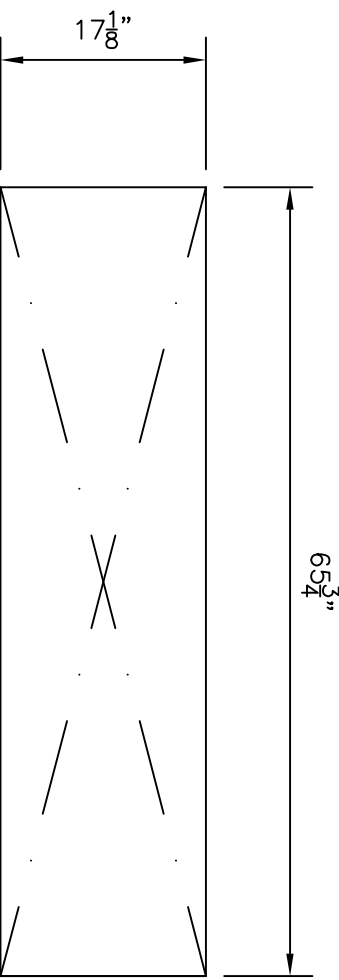


FURNISH 1/9TH SIZE PAN WITH JUNCTION BOX AND BALL BAT SWITCH TO BE WIRED TO RECEPTACLE. FURNISH 36" OF FLEX AND PRE-WIRE FROM SWITCH TO RECEPTACLE COLD PAN TO BE PLUGGED INTO SWITCHED RECEPTACLE

CONSTRUCTION

TOP FLANGE TO BE 14 GA STAINLESS STEEL, 1/2" TURN DOWN EDGE AND SECURED TO INTERIOR OF COLD PAN. INTERIOR PAN TO BE 18 GA STAINLESS STEEL, FULLY WELDED, GROUND AND POLISHED, WITH A 3/4" OPEN DRAIN. TO BE FULLY INSULATED WITH 1 1/2" TO 2" URETHANE INSULATION. THE EXTERIOR JACKET TO CONSTRUCTED OF 26 GA. GALVANIZED STEEL.

REFRIGERATION SYSTEM TO BE A HERMETICALLY SEALED COMPRESSOR OPERATING ON R-507 (HFC) REFRIGERANT, AND WILL INCLUDE THE "TEMPEST-AIRE" CIRCULATING COLD AIR SYSTEM. THERMOSTAT CONTROL WILL CLEAR THE COOLING SURFACE OF FROST ON EVERY CYCLE. ALL SWITCHES AND CONTROLS TO BE FULLY ACCESSIBLE. PROVIDED WITH A CORD AND PLUG.



CUT-OUT REQ'D.

210 CFM MIN. AIR FLOW REQUIREMENTS  
OPEN CROSS FLOW RECOMMENDED  
AIR INTAKE MUST BE UNRESTRICTED  
IMPROPER AIR FLOW WILL DAMANGE UNIT  
AND VOID FACTORY WARRANTY

-NOTE-  
COLD PAN CONSTRUCTED TO ACCEPT THREE (3) FULL SIZE PANS UP TO 6" DEEP

ITEM #  
TEMP-EST AIRE DROP IN COLD PAN  
SCALE 3/4" = 1'-0"  
ONE (1) REQUIRED

MODEL #DI-1262TA-T-SLIM  
ELECT - 120V - 8.5A - 5-15 PLUG  
COMPRESSOR - 1/3 HP

ORDER #:	CHECKED BY:	
DRAWN BY: C.HAMMONDS		
REVISIONS:		
REVISIONS:		
SCALE: 3/4" = 1'-0"		
DATE: 4-16-08	SHEET# K-1 OF 1	DWG# DI-1262TA-T-SLIM
PROJECT: THREE (3) PAN SLIM LINE TEMP-EST AIRE DROP IN UNIT DEALER:		
LOW TEMP INDUSTRIES, INC. • P.O. BOX 795 • JONESBORO, GA 30237-0795 • (770) 478-8803		