

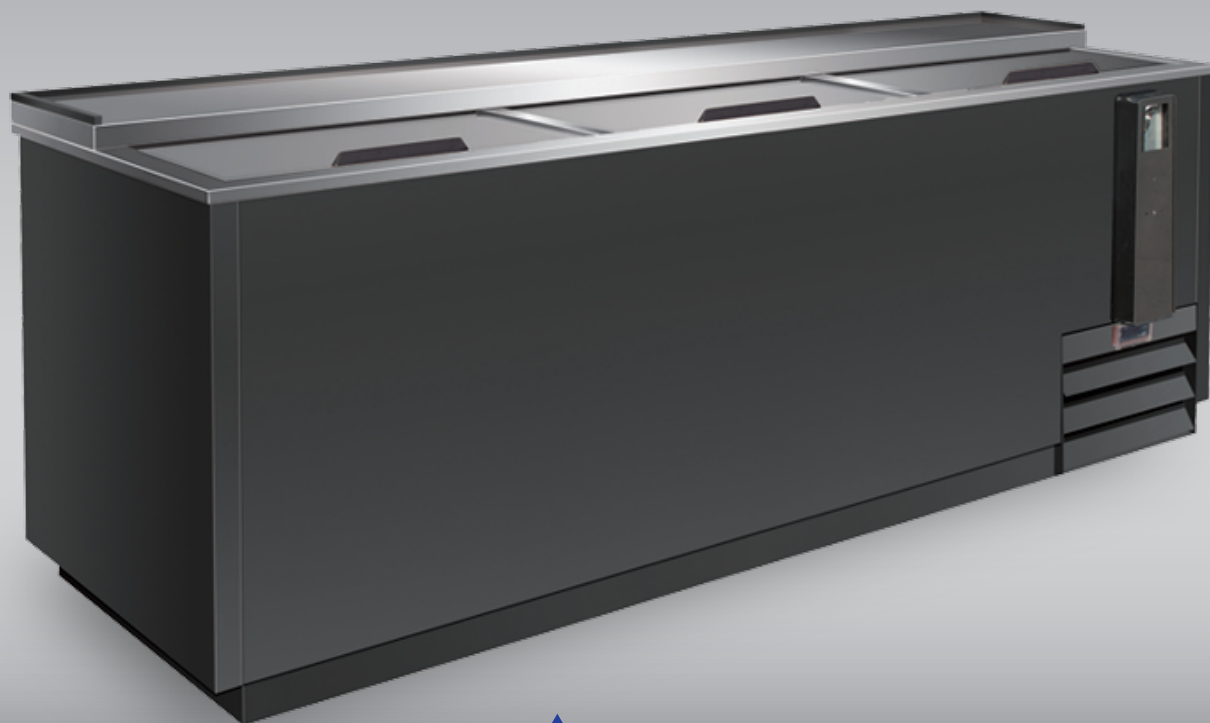
# SERV-WARE™ Bottle Cooler

Product Spec Sheet

Item #   
Project :   
Qty :

Model No.

**BC-95-HC**



**BC-95-HC**

## Features:

- CFC free refrigerant and foam
- Forced-air cooling
- Adjustable dividers included
- Self-defrosting evaporator
- Bottle cap opener and cap catcher standard
- Locking stainless steel sliding doors
- INTERIOR: Stainless steel
- EXTERIOR: Steel painted black, stainless steel sliding doors and landing edge

## Warranty Info:

### Two Year

- Parts & Labor on entire unit.
- Valid in United States.
- Valid for commercial use only.

### Three Year

- Additional Compressor, Part Only.

Revised 06/16/2021

**BC-95-HC**



Intertek



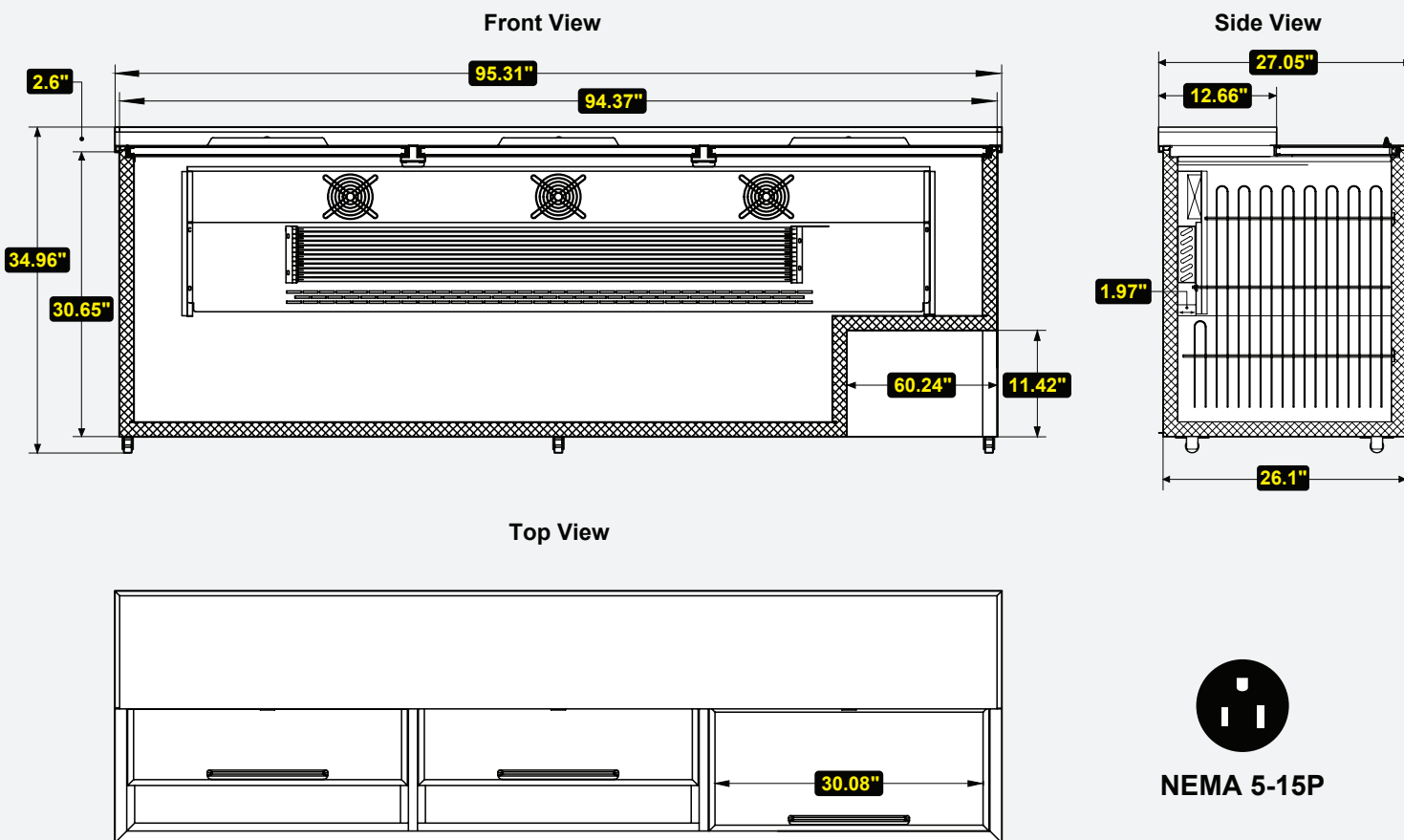
Intertek



[www.servware.com](http://www.servware.com)

Phone:(800).768.5953

Fax:(800).976.1299



## Technical Information:

MODEL #	DESCRIPTION	DIMENSIONS ( W x D x H )	WEIGHT/LBS. (Shipping)
BC-95-HC	95 in. Unit	95.3" W x 27" D x 35" H	401 lbs.

CONSTRUCTION	
Exterior Material	Black Painted Steel
Interior Material	Stainless Steel
Insulation Material	CFC Free Foam
Shelf Material	PVC Coated Wire
Number of Shelves	1 per Door

COOLING	
Temperature Range	33°F – 41°F
Refrigerant+Charge oz.	R290 / 0.00 oz.
BTU/H	7600
Defrosting	Every 6 Hours
Horse Power	1/2
Storage Capacity	26 cu. ft.

ELECTRICAL	
Voltage	115
Amps	3.3
Hz	60
Phase	1

ADDITIONAL INFORMATION	
<p><i>Installation by certified commercial restaurant equipment installer recommended. Inspection before and after installation by licensed electrician for safe operation. Product designed for <u>interior</u> usage in a climate controlled location with adequate air circulation and not adjacent to a high temperature source.</i></p>	