

Cuisine Series Heavy Duty French Top Range

Project _____
Item _____
Quantity _____
CSI Section 11400
Approved _____
Date _____

Models

- C36-15R • C36-15S
- C36-15C • C36-15M



Model C36-15C

3 - 35,000 BTU/h open burners with 3 - 15,000 BTU/h 12" hot tops

Standard Features

- 3 - 15,000 BTU/h hot tops
- One-piece cast iron grates and bowls over each open top burner
- Stainless steel front and sides
- Stainless steel front rail
- Stainless steel burner box
- 1-1/4" NPT front gas manifold
- Can be installed individually or in a battery
- 7" (178mm) high stainless steel stub back
- 6" (152mm) stainless steel adj. legs
- Porcelain oven interior w/removable bottom
- R model - 4 rack positions
C model - 3 rack positions
- R model - 1 chrome plated rack
C model - 3 chrome plated racks
- Fully insulated oven interior
- Safety oven pilot
- Oven thermostat control: 150°-500°F (66°- 260°C) (R/C)
- Range base convection oven (C) c/w NEMA 5-15P cord & plug, 1/3 hp motor, 120V 60Hz, 0.6A
- Modular unit (M) can be mounted on Polar Cuisine refrigerated base

Options & Accessories

- Stainless steel oven interior in lieu of porcelain oven interior - NC
- Single or double deck high shelf or back riser
- Full height stand for modular base with legs or casters
- Stainless steel intermediate shelf for cabinet base
- Stainless steel door(s) for cabinet base units
- Stainless steel back
- Continuous plate rail, 48-72" for battery installations
- Gas shut-off valves: 3/4", 1", 1 1/4" NPT (Specify)
- Gas regulator: 3/4", 1", 1 1/4" NPT (Specify)
- Gas flex hose w/ quick disconnect: 3/4", 1", 1 1/4" NPT (Specify)
- Rear Gas Connection: 3/4", 1", 1 1/4" NPT (Specify)
- Set of (4) flanged feet (for fastening unit to the floor)
- Set of (4) 5" polyurethane non-marking swivel casters w/front brakes
- Set of (4) 6" swivel casters, w/front brakes
- Extra oven rack
- Extension for 1/9 pans

Specifications

Garland Cuisine 36" (914mm) wide Heavy Duty Range Series. Model _____ with total BTU/h rating of _____ when used with natural/propane gas. Stainless steel front and sides. 6" (152mm) legs with adjustable feet.

Ovens - One piece oven door. Stainless steel oven interior with a heavy-duty, "keep-cool" door handle. Standard oven comes with a thermostat with a temperature range from 150° (low) to 500°F (66°-260°C).

12" (305mm) French Tops - 35,000 BTU/h open top burner under front open - top section and 15,000 BTU/h burner under rear hot top section.

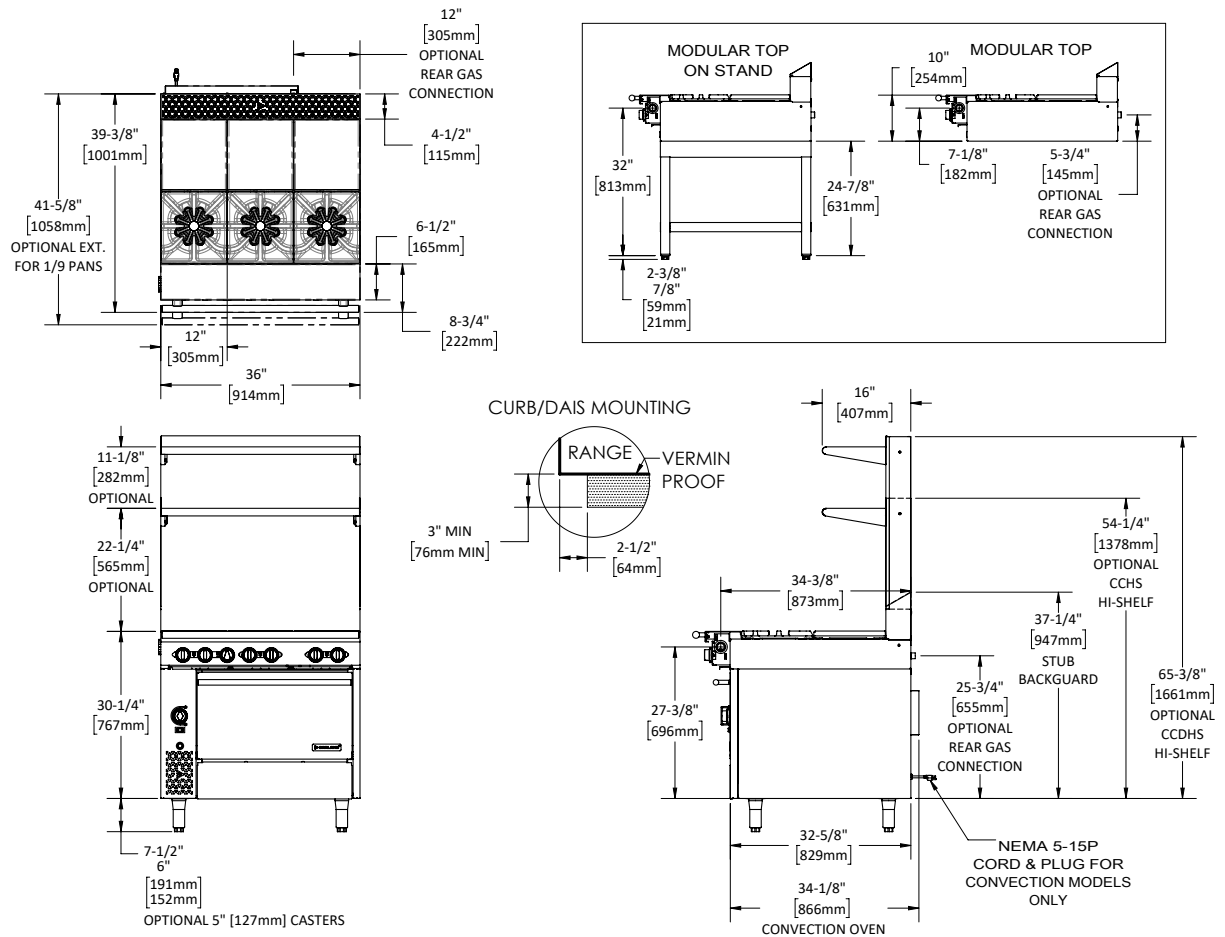
Note: Range-based convection oven models can be located in the middle of a battery, banked back-to-back with other equipment, and can be positioned against a wall.

NOTE: Ranges supplied with casters must be installed with an approved restraining device.



Cuisine Series Heavy Duty French Top Range

Cuisine Series Heavy Duty French Top Range



Model #	Description	Total BTU/h NAT. Gas	Total BTU/h Propane	Shipping		Individual Burner Ratings (BTU/h)						
				Cu Ft	lbs/kg	Burner	NAT.	PRO.	Burner	NAT.	PRO.	
C36-15R	(3) 12" (305mm) French Tops/ Standard Oven	190,000	179,000	53	600/272	Open Top	35,000	33,000	Std. Oven	40,000	35,000	
C36-15C	(3) 12" (305mm) French Tops/ Convection Oven	187,000	179,000	53	600/272	12" Hot Top	15,000	15,000	Conv. Oven	37,000	35,000	
C36-15S	(3) 12" (305mm) French Tops/ Storage Base	150,000	144,000	53	414/188	Interior Dimensions: In (mm)						
C36-15M	(3) 12" (305mm) French Tops/ Modular Top	150,000	144,000	30	329/149	Product	Height	Width	Depth			
							Standard Oven	13-1/2(343)	26-1/4 (667)	29 (737)		
							Convection Oven	13-1/2(343)	26-1/4 (667)	25 (635)		
							Cabinet Base	20-1/2 (521)	32-1/4 (819)	31 (787)		

*1/3 hp motor 120V 60Hz 0.6A c/w NEMA 5-15P cord and plug

Combustible Wall Clearance	
Sides	Back
10" (254mm)	6" (152mm)

Gas Pressure	NAT.	PRO.
Minimum Supply	7" WC	11" WC
Manifold Operating Pressure	6" WC	10" WC
Gas Manifold 1-1/4" NP		

Welbilt reserves the right to make changes to the design or specifications without prior notice.

Garland Commercial Ranges Ltd.
1177 Kamato Road,
Mississauga, Ontario
L4W 1X4 CANADA

General Inquires 1-905-624-0260
USA Sales, Parts and Service 1-800-424-2411
Canadian Sales 1-888-442-7526
Canada or USA Parts/Service 1-800-427-6668

www.garland-group.com
7904
12/21