

# Fusion

GLDSS 43"H Refrigerated Self-Service Case

**Structural Concepts®**

DELIVERING FRESH. ALWAYS.™

(Lengths do not include 1" end panels)

- **GLDSS443R** 48-3/4"L x 46-7/8"D x 43-3/8"H
- **GLDSS543R** 60-5/8"L x 46-7/8"D x 43-3/8"H
- **GLDSS643R** 73-1/8"L x 46-7/8"D x 43-3/8"H
- **GLDSS843R** 97-1/2"L x 46-7/8"D x 43-3/8"H
- **GLDSS1043R** 121-1/8"L x 46-7/8"D x 43-3/8"H
- **GLDSS1243R** 146-1/4"L x 46-7/8"D x 43-3/8"H

## Included

- Integrated average product temperature of 40°F or less
- One year parts & labor; 5 year compressor warranty
- Stainless steel rear exterior



**GLDSS643R**

Specify	Standard Features	Additional Options
<b>EXTERIOR COLOR</b>	<ul style="list-style-type: none"> <li>Laminate (stock colors)</li> </ul>	<ul style="list-style-type: none"> <li>Laminate (non-stock colors)</li> <li>Powder coated (stock/non-stock colors)</li> <li>Powder coated Silversan Black</li> <li>Stainless steel</li> </ul>
<b>INTERIOR COLOR</b>	<ul style="list-style-type: none"> <li>Powder coated Silversan Black</li> </ul>	<ul style="list-style-type: none"> <li>Stainless steel</li> </ul>
<b>LOWER FRONT PANEL COLOR</b>	<ul style="list-style-type: none"> <li>Powder coated Silversan Black</li> </ul>	<ul style="list-style-type: none"> <li>Powder coated (stock/non-stock colors)</li> <li>Stainless steel</li> </ul>
<b>BASE SUPPORT</b>	<sup>1</sup> <ul style="list-style-type: none"> <li>Casters w/ levelers (self-cont.)</li> </ul>	<ul style="list-style-type: none"> <li>Rail system for shims (remote)</li> </ul>
<b>BUMPER FRONT</b>	<ul style="list-style-type: none"> <li>1" Boston bumper (specify color)</li> </ul>	<ul style="list-style-type: none"> <li>1" Stainless steel plate rail bumper</li> </ul>
<b>DISPLAY</b>	<ul style="list-style-type: none"> <li>None</li> </ul>	<ul style="list-style-type: none"> <li>2"H Full depth display riser(s)</li> <li>4"H Full depth display riser(s)</li> </ul>
<b>END PANELS</b>	<ul style="list-style-type: none"> <li>Full w/stainless steel mirror interior</li> </ul>	<ul style="list-style-type: none"> <li>Cutaway w/glass</li> <li>None (specify per line-up)</li> </ul>
<b>REAR LEDGE</b>	<ul style="list-style-type: none"> <li>Black Sanalite®</li> </ul>	<ul style="list-style-type: none"> <li>Stainless steel</li> </ul>
<b>ELECTRICAL CONNECTION</b>	<ul style="list-style-type: none"> <li>6' Straight blade power cord (self-cont.)</li> </ul>	<ul style="list-style-type: none"> <li>6' Locking power cord (self-cont.)</li> <li>Electrical leads (remote)</li> </ul>
<b>REFRIGERATION</b>	<ul style="list-style-type: none"> <li>Breeze self-contained refrigeration</li> </ul>	<ul style="list-style-type: none"> <li>Remote DX refrigeration</li> <li>Remote w/thermostat, solenoid &amp; TXV</li> </ul>
<b>SENSOR</b>	<ul style="list-style-type: none"> <li>None</li> </ul>	<ul style="list-style-type: none"> <li>CPC discharge air sensor (remote)</li> </ul>
<b>ACCESSORIES</b>		<ul style="list-style-type: none"> <li>Clean Sweep® coil cleaner (self-cont.)</li> <li>Drain strainer</li> </ul>

Std Notes: 1 - N/A on 12ft

# Fusion

GLDSS 43"H Refrigerated Self-Service Case

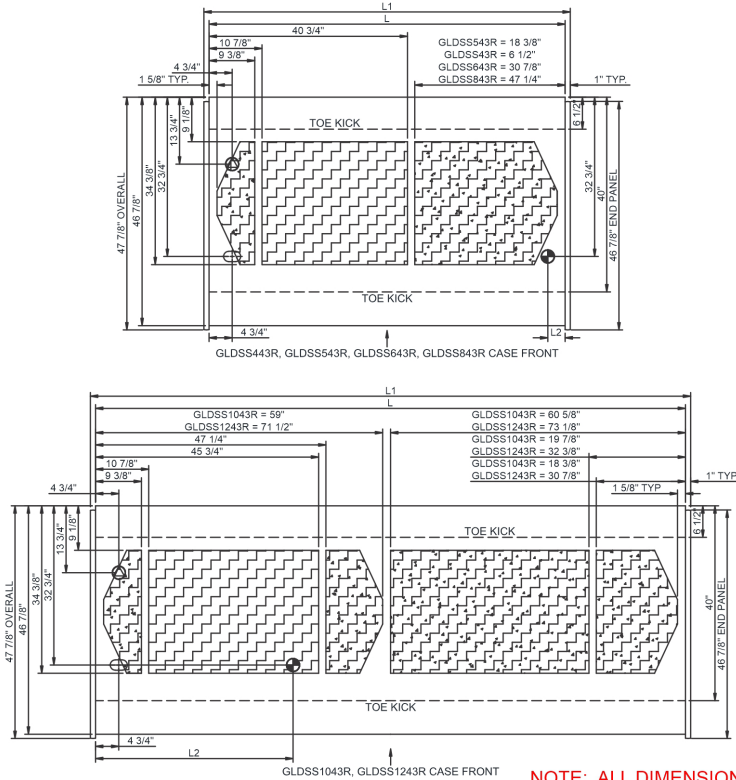
Structural Concepts®

DELIVERING FRESH. ALWAYS.™

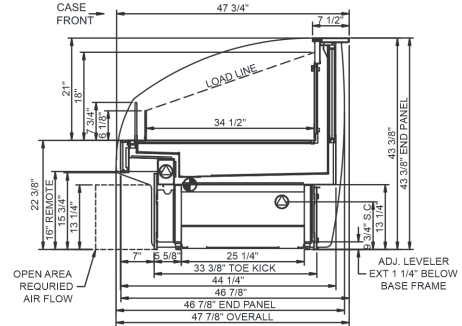
**Intended Environment:** Type I - Designed to operate in ambient conditions of 75°F with 55% relative humidity unless noted otherwise in system information below.

Zone	Intended Product To Be Displayed	Warmest Avg Prod Temp ° F
1	Packaged refrigerated products	40

PLAN VIEW



SIDE VIEW



NOTE: ALL DIMENSIONS APPROXIMATE

- ELECTRICAL JUNCTION BOX (SUPPLIED WITH 6\"/>

- REFRIGERATION LINE CONNECTION.
- REMOTE FLOOR SINK & UTILITIES ACCESS AREA.

- SELF-CONTAINED CASE SERVICE ACCESS AREA.
- DRY CASE SERVICE ACCESS AREA.

Model Technical Specifications														
Model	L"	L1"	L2"	System Circuit Volts			Phs	Freq	Amps ***	Watts	Wires	NEMA Plug	SST	Conv. Rack BTUH
GLDSS443R	48.75	50.75	3.50	Remote (DX)	Circuit #1	110-120	1	60	0.48	36	2+G	Leads Multiple	20.00	3283
				Remote (GLYCOL 35%)	Circuit #1	110-120	1	60	0.48	36	2+G	Leads Multiple	20.00	3283
				Self-Contained (R449A)	Circuit #1	110-120	1	60	14.57	1,280	2+G	5-20P or L5-20P	N/A	N/A
GLDSS543R	60.63	62.63	3.50	Remote (DX)	Circuit #1	110-120	1	60	1.07	85	2+G	Leads Multiple	20.00	4061
				Self-Contained (R404A)	Circuit #1	110-120	1	60	14.87	1,353	2+G	5-20P	N/A	N/A
				Self-Contained (R449A)	Circuit #1	110-120	1	60	14.81	1,293	2+G	5-20P	N/A	N/A
GLDSS643R	73.13	75.13	3.50	Remote (DX)	Circuit #1	110-120	1	60	1.14	93	2+G	Leads Single	20.00	4838
				Remote (GLYCOL 35%)	Circuit #1	110-120	1	60	1.14	93	2+G	Leads Single	20.00	4838
				Self-Contained (R449A)	Circuit #1	208-240	1	60	10.83	1,961	2+G	6-15P or L6-15P	N/A	N/A
GLDSS843R	97.50	99.50	3.50	Remote (DX)	Circuit #1	110-120	1	60	0.97	72	2+G	Leads Multiple	20.00	6480
				Self-Contained (R449A)	Circuit #1	208-240	1	60	11.77	1,854	2+G	6-15P or L6-15P	N/A	N/A
GLDSS1043R	121.13	123.13	40.50	Remote (DX)	Circuit #1	110-120	1	60	1.67	113	2+G	Leads Multiple	20.00	8122
				Remote (GLYCOL 35%)	Circuit #1	110-120	1	60	1.67	113	2+G	Leads Multiple	20.00	8122
GLDSS1243R	146.25	148.25	45.25	Remote (DX)	Circuit #1	110-120	1	60	1.45	108	2+G	Leads Multiple	24.00	9613
				Remote (GLYCOL 35%)	Circuit #1	110-120	1	60	1.45	108	2+G	Leads Multiple	20.00	9613

\*\*\* Does not include electric defrost on freezer models.

## Regulatory Approvals:

All Models  
 Accordance with AHRI Std 1200  
 ETL Listed to UL 471  
 ETL Listed to CAN/CSA 22.2 No. 120  
 ETL Sanitation to NSF/ANSI 7



In Accordance with  
**AHRI Std 1200**

**DOE 2017**  
 Energy Efficiency  
 Compliant

## Important Notes:

- 1) ELECTRICAL NOTE: If GFCI is required, a GFCI breaker MUST be used in lieu of a GFCI receptacle.
- 2) 50" minimum door entry clearance required (without shipping skid).
- 3) Units must be shimmed during installation to ensure the unit is level and plumb.

**⚠ WARNING:** This product can expose you to chemicals, including Urethane (Ethyl Carbamate), which are known to the State of California to cause cancer and birth defects or other reproductive harm. For more information go to [www.P65Warnings.ca.gov](http://www.P65Warnings.ca.gov).