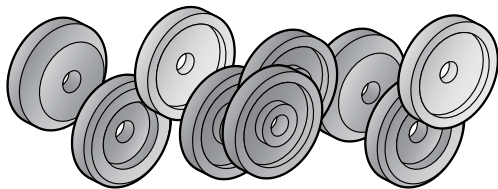


SLICER KNIFE SHARPENING STONES



High quality Alfa sharpening and truing stones are manufactured by skilled craftsmen in Germany. These stones are used as original equipment by many slicer manufacturers and will last longer and stay cleaner than other brands.



**ISO 9001
CERTIFIED**

ALFA # GLOBE # FITS GLOBE MODELS

GC9S	5	GC9, GC10
GC9 T	7	GC9, GC10
GC12 S	6	GC12
GC12 T	8	GC12
CM512 S	A320	GC512, GC12D
CM512 T	A330	GC512, GC12D
075 SG	214A	75, 150, 260, 285, 300, 400, 500, 500L, 610, 660, 685, 710, 715, 720, 725, 725L, 760, 765, 770, 775, 775L, 810, 815, 820, 825, 850LR, 875, 875RL, 2500, 2700, 3500, 3600, 3600N, 3750, 3850, 3850N, 3875V, 3975, 3975N, 4500, 4600, 4600N, 4750, 4850, 4875, 4913N, 4975, 4975N, and All "L" Models
075 SW	214-1	Same as above
075 T	213	Same as above
110 T*	C-808	110, 115, 210, 215

ALFA # BERKEL # FITS BERKEL MODELS

805 S*	04748-3	G, GA, GR, GT, GRX, GT, 805, 806
808 SG	3675-00076	807, 817, 808, 818, 909, 919, 834, 2340, 2350
808 SW	3675-00076W	Same as above
808 T	3675-00075	Same as above
825 S	825-00112	823, 825, 827 Sharpening and Truing Stone are the same
825 T	825-00112	Same as above
180 SG	B9-00612	115, 180, 910, 915, D, E, F, FA, GS
180 SW	B9-00612SW	Same as above
180 T	B9-0600	Same as above
180 TN	3675-00157	180 (New Style), 910, 915, D, E, F, FA, GS
170 T	3675-00084	Same as above and Model HD

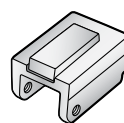
ALFA # BIZERBA # FITS BIZERBA MODELS

G12 S	60223401000	G12, G13, SE255, SE355, A330, SE8, SE12, VS12
G12 SW		SAME AS ABOVE
G12 T	60223401100	G12, SE225, SE12, SE12D, VS12
G13 T		G13, SE355, A330, SE8

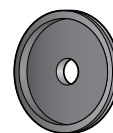
The above parts are sold by Alfa International as replacement parts for Hobart, Berkel, Globe, Univex and other Slicers. Alfa is not affiliated with these firms.

ALFA # HOBART # FITS HOBART MODELS

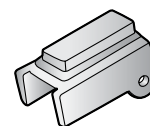
1612 SG	M-73851	111, 210, 211, 311, 411, 512, 512TMS, 1512, 1612, 1712, 1712R
1612 SW	M-73851	Same as above
1612 T	M-13201	512, 512TMS, 1512, 1612, 1712, 1712R
H-747	478747	Holder with Ceramic Truing Stone for 2612, 2712, 2812, 2912 Models
H-882	119882	Holder with Ceramic Truing Stone for 1812 and 1912 Models
H-691	439691	Steel Grinding Wheel w/ Diamond Edge** for 2000-series Models



H-747



H-691



H-882

ALFA # FITS UNIVEX MODELS

UN-50 S	6509, 7510, 7512, 8512, 9512
UN-50 T	Same as above

ALFA # FITS LAN ELEC (UK) MODELS

075 SG	Same as above (For Alfa L-4 Assembly)
--------	--

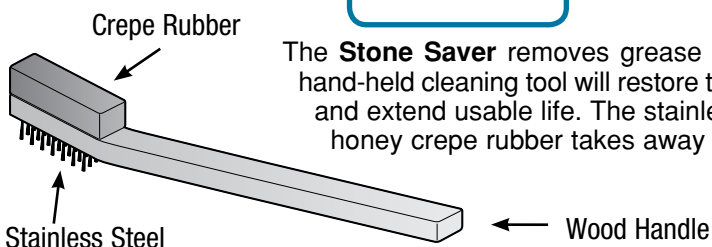
ALFA # FITS FLEETWOOD MODELS

312 S	BF300, 312, 312E, 412E
180 T	Same as above

S = Sharpening or Grinding (for outside or back of Blade)
 T = Truing or Honing (for front or inside of Blade)
 SG = Gray Sharpening Stone (For hard Chrome Blades)
 SW = White Sharpening Stone (For Stainless Steel Blades)

**ALFA
EXCLUSIVE**

STONE CLEANING TOOL



The **Stone Saver** removes grease and glaze from Slicer Stones in seconds. This simple hand-held cleaning tool will restore the surface of any grinding stone to improve performance and extend usable life. The stainless steel bristles remove heavy accumulation, while the honey crepe rubber takes away finer residues. Made in USA.

ALFA # DESCRIPTION

STONE-CT	Stone Cleaning Brush
----------	----------------------