

Pizza Prep Tables with Drawers FPT D Series



FPT-46-D2

FPT-67-D2
FPT-67-D4

FPT-93-D2
FPT-93-D4
FPT-93-D6

Item # _____

Standard Features

- Our pizza units are designed with durability and strength that you will not find in any other products in its class.
- All stainless steel interior and exterior construction for a clean & safe food environment. Coved corner floor to meet NSF requirements.
- Drawers: Heavy duty drawer slides with gentle self closing mechanism, full length recessed drawer handles; accommodate (2) 12" x 20" x 6" deep pans per drawer (pans sold separately).
- Doors: Heavy duty stainless steel doors with full length recessed door handles; interior instep design for added insulation and protection of door gaskets.
- With innovative and eco-friendly technology, Fagor utilizes R-290 Hydrocarbon designed to meet DOE's Energy Conservation standards with very low contribution to global warming (ODP-0) (GWP-3).
- Forced air design underneath the pans to keep products fresh and maintain temperature at 33° - 41 °F in food pans and cabinet interior. Complies with NSF7 standards for food product safety.
- Insulated lid keeps pan temperature cold and minimizes condensation. Removable for easy cleaning.
- Side breathing refrigeration system for built-in applications.
- 19" full length removable and reversible white polyethylene cutting board.



FPT-46-D2



FPT-67-D4



FPT-93-D2

Options & Accessories

- 6" adjustable legs (set of 4)
- Additional epoxy coated shelves with channels
- Universal tray slides (pair)
- 220 Voltss / 50 cycles / 1 phase



*Conforms to UL & NSF-7 standards

Pizza Tables - Drawers	Model	Doors	Drawers	Shelves	Top Pans	Capacity Cu. Ft.	Amps	HP	Volts	Cabinet Dimensions W / D / H			Shipping (Wt. Cubes)	
	FPT-46-2D	0	2	6	6	9.9	3.0	1/3	115	46"	32-1/2"	43-7/8"	368	63
FPT-67-2D	1	2	9	9	18.6	3.0	1/3	115	67-1/4"	32-1/2"	43-7/8"	486	73	
FPT-67-4D	0	4	9	9	18.6	3.0	1/3	115	67-1/4"	32-1/2"	43-7/8"	526	73	
FPT-93-2D	2	2	12	12	26.5	3.0	1/3	115	93-1/8"	32-1/2"	43-7/8"	596	92	
FPT-93-4D	1	4	12	12	26.5	3.0	1/3	115	93-1/8"	32-1/2"	43-7/8"	636	92	
FPT-93-6D	0	6	12	12	26.5	3.0	1/3	115	93-1/8"	32-1/2"	43-7/8"	676	92	

* Depth does not include 1" bumper. ** Height does not include 5" casters (6" overall) or 6" optional legs.

JULY 2021

13105 NW 47th Ave. Opa-Locka FL 33054
Tollfree: (866) 463 2467 Ph: (305) 779 0170 Fax: (305) 779 0173
info@fagorcommercial.com
www.fagorcommercial.com

TOGETHER WE EVOLVE

Pizza Prep Tables with Drawers

FPT D Series



Specifications

Construction

Heavy duty stainless steel exterior top, front and sides. Galvanized back panel. Interior completely constructed of heavy duty stainless steel with coved corner floor. Aluminum split wall between the food pans and the interior cavity.

Doors: heavy duty stainless steel exterior and interior, in-step design with hinged solid doors and positive seal. Self closing mechanism and 120° stay open feature.

Drawers: heavy duty stainless steel with heavy duty drawer slides. Full extension drawers accommodate: (2) 12" x 20" x 8" deep pan capacity (pans sold separately).

Doors and Drawers: openings have a plastic breaker strips to retard condensate formation. Provided with magnetic door/drawer gaskets, removable without tools. Recessed full length handles.

Refrigeration System

Self-contained capillary tube system using environmentally friendly (CFC Free) R-290 refrigerant. Side mounted compressor on right side for built-in applications. Evaporator coil is mounted to interior top panel encased in stainless steel. Large fan motor and fan blades for better air flow.

Tables are designed to maintain temperatures between 33 °F to 38 °F in the interior cabinet and 41 °F in the top rail.

Features

19" wide removable and reversible cutting board, NSF approved white polyethylene, ½ deep. Stainless steel insulated top lid keeps pan contents colder. Durable, long lasting and removable for easy cleaning.

Comes standard with standard-1/3 size, clear polycarbonate, NSF approved 6" deep food pans.

Drawers come standard with (2) pan dividers.

Shelving

(2) Epoxy coated shelving per door with channel slides for supports. Adjustable in 2" increments per shelf.

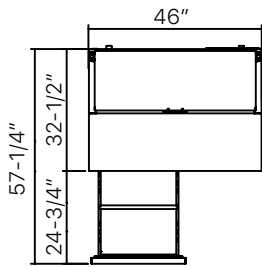
Others

Unit is supplied standard with a 8' cord and plug (Nema 5-15p). Standard with 5" diameter casters, front two with brakes.

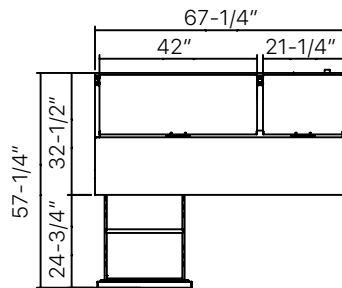
Warranty

3 year parts and labor warranty plus 2 additional year compressor warranty. (Continental U.S.A. & Canada only).

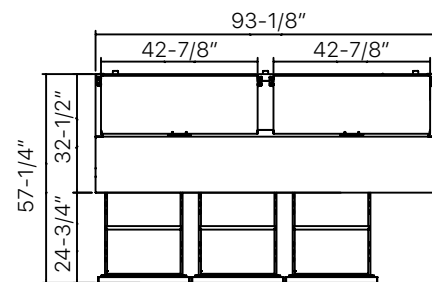
FPT-46-D2 Top View



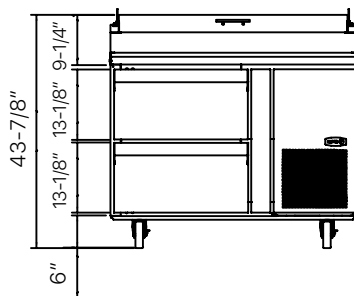
FPT-67-D4 Top View



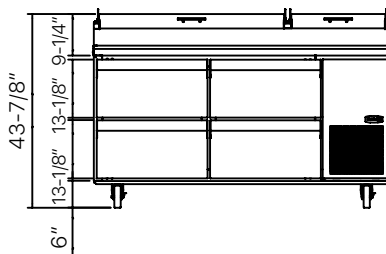
FPT-93-D6 Top View



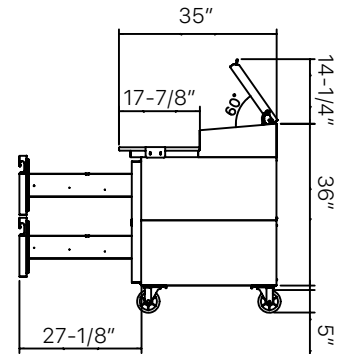
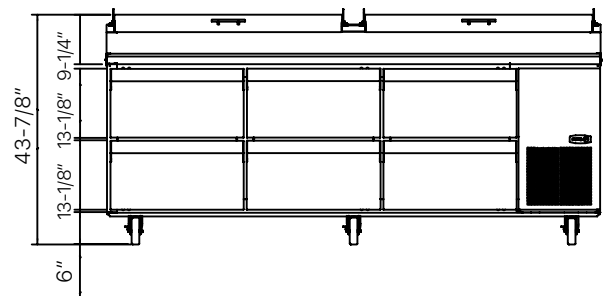
FPT-46-D2 Front View



FPT-67-D4 Front View



FPT-93-D6 Front View



Common Side View

The manufacturer reserves the rights to modify materials and specifications without notice.