



# SPECIFICATION SHEET

|             |       |      |       |
|-------------|-------|------|-------|
| Model #:    | _____ | Qty: | _____ |
| Project #:  | _____ |      |       |
| Consultant: | _____ |      |       |

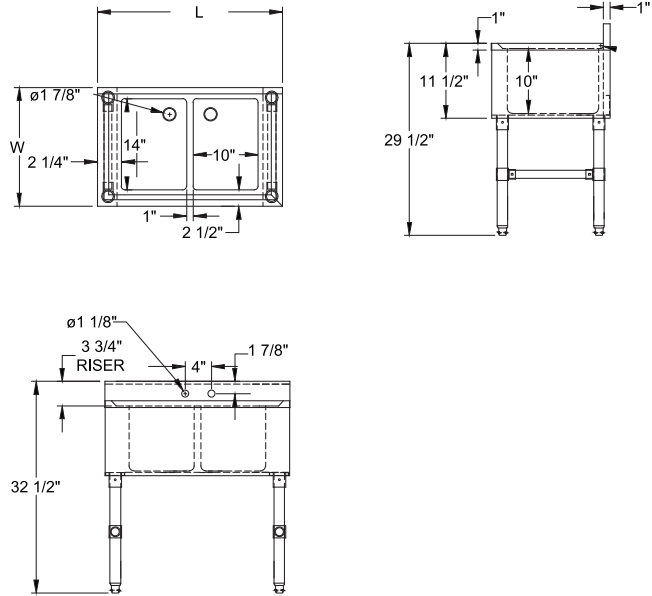
QUALITY FOOD SERVICE EQUIPMENT

## SLIM UNDERBAR SINKS



## DIMENSIONS

wall mount - no drainboard



## MATERIAL

- ◆ 18GA 300 stainless steel fabricated
- ◆ Stainless steel apron on front and sides
- ◆ Stainless steel legs & side bracing
- ◆ Plastic bullet feet

## FEATURES

- ◆ 3" H backsplash
- ◆ 4" on center faucet holes
- ◆ Raised marine edge on front & sides
- ◆ Includes 1-1/2" drains
- ◆ Includes removable overflow stand pipes
- ◆ Side bracing for reinforced support
- ◆ Adjustable bullet feet

| Model#         | # of Bowls | Bowl Size<br>LxWxH | Length | Width   |
|----------------|------------|--------------------|--------|---------|
| UW-2-101410-24 | 2          | 10" X 14" X 10"    | 24"    | 18-1/4" |
| UW-3-101410-36 | 3          | 10" X 14" X 10"    | 36"    | 18-1/4" |
| UW-4-101410-48 | 4          | 10" X 14" X 10"    | 48"    | 18-1/4" |

(609) 642-8389 | sales@nbrequipment.com | www.nbrequipment.com