

## "WCO" WALL CABINETS

### *Stainless Steel w/Open Design*

#### FEATURES:

- Type 300 Stainless Steel With #4 Polish Satin Finish
- Includes Fixed Shelf
- Open Design With Single Mid Shelf
- Mounting Rail On Top Back For Ease Of Mounting To Wall

#### SPECIFICATIONS:

- Stainless Steel Cabinet TIG Welded, Exposed Welds Are Polished To Match Adjacent Surface
- 18GA Type 300 Stainless Steel With #4 Polish, Satin Finish



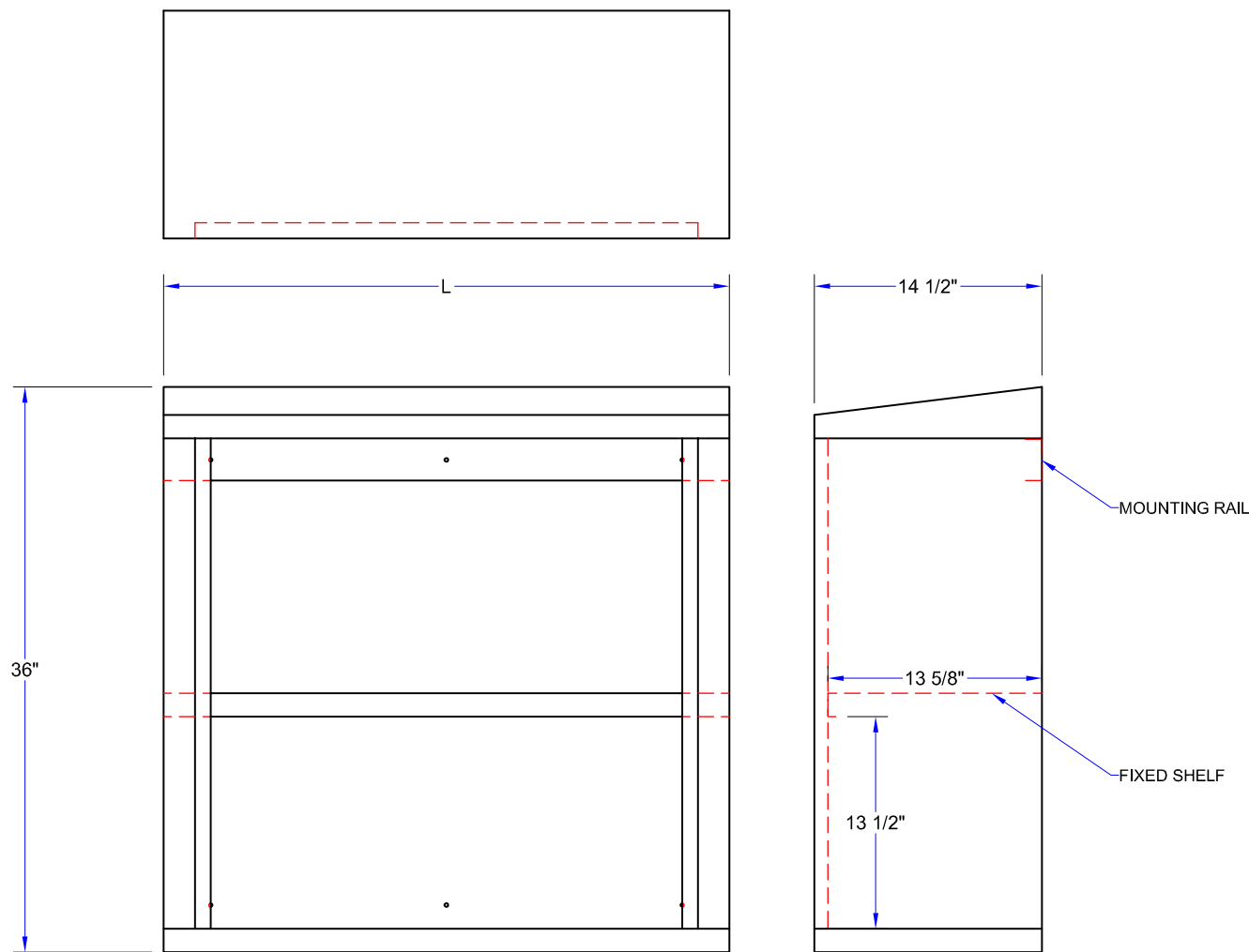
WCO-48  
W/INTEGRAL MID SHELF

## "WCO" STAINLESS STEEL WALL CABINETS

MODEL	SIZE (L X W X H)	WEIGHT (LBS)
WCO-36	36"x14-1/2"x36"	67
WCO-48	48"x14-1/2"x36"	83
WCO-60	60"x14-1/2"x36"	99

ALL DIMENSIONS ARE TYPICAL. TOLERANCE +/- .500". JOHN BOOS & CO. RESERVES THE RIGHT TO CHANGE SPECIFICATIONS WITHOUT NOTICE.

# DETAILED SPECIFICATIONS



## "WCO" STAINLESS STEEL WALL CABINETS

MODEL	SIZE (L X W X H)	WEIGHT (LBS)
WCO-36	36"x14-1/2"x36"	67
WCO-48	48"x14-1/2"x36"	83
WCO-60	60"x14-1/2"x36"	99

ALL DIMENSIONS ARE TYPICAL. TOLERANCE +/- .500". JOHN BOOS & CO. RESERVES THE RIGHT TO CHANGE SPECIFICATIONS WITHOUT NOTICE.