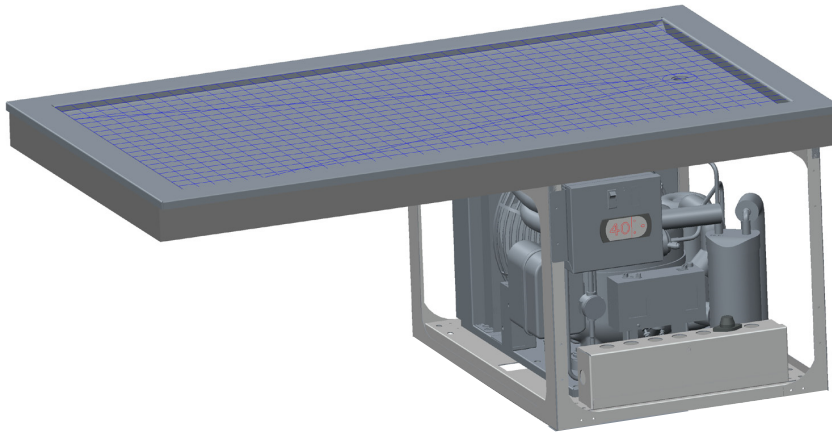


Project: _____

Item: _____

Quantity: _____

Date: _____



Models Length

- DI-1826-CFT-T 30"
- DI-2025-CFT-T 29"
- DI-2038-CFT-T 42"
- DI-2051-CFT-T 55"
- DI-2064-CFT-T 68"
- DI-2077-CFT-T 81"

DI-2054-CFT-T



- Use in high volume operations
- Perfect for use with portioned items
- Frost top maintains food temperature for up to 3 hours
- Sanitary easy to clean stainless surface
- Optional black ceramic glass surface in lieu of stainless

Standard Features

- ✓ Full sealing gasket
- ✓ 6 standard sizes
- ✓ 6' cord and plug
- ✓ 120V, 60, 1PH
- ✓ T-Turn down edge
- ✓ Rubber bar mat included

Optional Features (specify)

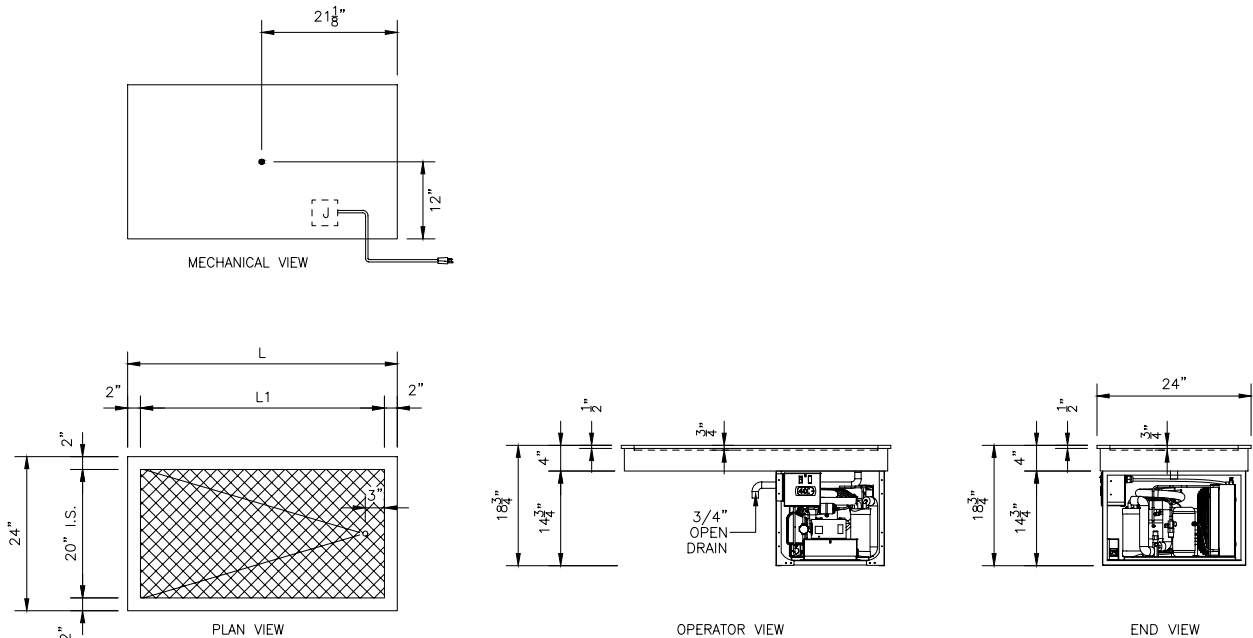
- Hugged edge (denote "H" in suffix)
- Skirt mounted control adapter (must specify)
- Other voltage, phase, cycle (specify _____)

REV 5/26/21



LTI, Inc.
1947 Bill Casey Parkway (888) 584-2722
Jonesboro, GA 30236 lowtempind.com

Approvals: _____



* Note width of 18 O.A flange of 22

Model	L	L1	Cut-out size	H.P.	Volts	Fans	Amps (120V)	NEMA Plug
DI-1826-CFT-T *	30"	26"	21 1/4" x 29 1/4"	1/3	120V/1	1	7.5	5-15
DI-2025-CFT-T	29"	25"	23 1/4" x 28 1/4"	1/3	120V/1	1	7.5	5-15
DI-2038-CFT-T	42"	38"	23 1/4" x 41 1/4"	1/3	120V/1	2	7.5	5-15
DI-2051-CFT-T	55"	51"	23 1/4" x 54 1/4"	1/3	120V/1	2	7.5	5-15
DI-2064-CFT-T	68"	64"	23 1/4" x 67 1/4"	1/3	120V/1	3	7.5	5-15
DI-2077-CFT-T	81"	77"	23 1/4" x 80 1/4"	1/3	120V/1	3	7.5	5-15

Specifications

Frost top unit to be made up of a 14 gauge stainless steel watertight pan with a 5/8" recess around the perimeter. Unit to have a fully welded 2" flange with a 1/2" turn down (standard). Recess shall accomodate a removable washable bar mat to keep product from freezing to the pan.

To have a continuous refrigeration coil bonded to the underside, fully insulated with urethane insulation. To include a full perimeter breaker strip, and a 3/4" open brass drain extended to a shut-off valve below.

Temperature shall be maintained by a self-contained, fully-hermetic type R-134A condensing unit.

Adequate ventilation must be provided to ensure proper operations of this unit. A minimum louvered opening of 14" x 14" with thru air flow is recommended. A minimum of 330 cfm air flow

across the condensing unit area is recommended. Failure to provide adequate ventilation will void manufacturer's warranty. Customer side access is required for service of unit.

Approval/Submittal (signature required)

Model # _____

Flange Edge Detail:

Turned (T) _____ Hugged(H) _____

(T)= 1/2" 90° turn down

(H)= 14 gauge thickness

Compressor standard location is right end (from control side).

Adherence to LTI installation instructions is required. Failure to do so may void the warranty.

Signature _____

Date _____

We reserve the right to change specifications and product design without notice. Such revisions do not entitle the buyer to corresponding changes, improvements, additions or replacement for previously purchased equipment.

All equipment to be built in accordance with the Underwriters Laboratories, Inc. and the National Sanitation Foundation, Inc. standards and shall bear the Underwriters Laboratories, Inc. listing label for safety and the Underwriters Laboratories classification label for sanitation.

