



A family company manufacturing in the USA

[www.glastender.com](http://www.glastender.com)



LPDS24  
with stainless steel door  
and top



**Intertek**

4004503

Conforms to NSF/ANSI STD 2

Project: _____	AIA# _____
Item #: _____ Qty: _____	SIS# _____
Model #: _____	

## Low Profile Dry Storage Cabinet

**LPDS**

LPDS24, LPDS40, LPDS48, LPDS60,  
LPDS72, LPDS80, LPDS96

### Configurable Options

**Door Style & Finish** (*specify  
per door section*):

- Black vinyl-clad
- Stainless steel
- Jeweled stainless
- Laminated
- Unlaminated

**Door Hinge Location:**

- Left or Right

**Door Handle:**

- Signature
- Pull-tab
- Tube

**Top Style:**

- No finished top
- Stainless top
- Laminated top

**Left and Right Side Finish:**

- Black vinyl-clad
- Stainless steel
- Laminated

### Standard Features

- Locking door
- Galvanized steel interior
- One adjustable, coated-wire shelf
- Eco-friendly, foamed-in-place insulated sides and door
- Black vinyl-clad steel exterior front and sides

To view underbar installation instructions, please visit: [https://www.glastender.com/PDF/F-750-165\\_Underbar\\_Installation\\_Instructions.pdf](https://www.glastender.com/PDF/F-750-165_Underbar_Installation_Instructions.pdf)  
To view cleaning and care instructions, please visit: [https://www.glastender.com/PDF/F-423-011\\_ss\\_clean\\_care.pdf](https://www.glastender.com/PDF/F-423-011_ss_clean_care.pdf)

**Glastender, Inc.** • 5400 N Michigan Rd • Saginaw, MI • 48604-9780  
989.752.4275 • 800.748.0423 • Fax 989.752.4444  
[www.glastender.com](http://www.glastender.com)

Specifications subject to change without notice. For current specifications please visit our website.

Approval/Notes:

## Low Profile Dry Storage Cabinet

### Specifications

		LPDS24	LPDS40	LPDS48	LPDS60	LPDS72	LPDS80	LPDS96
Dimensions	Length	24"	40"	48"	60"	72"	80"	96"
	Number of Sections	1	2	2	3	3	4	4
	Door Opening	20"	16"	20"	16"	20"	16"	20"
Weight Bearing Capacity		Countertops and other accessories should not exceed 500 pounds per door						

#### Materials

- 22 gauge galvanized steel parts include: interior walls and back
- 22 gauge black vinyl-clad parts include: sides and standard doors
- 18 gauge stainless steel parts include: top front channel and front leg channel
- 16 gauge stainless steel parts include: legs
- 16 gauge galvanized steel parts include: rear leg channel, floor, and shelf
- 16 gauge zinc plated CR steel parts include: leg sockets
- 12 gauge stainless steel parts include: hinges, hinge brackets, and lock brackets



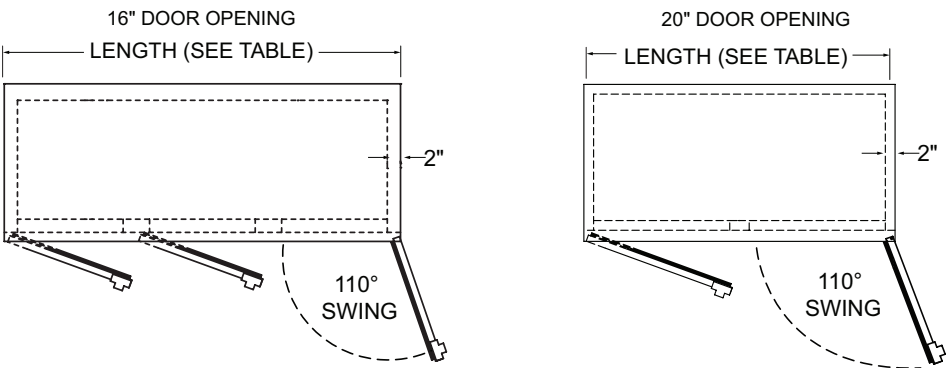
5400 N Michigan Rd • Saginaw, MI • 48604-9780  
989.752.4275 • 800.748.0423 • Fax 989.752.4444  
www.glastender.com

Printed in USA

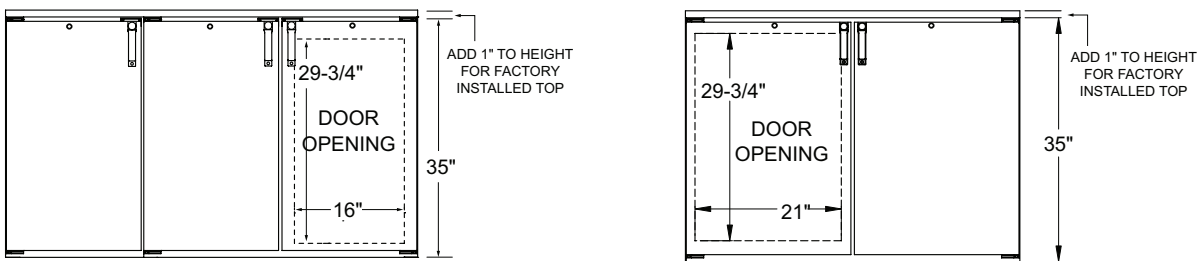
# 24" Low Profile Dry Storage Cabinet

## Drawings

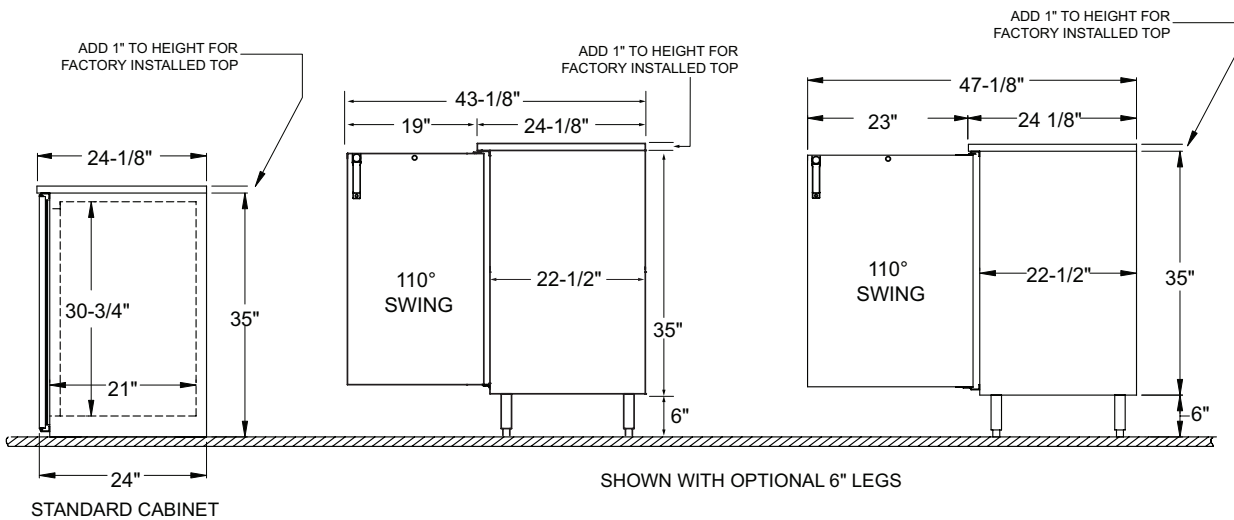
### PLAN VIEW



### FRONT VIEW



### SIDE VIEWS



OPTIONAL LEGS  
AND CASTERS



5400 N Michigan Rd • Saginaw, MI • 48604-9780  
989.752.4275 • 800.748.0423 • Fax 989.752.4444  
www.glastender.com

Printed in USA