



# BEVERAGE-AIR

Project: _____	AIA#
Item: _____	
Location: _____	SIS#
Approved: _____	

**MMF44HC GLASS DOOR MERCHANDISER SERIES- ELECTRONIC LOCK**

## MARKETMAX FREEZER WITH ELECTRONIC LOCK

MMF44HC White Hinged Double Glass Door  
Hydrocarbon Series

**MODEL:**  
MMF44HC-1-W-IQ



**5 Year Parts/Labor Warranty Available**  
**7 Year Compressor Warranty**

### CABINET CONSTRUCTION

- Exterior features durable white painted steel
- Heavy duty interior construction includes white coated steel walls
- Modern one-piece grille
- Full electronic control
- Freezers has triple pane lowE argon filled glass doors
- Self-closing doors with 120° stay-open feature
- Snap-in gaskets, easy to remove for cleaning or replacement
- LED lighting
- Brightly lit sign panel
- Ten (10) heavy duty epoxy coated wire shelves
- Four (4) shelf clips included per shelf
- Self-contained bottom mount refrigeration system
- Leveling feet standard

### OPTIONS & ACCESSORIES

- 3 Year parts/labor standard, additional 2 year warranty available
- Stainless steel or black exterior
- Stainless steel or black interior
- Shelves black or white
- Shelf clips
- Flow track
- Gravity flo kits
- Novelty basket
- Price tag molding
- Custom sign panel
- Custom graphics
- 3" or 6" Casters
- 6" Legs or seismic/flanged legs
- Remote option\* (see note on back on page)

### ELECTRONIC SMART LOCK FEATURES

- Secure temperature-sensitive product for worry-free operation
- LED indicator to quickly view status
- Easy-access test switch for health inspectors
- Built-in safety feature allow escape in case of accidental lock-in

### REFRIGERATION SYSTEM

- Uses environmentally friendly, energy efficient R290 refrigerant, and meets all regulatory requirements for CARB, SNAP, DOE & more
- Electric defrost with hot gas condensate evaporation
- Epoxy coated evaporator coil
- Maintains product temperatures down to -10°F



Please verify qualifying units by visiting:  
[www.energystar.gov/cfs](http://www.energystar.gov/cfs)



3779 Champion Blvd., Winston-Salem, NC 27105  
1-888-845-9800 Fax: 1-336-245-6453  
Beverage-Air.com Sales@bevair.com



# BEVERAGE-AIR

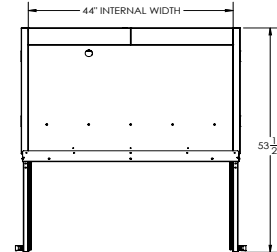
MODEL	MMF44HC-1-W-IQ
<b>EXTERNAL DIMENSIONAL DATA</b>	
Width Overall	47"
Depth Overall with Handle	33 1/2"
Height Overall	78"
Number of Doors	2
Depth with Door Open 90°	53 1/2"
Door Openings (in)	20 1/8" x 52 5/8"
<b>INTERNAL DIMENSIONAL DATA</b>	
NET Capacity (cubic ft.)	44.0
Internal Width Overall (in)	44"
Internal Depth Overall (in)	26"
Internal Height Overall (in)	61 5/8"
Internal Height Useable (in)	55"
Number of Shelves	10
<b>ELECTRICAL DATA</b>	
Full Load Amperes	13.9
<b>REFRIGERATION DATA</b>	
Horsepower	2X 3/4
Capacity (BTU/Hr)	2X 2097
Heat Rejection (BTU/Hr)	6291
Charge (lbs/grams)	2X .2094/95
<b>WEIGHT DATA</b>	
Gross Weight - Crated	570 lbs
Height - Crated	82"
Width - Crated	49"
Depth - Crated	36"

\*NOTE: Remote units are field wired and comes with 6" legs.  
Refrigerant must be specified at time of order.

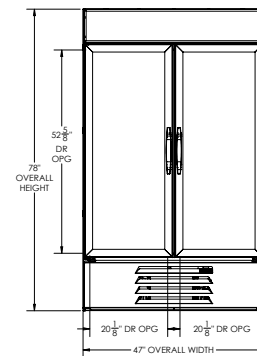
## Glass Door Merchandisers - Electronic Lock Model: MMF44HC-1-W-IQ

### Model Views

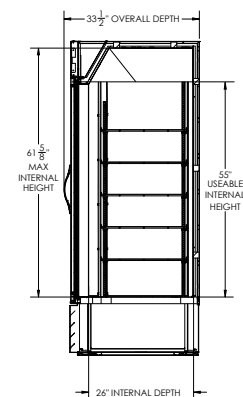
Required Clearance: Top 6", Rear 3"



### PLAN VIEW



### ELEVATION VIEW



### SIDE VIEW



### ELECTRICAL CONNECTION

115/60/1  
(2) NEMA 5-20P Unit pre-wired at factory and include 8' long cord and plug set.