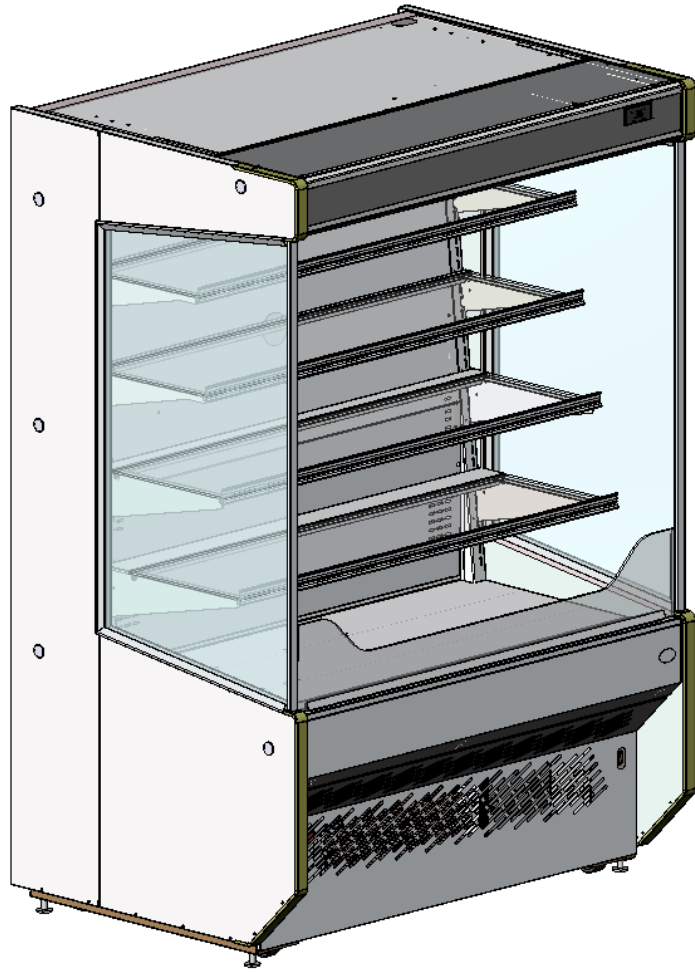


RSC Self Contained - Specifications



Models		RSC3SH and RSC4SH
Environmental Conditions		NSF/ANSI 7 Type II Standard, maximum indoor 80°F & relative humidity 55%
External Dimensions	Width	RSC3SH: 37.9" RSC4SH: 49.9"
	Depth	36.1"
	Height	75.6"
Structure	Outer / Inner Box	Powder coated steel / zinc coated steel
	Insulation	Rigid insulating foam
Color (Interior/Exterior)		Standard: Black/Black Optional: Black/Stainless
Shelves		4 shelves, adjustable powder coated steel frame, glass inserts standard
Shelf Load Limit		100 lbs. per shelf (glass inserts); 150 lbs. per shelf (with optional steel inserts)
Electrical		115 VAC / 60 Hz / 20 Amp, 5-20 Plug
Fan Motors		ECM high efficiency
Lighting		LED
Refrigerant		R290
Evaporator		Fin tube type
Compressors		2x 2-3/4 HP Reciprocating
Controller		Digital programmable controller
Casters		Four 4" Casters
Drainpipe		1/2" NPT Female Connector
Thermometer		NSF-approved thermometer
Internal Volume		RSC3SH: 17.3 ft ³ ; RSC4SH 22.8 ft ³
Weight		RSC3SH: 480 lbs.; RSC4SH: 550 lbs.
Noise		Less than 65 dB at 4 ft.
Agency Approvals		ETL File #4007858 Conforms to ANSI/UL 471, NSF Conforms to ANSI Std 7 Type II
Option		Manual Night Curtain
Accessories		Evapoway Condensate Kit Condensate Pump Steel Shelf Inserts



Manufactured at SandenVendo America, Inc. in Dallas, TX