

ITEM #: \_\_\_\_\_ QTY: \_\_\_\_\_  
 MODEL #: \_\_\_\_\_  
 PROJECT NAME: \_\_\_\_\_

031618

3601 S. Banker St. Effingham, IL 62401 • P.O. BOX 609 • Ph: (888) 431-2667 • Fax: (800) 433-2667

## **"EUBDS-1218" UNDERBAR DUMP SINK**

### **FEATURES:**

- FABRICATED 18 GAUGE STAINLESS STEEL SINK BOWL.  
10" X 14" X 6" DEEP BOWL
- 4" ON-CENTER SPLASH MOUNT FAUCET HOLES
- FAUCET NOT INCLUDED
- INCLUDES 1-7/8" DRAIN WITH BASKET
- RAISED MARINE EDGE ON FRONT AND SIDES
- STAINLESS STEEL LEGS WITH ADJUSTABLE BULLET FOOT

### **MATERIAL:**

- TOP: 18 GAUGE TYPE 300 STAINLESS STEEL WITH #4 POLISH, SATIN FINISH
- BODY: 18 GAUGE TYPE 300 STAINLESS STEEL WITH #4 POLISH, SATIN FINISH
- LEGS: STAINLESS STEEL WITH ADJUSTABLE BULLET FOOT
- LEGS: STAINLESS STEEL
- FEET: PLASTIC

### **CONSTRUCTION:**

- TOP: STAINLESS STEEL TOPS ARE TIG WELDED, EXPOSED WELDS ARE POLISHED TO MATCH ADJACENT SURFACE #4 POLISHED, SATIN FINISH

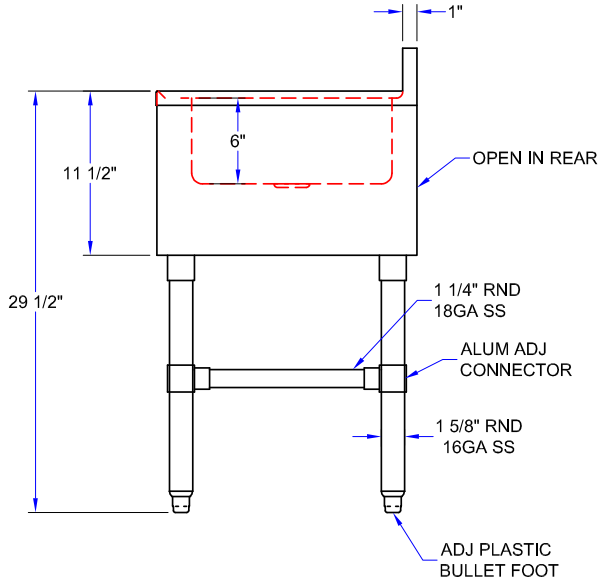
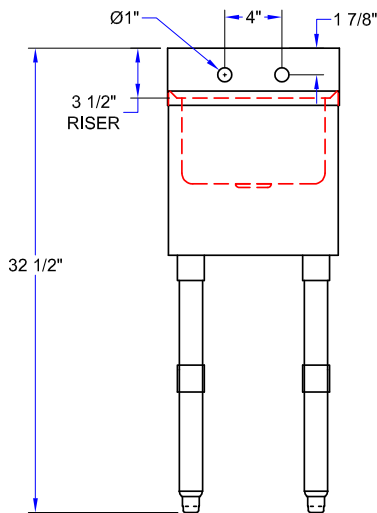
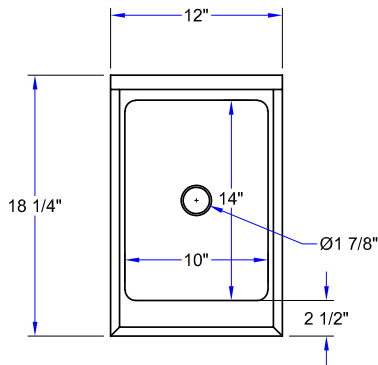


### **"EUBDS-1218" UNDERBAR DUMP SINK**

MODEL #	QTY
EUBDS-1218 *	

**\* REQUIRES SHALLOW SPLASH MOUNT FAUCET**

# DETAILED SPECIFICATIONS



## "EUBDS-1218" UNDERBAR DUMP SINK

MODEL #	LENGTH	WIDTH	HEIGHT	WT. (LBS)
EUBDS-1218 *	12"	18"	29-1/2"	29

\* REQUIRES SHALLOW SPLASH MOUNT FAUCET  
WEIGHTS ARE SUBJECT TO ADDITIONAL PACKAGING

SOME UNITS SHIP UNASSEMBLED FOR REDUCED SHIPPING COST. ALL DIMENSIONS ARE TYPICAL. TOLERANCE +/- .500"  
John Boos & Co. is constantly engaged in a program of improving products and therefore reserves the right to change specifications without prior notice.



Boos  
lock

AQ AutoQuotes

3601 S. Banker St. • Effingham, IL 62401 • PO BOX 609 • quotes@johnboos.com

www.johnboos.com

121817

21