



Gourmet 5T Electric Combi Oven

Trays	5TGN 1/1
Outside dimension	28.1" W x 31.5" D x 26.4" H (715 L x 800 P x 670 H mm)
Tray distance	2.6" (65 mm)
Power	8.5 kW
Weight	134.5 lbs (61 Kg)
Max temperature	518° F (270° C)
Power supply	220V / 60 Hz / 3 or 1 ph

Equipment

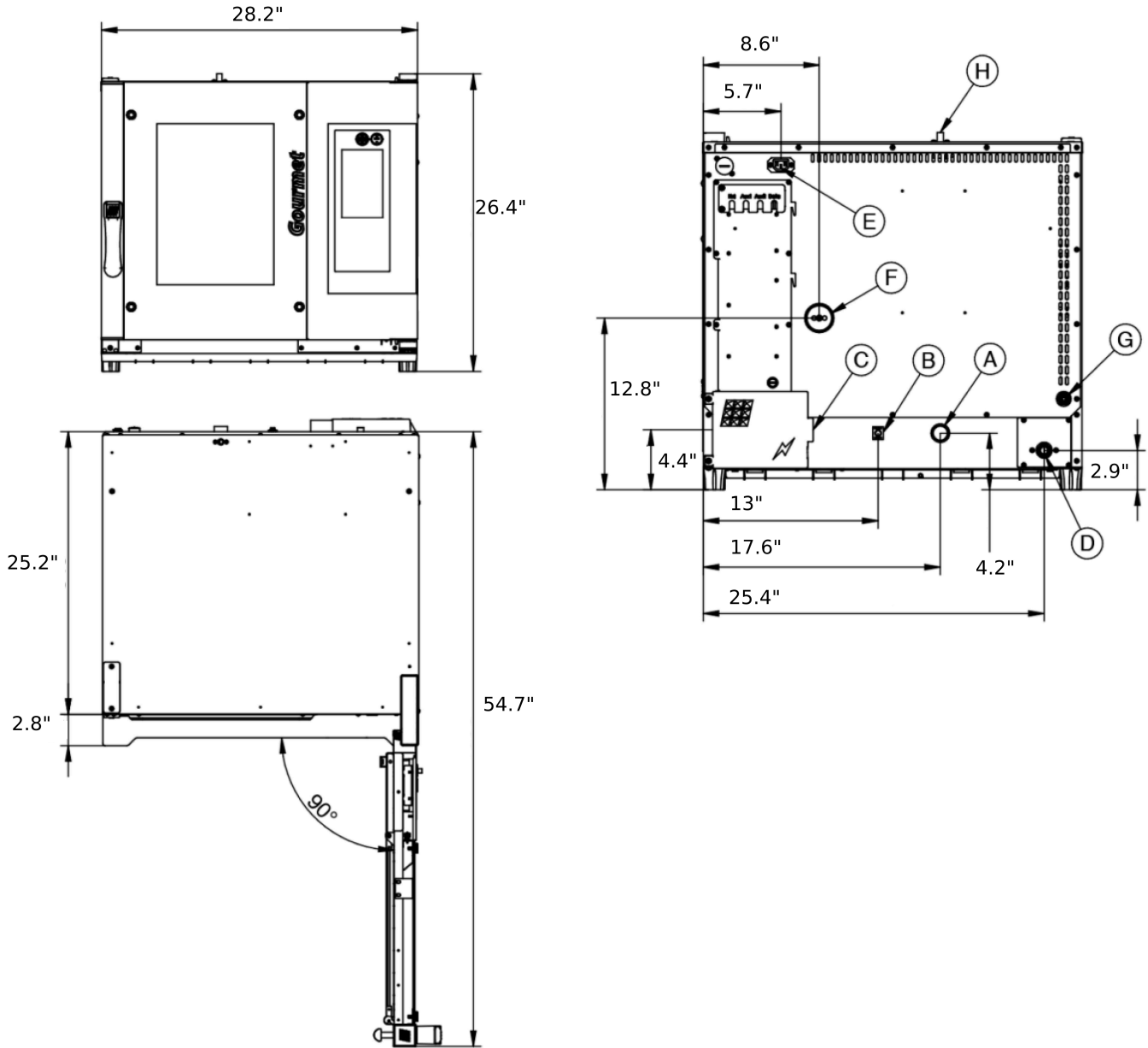
Led illumination	BakePOINT Multipoint core probe	BakeAIR multi-fan system
Double low emissive glass	High-performance thermal insulation	USB connection
Blue LED for chamber cleaning check	Water collection tray	Usable also with GN2/3 and GN1/2 trays
Set-up for BakeHIN vacuum core probe	Five fan speeds and semi-static cooking	Nine cooking modes
Automatic chimney opening BakeDRY	Program blocking with password	Rounded baking chamber
Modularity	CE Certificate	Automatic control of dry/steam balance inside the chamber
Steam control in percentage BakeSTEAM	Automatic control of the cooking level and load	Multi-timer function for multiple and mixed cooking
Storage, viewing* and exportation of cooking data (haccp)	Customized programs mode	Manual mode
Preset programs mode	EAC certification	Automatic preheating
Cooling program	Delayed start programming	Delayed cooking programming
Cooking chamber automatic cooling	Pre-loaded and online cookbook	Automatic detection and errors report
Overlap option	Openable inner glass for easy cleaning	Fan inversion, speed control and motor brake
Adaptive steam pressure and chamber saturation control		

Options

BakeHIN vacuum core probe	Ethernet connection and wi-fi set-up BakeNET	Heart probe MultiBakePOINT
BakeCLEAN automatic washing system	Fat collection BakeFAT	Safety rinse
Left door opening		

Gourmet 5T Master Pro

Electrical Supply



Legend

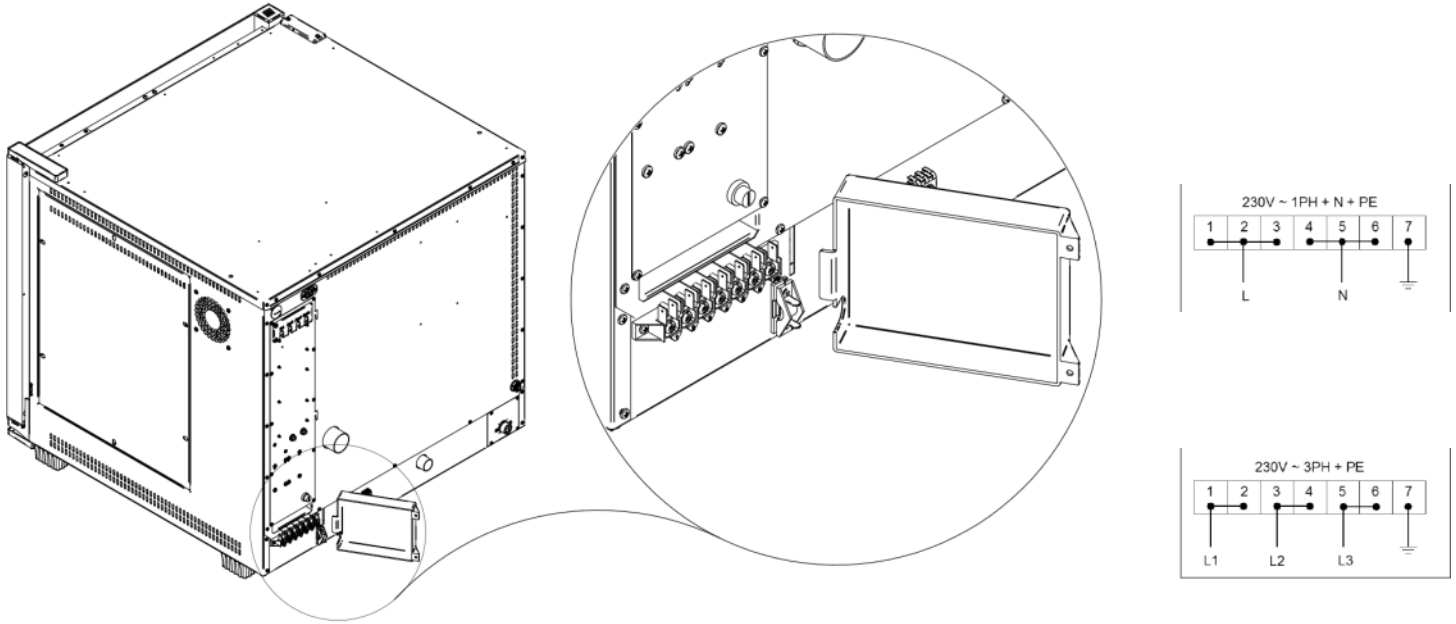
- A - Drain liquid Ø 30mm
- B - Equipotential terminal comb
- C - Electric supply
- D - Water inlet 3/4"
- E - Extracting hood supply
- F - Steam exhaust Ø 50mm

- G - Inlet for washing kit Ø 8mm
- H - Depressurizer Ø 12mm

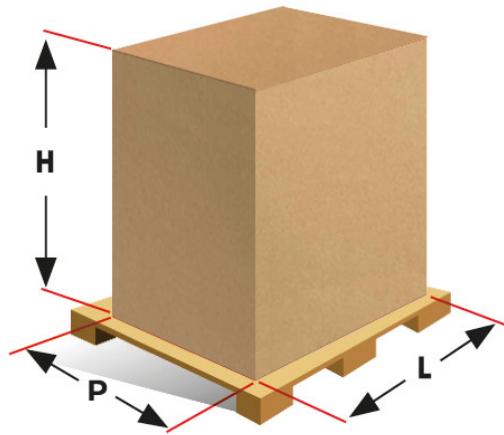
Gourmet 5T Master Pro

Electrical Supply

Supply and Connections



Packaging



Packing size:	31" W x 34" D x 33" H (790 L x 870 P x 830 H mm)
Net weight:	134.5 lbs (61 Kg)
Gross weight:	163.1 lbs (74 Kg)