



Chef Tables - Stainless Steel Top with 5" Riser

Stainless Steel Cabinet Base Tables with Sliding Doors

Certifications:



Features:

- 1 5/8" x 6" Straight S/S Leg
- Sliding Doors
- 5" Riser
- 96" Units have a Center Mullion with Two Sets of 48" Doors
- Legs Adjust 1" in Height
- Extra Supporting "C" Channels
- Casters Available



Material:

- T-304 14 ga. Stainless Steel Top
- T-304 18 ga. Stainless Steel Body
- Stainless Steel Legs & Feet

Options:

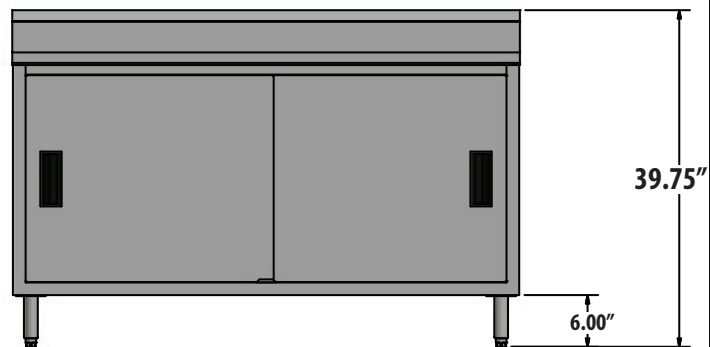
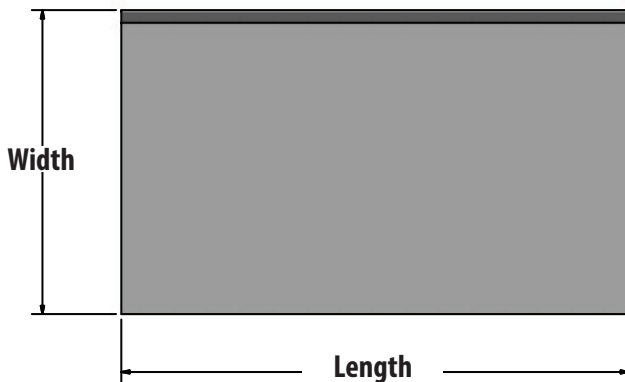
- Adjustable Shelf



Single Sided:

Sliding Door	Unit Size (W x L x H)
CSTR5-3648S	36" x 48" x 39.75"
CSTR5-3660S	36" x 60" x 39.75"
CSTR5-3672S	36" x 72" x 39.75"
CSTR5-3696S*	36" x 96" x 39.75"

*96" Has a Center Mullion with Two Sets of 48" Doors



PRODUCT DATA SHEET

BK RESOURCES

