

## EXHAUST FANS

Variable-Speed for Solid Fuel Venting

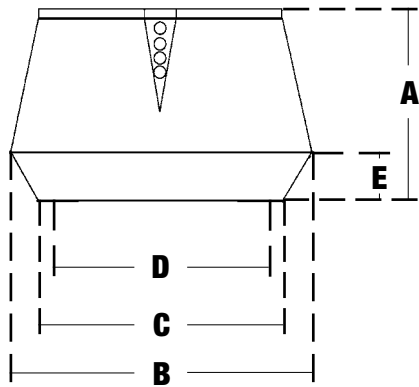
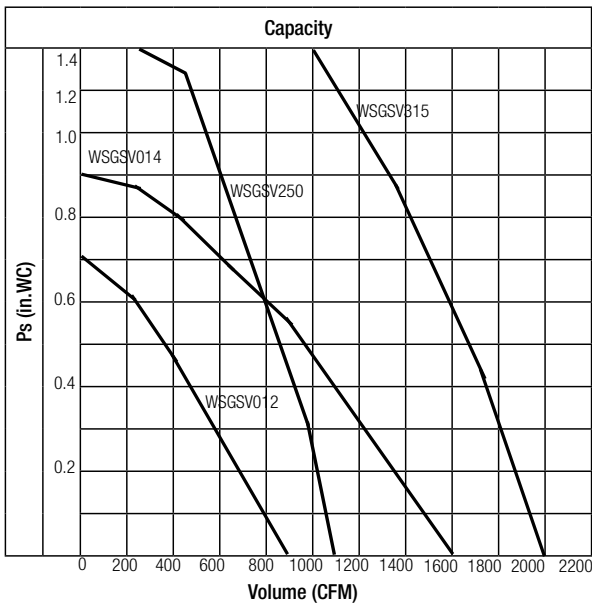


Job Name

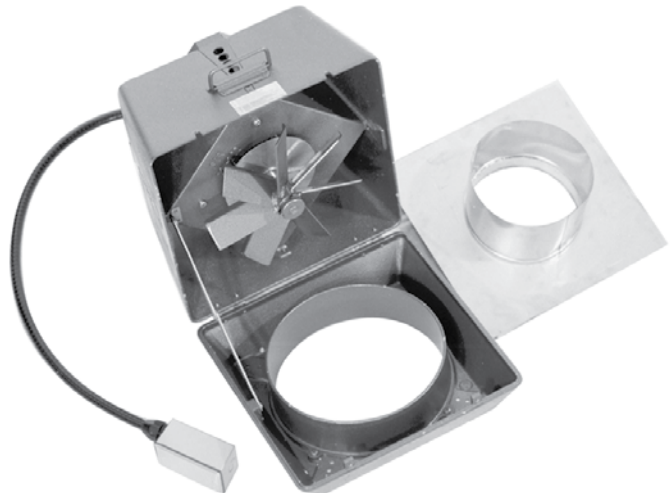
Model

WS-GSV-(012, 014, 250, 315)

Item#



	WSGSV012	WSGSV014	WSGSV250	WSGSV315
A	11.03	13.20	13.20	16.94
B	15.37	19.11	19.11	25.61
C	12.22	15.17	15.17	20.69
D	10.72	13.04	9.85	15.76
E	3.15	3.94	3.94	5.12
Lbs.	46	60	60	92
Amps	1.4	2.9	2.9	5.8
Volts	120	120	120	120



Wood Stone is proud to carry the world's finest line of exhaust fans for solid fuel venting applications. The fans are designed to withstand the high temperatures associated with wood burning. The construction of the fan's axial vanes creates a self-cleaning effect. Whether venting your solid fuel appliance through a hood or through a direct chimney connection, the WS-GSV is the perfect fan for the job.

Made in Denmark by Exhausto, the WS-GSV is rated for continuous operation at 450 degrees F and comes with a flue adaptor for easy mounting on virtually any size stack. No roof curb is necessary for installation of WGSV fans. The fan comes with a rheostat switch which allows the operator to adjust the fan speed as necessary.



**Wood Stone**

An ongoing program of product improvement may require us to change specifications without notice.  
Revised July 2008

**WOOD STONE CORPORATION**  
1801 W. Bakerview Rd.  
Bellingham, WA 98226 USA

Toll Free (800) 988-8103  
Tel (360) 650-1111  
Fax (360) 650-1166

info@woodstone-corp.com or visit [www.woodstone-corp.com](http://www.woodstone-corp.com)