

Blueair by BLUENIX

MODEL BOD-60G

OPEN DISPLAY CASES

Sleek and durable cooling solution for
your food and beverages.



Conforms to NSF/ANSI 7(ETL)



Stainless steel cabinet construction

Stainless steel interior and exterior
(Durable and easy to clean).



Temperature range between 38°F ~ 44°F

Air guard on rear wall ensures proper air
circulation and cooling.

MODEL BOD-60G

OPEN DISPLAY CASES

Cabinet Dimensions (inches/mm)

L	D	H
60 1/8" 1526 mm	32 3/4" 831 mm	80 3/4" 2050 mm

Weight (lbs/kg)

Net Weight	Ship Weight
633 lbs 287 kg	679 lbs 307 kg

Cabinet construction

- Black or white painted steel exterior and white painted steel interior
- High density foamed in place polyurethane insulation - Environmentally safe
- Perforated interior rear wall and top vents for more efficient air circulation cooling
- Standard night curtain
- Four (4) 1" height adjustable shelves

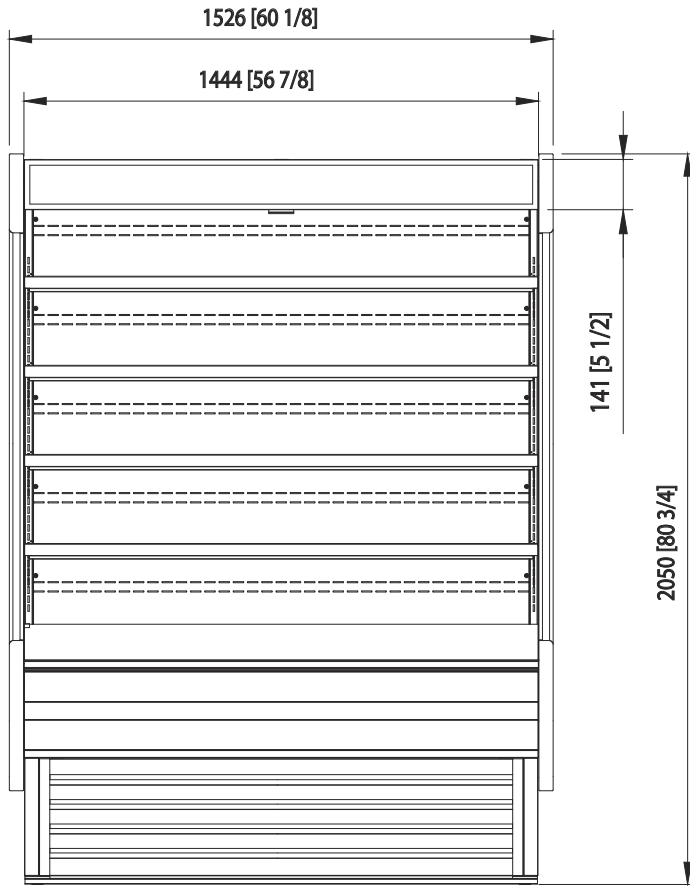
Refrigeration

- R-404A Refrigerant.
- Self-contained system, bottom mounted compressor provides quick and easy maintenance.
- Innovative hot gas frame heating system reduces condensation and increases energy efficiency.
- Front air intake and rear air vent circulation system.

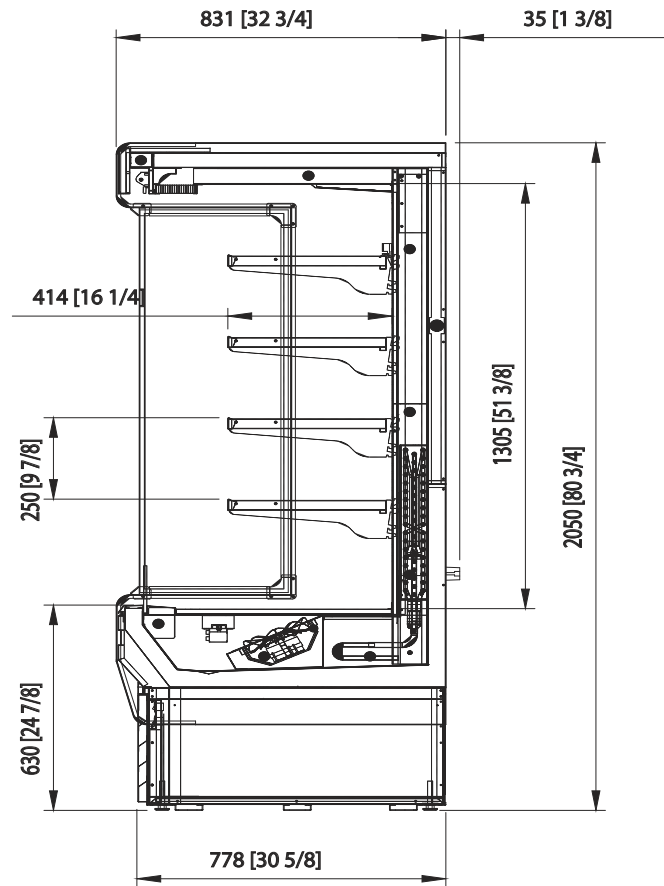
Optional Features & Accessories

- Glass side panel

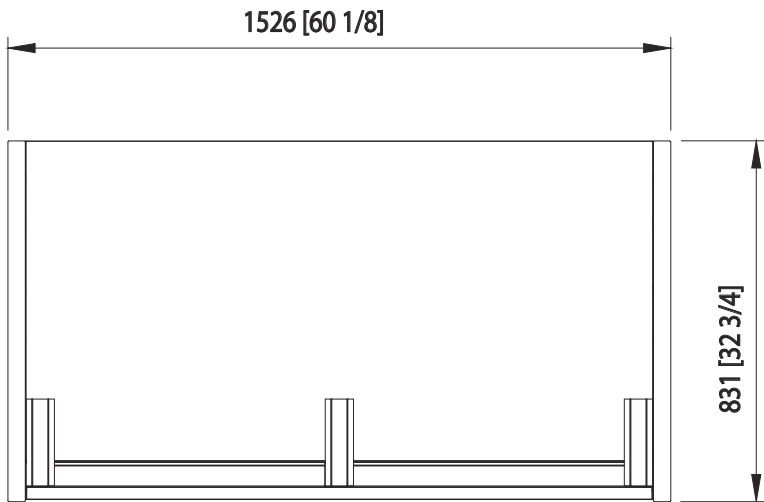
Front view



Side view



Top view



Capacity Cu.Ft.	33.9
Shelves	4
Refrigerant	R-404 A
Temperature Range	38°F ~ 44°F
Easy Maintenance	Sliding Condensing Unit
Connection	9.8 ft long (3m) flexible three wire cord with modeled plug
Lighting	LED Interior lighting
HP	1
Voltage	115V/60Hz
Amps	16.5
NEMA Config.	NEMA 5-20



- This product may expose you to chemicals including Diisononyl Phthalate(DINP), which is known to the State of California to cause cancer. For more information go to www.P65Warnings.ca.gov.
 - Ce produit peut vous exposer à des agents chimiques incluant le Diisononyl Phthalate(DINP), reconnu par l'Etat de Californie comme causant le cancer. Pour de plus amples renseignements, consulter le site www.P65Warnings.ca.gov.

Blueair by
BLUENIX

Blue Air has right to change specifications without further notice.



blueairfse.com



orders@blueairfse.com



1-886-677-8500



223 W. Rosecrans Ave., CA 90248
 T: 310-808-0102

9 W. Shelton Terrace #A, Hillside, NJ 07205
 T: 908-688-0970