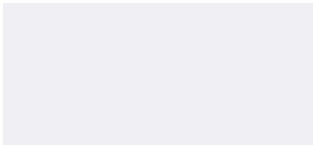




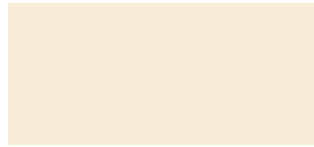
# COLOR FINISHES

## AeroHot®, AeroServ™, & Thurmaduke™ Standard Powder Coat Paint Colors

You must specify your choice of available colors when ordering.



#217105 - Bright White



#217103 - Natural Almond



#217150 - Orange



#217154 - Racing Red



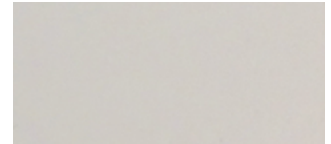
#217107 - Hollyberry Red



#217120 - Sky Blue



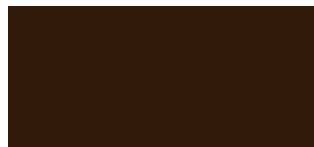
#217127 - Fence Green



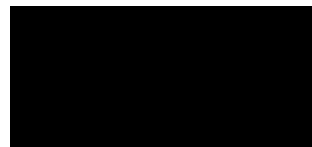
#217152 - Stone Gray



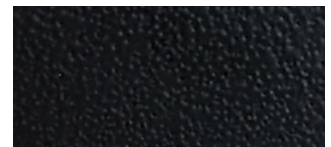
#217102 - Silver Hammer



#217113 - Brown Kickplate



#217101 - Semi-Gloss Black



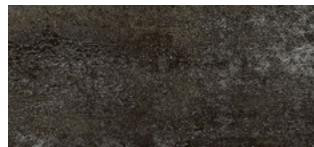
#217125 - Textured Black

## AeroServ™ & Thurmaduke™ Laminate Selections

You must specify your choice of available finishes for counter bodies and optional food guards and trayslides when ordering by adding the appropriate finish/color suffix number to the product model number.



Lapis Blue -  
*WilsonArt D417-60*



Forged Steel -  
*WilsonArt 4995-60*



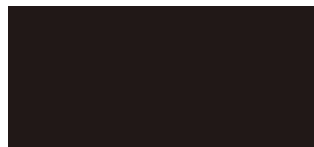
Oxide -  
*WilsonArt 1787-60*



Windswept Pewter -  
*WilsonArt 4795-60*



Hollyberry -  
*WilsonArt D307-60*



Black -  
*WilsonArt 1595-60*

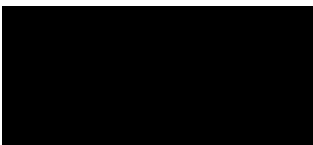


Amber Maple -  
*Formica 7015-58*



Acajou Mahogany -  
*Formica 7008-58*

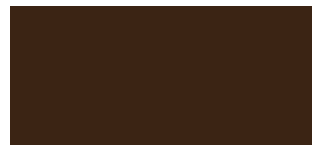
## Food Shield Colors



HB-10 Black Matte



HB-20 Copper



HB-30 Brown

## Actual Colors May Vary

The colors above were matched to the actual product colors and finishes in bright daylight. Discrepancies between paper and metal may cause slight variances. Duke will do everything in our power to assure consistency and accuracy. For actual finish samples, please contact Duke's St. Louis office by calling 1-800-735-3853.