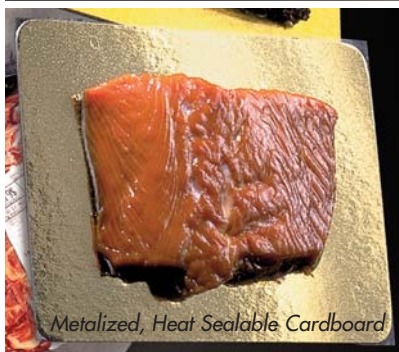


INTACT® VS571
VACUUM SKIN PACKAGING MACHINE

Rigid, Barrier Tray with Barrier Film

Metalized, Heat Sealable Cardboard

Fresh or Freezer Film Available

The packaging flexibility and high end look you desire at a fraction of the cost of rollstock

- Film to tray • Film to gold board • Film to film


Contact us at:

UltraSource LLC
1414 West 29th Street
Kansas City, MO 64108-3604 USA

800-777-5624

P: 816-753-2150

F: 816-753-4976

info@UltraSourceUSA.com

UltraSourceUSA.com



UltraSource®

© Copyright 2019 UltraSource LLC

"Retail ready" packages

The Intact® process is a unique method for creating a "retail ready" vacuum skin package and offers greater versatility in package type, size, and style because of its ability to run with film to tray, film to board, and film to film configurations. The benefits of using an Intact machine are amazing – a high gloss, wrinkle free vacuum skin package at a fraction of the cost of most VSP rollstock packaging machines.

Intact semi automatic packaging machines are ideal for packaging a wide range of fresh or frozen meat, poultry, and seafood products such as rib eye steaks, loin pork chops, T-bones, fish, sushi, oysters, lobster tail, salmon, or shrimp.

INTACT® VS571
VACUUM SKIN PACKAGING MACHINE
Intact® vacuum skin packaging reduces labor costs

Designed for continuous, efficient operation, our Intact VS571 machine results in reduced labor costs through the remote loading of product utilizing a magazine system that ensures total flexibility of product and reduced downtime.

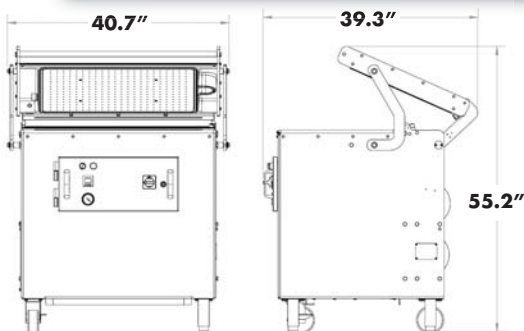
VS571 Features

- Stainless steel construction
- 5-hp vacuum pump
- Manual control
- Works with film to film, film to gold board, or film to tray



Hinged door for easy access to electrical components

NEW DESIGN
Simplified for easier maintenance



Specifications	VS571
Machine dimensions	40.7" W x 39.3" D x 55.2" H (1,034mm x 1,000mm x 1,403mm)
Chamber size	27.5" W x 19.6" D x 3.9" H (700mm x 500mm x 100mm)
Cycle speed	20-40 seconds per cycle
Net weight	418 lbs. (190 kg)
Electrical	230V, 3-phase, 26 amps, 50/60Hz 380-415V, 3-phase, 14 amps, 50/60Hz

© Copyright 2013 UltraSource LLC



ETL Listed, conforms to:
UL-963, CSA-C22.2 No. 68-09, NSF-2



UltraSource®