



DUKERS

Quality Commercial Refrigeration



BACK BAR BEVERAGE COOLER

MODEL DBB48-M2

Solid Door



PRODUCT FEATURES

- Digital controller and temperature display. To save energy and reduce heat production, the unit has fans with electronically commutated motors that circulate cold air.
- Temperatures in the cabinet range from 33 to 38 degrees Fahrenheit
- Each of the doors has an exterior made from laminated black vinyl, which matches the rest of the cabinet's exterior. The front and sides of the unit are covered in a wear-resistant laminated black vinyl that complements the stainless steel countertop bar area.
- Heavy-duty casters with brakes are included providing the unit with convenient mobility, making cleaning and servicing a breeze! Just roll the unit away from the wall.
- Heavy-duty gaskets on the doors prevent cold air from leaking out, while polyurethane insulation keeps warm air from seeping in.
- To accommodate various products has six black PVC-coated wire shelves that are adjustable in 1/2-inch increments.



TECHNICAL SPECIFICATIONS

Voltage/Frequency	115V/60Hz
Refrigerant	R290
Type of Defrost	Automatic
Interior Material	Stainless Steel
Exterior Material	Stainless Steel
Temperature Range °F	33 ~ 38°F
Compressor Power (HP)	1/5
Nema Config.	NEMA5-15P



HIGH QUALITY STAINLESS STEEL & ROBUST DESIGN



DUKERS

Los Angeles | San Francisco | Dallas
Houston | Florida | Chicago | New Jersey

1-800-931-8628

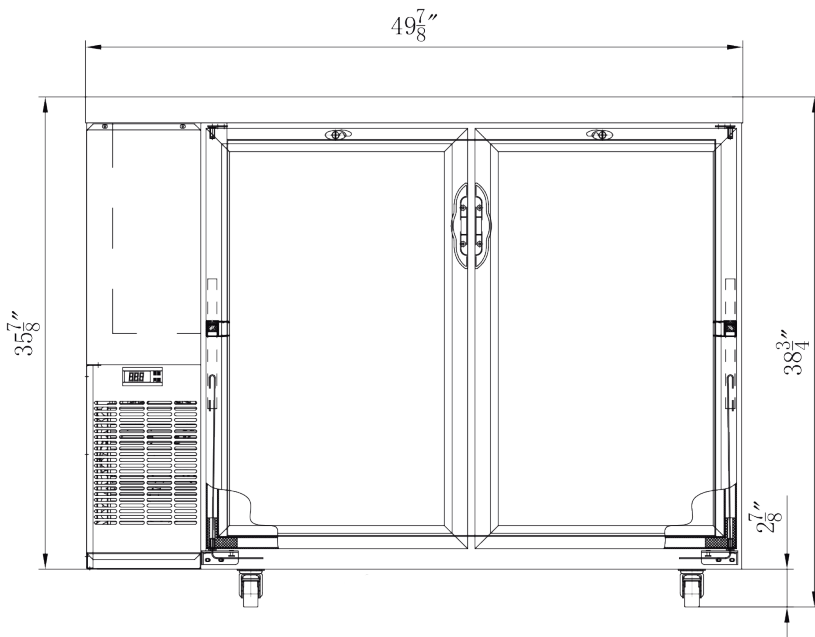
@ info@dukersusa.com

www.DukersUSA.com

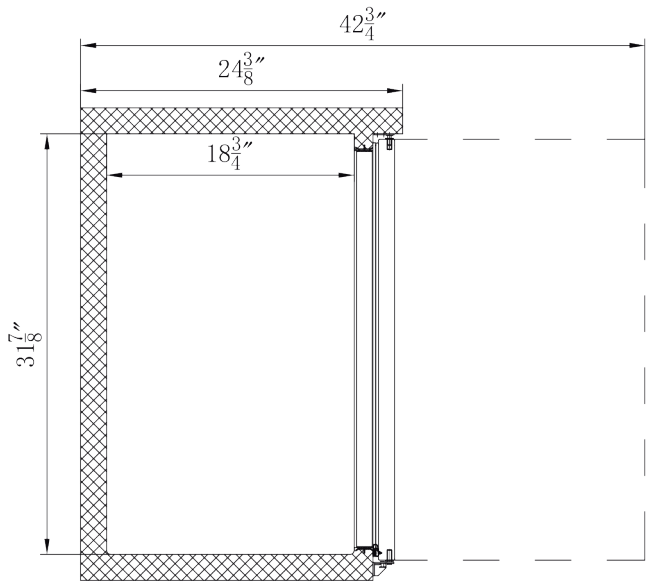
DETAILS & SPECIFICATIONS

BACK BAR BEVERAGE COOLER

Front View



Side View



MODEL	EXTERNAL DIMENSION WXDXH (INCHES)	PACKAGING DIMENSION WXDXH (INCHES)	PRODUCT NET WEIGHT	# OF SHELVES	40FT (PCS)
DBB48-M2	49 7/8"x24 3/8"x38 3/4"	51 5/8"x26 3/8"x43 1/4"	240 lbs	4	54

* All measures are presented in inches and pounds



115/60/1
NEMA-5-15P



Los Angeles | San Francisco | Dallas
Houston | Florida | Chicago | New Jersey

1-800-931-8628

@ info@dukersusa.com

www.DukersUSA.com