

# VICTORY<sup>®</sup> ULTRASPEC

PROJECT: \_\_\_\_\_

ITEM # \_\_\_\_\_ QTY: \_\_\_\_\_

MODEL # \_\_\_\_\_

AIA # \_\_\_\_\_ SIS # \_\_\_\_\_

## ROLL-THRU EXTRA TALL REFRIGERATOR

### RISA-1D-S1-PT-XH-HC



#### EXCLUSIVE WARRANTY

- ▶ 6 Year Parts & Labor Warranty
- ▶ 7 Year Compressor Warranty
- ▶ Exclusive 2 Year Warranty On Magnetic Door Gaskets
- ▶ Lifetime Warranty On Handles & Hinges (parts only)



#### CABINET CONSTRUCTION

- Stainless Steel Exterior
- Aluminum Interior
- Heavy-Duty Cam Hinges
- Stay-Open Door Feature For Easy Product Loading
- Heavy-Duty 20 Gauge Stainless Steel Door
- Heavy-Duty Cylinder Locks
- Stainless Steel Interior Door Liner
- Adjustable Door Wiper Gasket
- One-Piece, Snap-In Magnetic Door Gasket
- Low Profile Vertical Door Handles
- Hinged Front Shroud
- Energy Saving Thermal Breaker With Stainless Steel Breaker Caps
- Accepts Cart: 26 1/2"W x 25 1/2"D x 71 1/2"H (cart not included)
- 8' Cord And Plug (see electrical data for details)

#### FEATURES

- Full Electronic Control With Touchpoint Interface
- Expansion Valve Technology
- One Touch Defrost
- Manager's Lockout Feature
- High Performance, Balanced, Top-Mounted Refrigeration
- Anti-Condensate Perimeter Heater

#### REFRIGERATION

- Refrigeration System Uses R-290 Refrigerant To Comply With All Environmental Concerns
- Hot Gas Condensate Evaporator
- Adaptive Defrost For Reduced Energy Consumption And More Consistent Product Temperatures
- Epoxy Coated Evaporator Coil, Located Out Of The Food Zone
- Refrigerator Capable Of Maintaining Product Temperature 36°F To 38°F

ROLL-THRU EXTRA TALL REFRIGERATOR



Please Verify Qualifying Units By Visiting:  
[www.energystar.gov/cfs](http://www.energystar.gov/cfs)

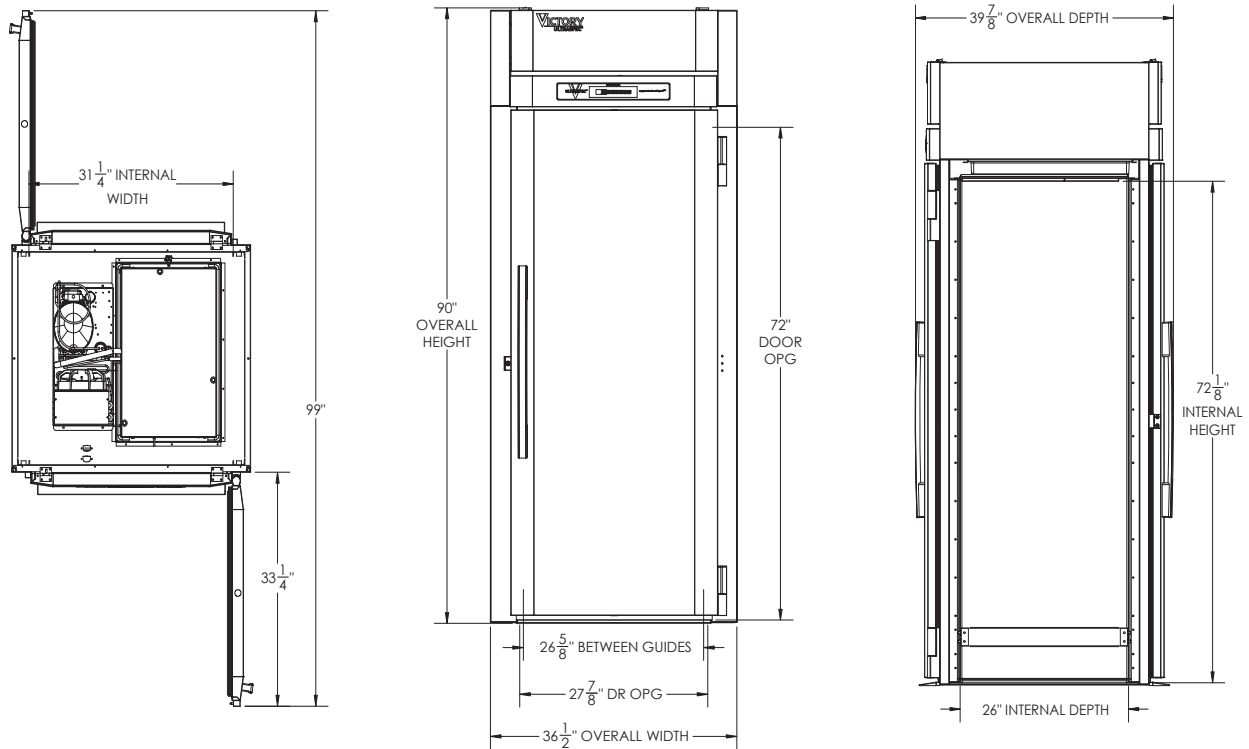
#### OPTIONS & ACCESSORIES

- Secure-Temp™ Technology
- Exterior Laminate
- Correctional Facilities Option
- Stainless Steel Back
- FlexTemp Maintain Between 28°F And 38°F
- Stainless Steel Exterior Floor (base)
- Door Swing Orientation (at time of order)

3779 Champion Blvd, Winston-Salem, NC 27105  
 ph: (888) 845-9800 | fax: (800) 253-5168  
 Sales@VictoryRefrigeration.com | VictoryRefrigeration.com

Rev. 9/1/23 Printed in U.S.A.

APPROVAL: \_\_\_\_\_ DATE: \_\_\_\_\_



We reserve the right to change specifications and product design without notice. Such revisions do not entitle the buyer to corresponding changes, improvements, additions or replacements for previously purchased equipment. Dimensional tolerances +/- 1/4". Metric dimensions (MM)

Required Clearance: Top 12", Rear 3", Sides 0"

CHARACTERISTICS		ELECTRICAL DATA		SHIPPING DETAILS	
Net Capacity (cubic ft.)	42.27	Cabinet Voltage*	115/60/1	Height	95"
Width, Overall (in.)	36 1/2"	Total Amperes	8.5	Width	45"
Depth, Overall (with handle)	39 7/8"	NEMA Plug (8" cord)	5-15P	Depth	45"
Height Overall (in.)	90"	<b>REFRIGERATION DATA</b>		Crated Weight	450 lbs
Depth, Door Open 90°	99"	Condensing Unit Size, HP	3/4		
Door Opening (in.)	27 7/8" x 72"	Refrigerant	R-290		
No. Of Doors	2	Capacity (BTU/HR) (100°F/20°F)	4950		
		Heat Rejection (BTU/HR)	7425		
		Charge (lbs/grams)	0.2866/130		

\* NOTE: This unit utilizes variable speed compressor technology. The compressor can experience nuisance tripping on Class A GFCI outlets which have a trip limit of 4 mA to 6 mA. To avoid this issue in a location that requires GFCI circuit protection, Victory recommends using a HUBBELL Model Number GFRST83W 20A Heavy Duty Hospital Grade Self-Test GFCI Receptacle.

3779 Champion Blvd, Winston-Salem, NC 27105 | ph: (888) 845-9800 | fax: (800) 253-5168

Sales@VictoryRefrigeration.com | VictoryRefrigeration.com

Rev. 9/1/23 Printed in U.S.A.

an Ali Group Company



The Spirit of Excellence