

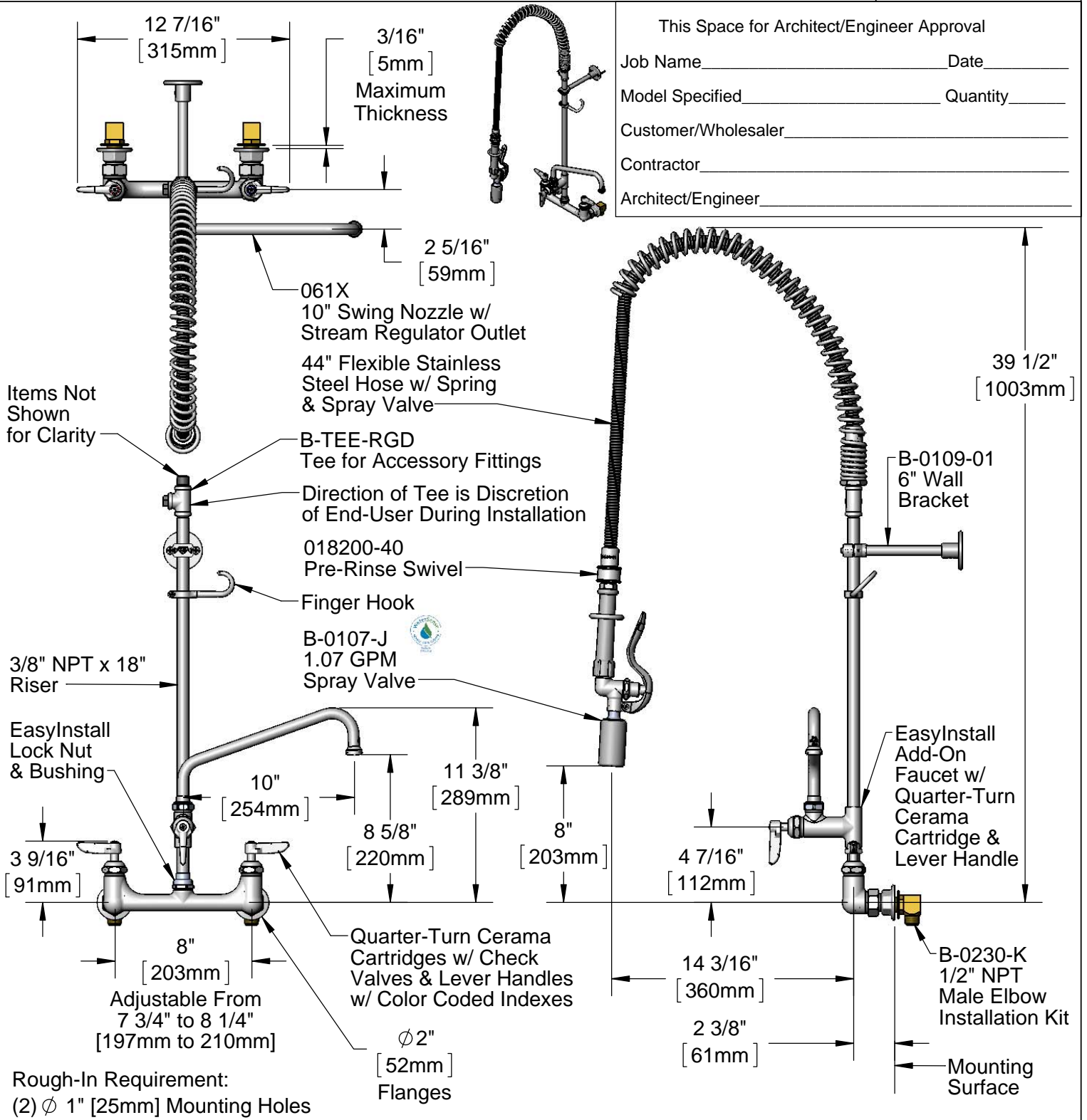


**T&S BRASS AND BRONZE WORKS, INC.**  
 2 Saddleback Cove / P.O. Box 1088  
 Travelers Rest, SC 29690

Model No.  
**B-0133-10CRBJST**

Item No.

Travelers Rest, SC: 800-476-4103 • Simi Valley, CA: 800-423-0150 • Fax: 864-834-3518 • www.tsbrass.com



Product Specifications:  
 Pre-Rinse Unit: EasyInstall 8" Wall Mount Mixing Faucet, Quarter-Turn Cerama Cartridges w/ Check Valves, Lever Handles, Add-On Faucet w/ 10" Swing Nozzle, 44" Flexible Stainless Steel Hose, 1.07 GPM Spray Valve w/ Swivel, 6" Wall Bracket, Accessory Fitting Tee & 1/2" NPT Male Elbow Installation Kit

Product Compliance:  
 ASME A112.18.1 / CSA B125.1  
 NSF 61 - Section 9  
 NSF 372 (Low Lead Content)  
 EPA Act 2005 (PRSV)  
 EPA WaterSense (PRSV)



# T&S BRASS AND BRONZE WORKS, INC.

2 Saddleback Cove / P.O. Box 1088  
Travelers Rest, SC 29690

Model No.  
**B-0133-10CRBJST**

Item No.

Travelers Rest, SC: 800-476-4103 • Simi Valley, CA: 800-423-0150 • Fax: 864-834-3518 • www.tsbrass.com

	ITEM NO.	SALES NO.	DESCRIPTION
	1	B-0107-J	1.07 GPM Spray Valve
	2	010476-45	#27 Washer
	3	000907-45	Spray Valve Hold Down Ring
	4	002987-40	Grip Handle
	5	001014-45	Washer, B-0100 Hose Barrel
	6	018200-40	Pre-Rinse Swivel
	7	B-0044-H2A	44" Flexible Stainless Steel Hose, Less Handle
	8	002369-25	3/8" NPT Plug
	9	000888-45	EasyInstall Overhead Spring
	10	000821-40	Spring Body
	11	002535-25	3/8" Close Nipple
	12	001614-40	3/8" NPT Tee
	13	B-TEE-RGD	Rigid Tee
	14	B-0109-01	6" Wall Bracket
	15	004R	Finger Hook
	16	000369-40	3/8" NPT x 18" Riser
	17	EZ-K	EasyInstall Kit: Nut, Bushing, O-Ring & Lock Washer
	18	001065-45	O-Ring
	19	014200-45	Star Washer, Anti-Rotation
	20	012447-25	Quarter-Turn Cerama Cartridge, LTC w/ Check Valve, Handle, Index & Screw
	21	001660-45	Blue Index-CW
	22	012395-25	Quarter-Turn Cerama Cartridge, LTC w/ Check Valve
	23	002954-45	Shank Lock Nut
	24	B-0230-K	Short Elbow Installation Kit
	25	000999-45	Brass Lock Washer
	26	001019-45	Coupling Nut Washer
	27	00AA	1/2" NPT Female Eccentric Flange
	28	012394-25	Quarter-Turn Cerama Cartridge, RTC w/ Check Valve
	29	012446-25	Quarter-Turn Cerama Cartridge, RTC w/ Check Valve, Handle, Index & Screw
	30	001638-45	Lever Handle
	31	001661-45	Red Index-HW
	32	000922-45	Lever Handle Screw
	33	B-0155-CR-LN	Add-On Faucet, Less Nozzle
	34	011278-25	Quarter-Turn Cerama Cartridge, RTC
	35	B-PT	Stream Regulator Outlet
	36	001048-45	Nozzle Tip Washer
	37	061X	10" Swing Nozzle

**Product Specifications:**  
Pre-Rinse Unit: EasyInstall 8" Wall Mount Mixing Faucet, Quarter-Turn Cerama Cartridges w/ Check Valves, Lever Handles, Add-On Faucet w/ 10" Swing Nozzle, 44" Flexible Stainless Steel Hose, 1.07 GPM Spray Valve w/ Swivel, 6" Wall Bracket, Accessory Fitting Tee & 1/2" NPT Male Elbow Installation Kit

**Product Compliance:**  
ASME A112.18.1 / CSA B125.1  
NSF 61 - Section 9  
NSF 372 (Low Lead Content)  
EPA Act 2005 (PRSV)  
EPA WaterSense (PRSV)