



# BEVERAGE-AIR

|                 |      |
|-----------------|------|
| Project: _____  | AIA# |
| Item: _____     |      |
| Location: _____ | SIS# |
| Approved: _____ |      |

**DW49HC DEEP WELL SERIES: HORIZONTAL BOTTLE COOLERS**

## HORIZONTAL BOTTLE COOLERS

DW49HC Deep Well Series  
Hydrocarbon Series

**MODEL:  
DW49HC-B**



**3 Year Parts/Labor Warranty**  
**Additional 4 Year Compressor Warranty**

### CABINET CONSTRUCTION

- Exterior features durable black painted steel
- Galvanized steel interior and floor
- Full electronic control
- Tops include easy glide, stainless steel lids (2)
- Stainless steel countertop with integral glass stops
- Three (3) epoxy coated adjustable wire dividers
- Bottle opener and cap catcher standard
- Constructed with high cooling RPM fans to provide fast cooling

### OPTIONS & ACCESSORIES

- Stainless steel interior
- Wire divider
- Lid locks
- 3" Casters or 6" adjustable leg with plate
- Remote option\* (see note on back on page)

### REFRIGERATION SYSTEM

- Refrigeration system uses R290 refrigerant to comply with all environmental concerns
- Automatic, non-electric defrost
- Epoxy coated evaporator coil
- Forced air refrigeration system holds product between 36°- 40°F



Please verify qualifying units by visiting:  
[www.energystar.gov/cfs](http://www.energystar.gov/cfs)

3779 Champion Blvd., Winston-Salem, NC 27105  
1-888-845-9800 Fax: 1-336-245-6453  
Beverage-Air.com Sales@bevair.com



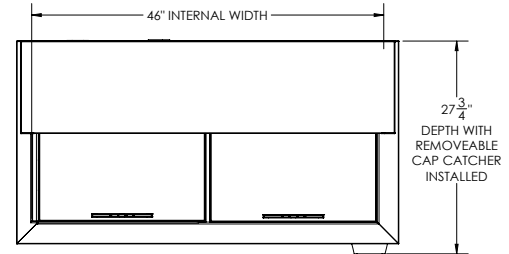
# BEVERAGE-AIR

| MODEL                                | DW49HC-B   |
|--------------------------------------|------------|
| <b>EXTERNAL DIMENSIONAL DATA</b>     |            |
| Width Overall                        | 50"        |
| Depth Overall                        | 26 ½"      |
| Depth Overall with Cap Catcher       | 27 ¾"      |
| Height Overall                       | 33 ¾"      |
| Number of Lids                       | 2          |
| <b>INTERNAL DIMENSIONAL DATA</b>     |            |
| NET Capacity (cubic ft.)             | 13.7       |
| Internal Width Overall (in)          | 46"        |
| Internal Depth Overall (in)          | 22 ¾"      |
| Internal Height Overall at Step (in) | 15 ½"      |
| Internal Height Overall (in)         | 26 ¾"      |
| Number of Dividers                   | 3          |
| 12 oz. Bottle Capacity               | 17 ½ Cases |
| 12 oz. Can Capacity                  | 23 ¾ Cases |
| <b>ELECTRICAL DATA</b>               |            |
| Full Load Amperes                    | 2.5        |
| <b>REFRIGERATION DATA</b>            |            |
| Horsepower                           | 1/4        |
| Capacity (BTU/Hr)                    | 1702       |
| Heat Rejection (BTU/Hr)              | 2553       |
| Charge (lbs/grams)                   | 0.2314/105 |
| <b>SHIPPING DATA</b>                 |            |
| Gross Weight - Crated                | 274 lbs    |
| Height - Crated                      | 41"        |
| Width - Crated                       | 52"        |
| Depth - Crated                       | 30"        |

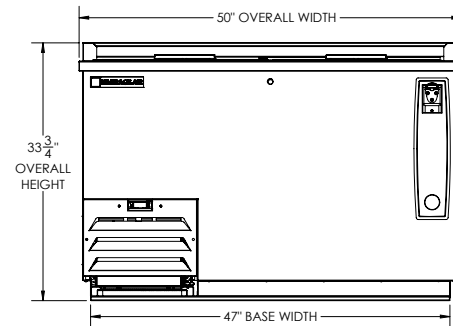
\*NOTE: Remote units are field wired and come with 6" legs.  
Refrigerant must be specified at time of order.

## Horizontal Bottle Coolers - Deep Well Model: DW49HC-B

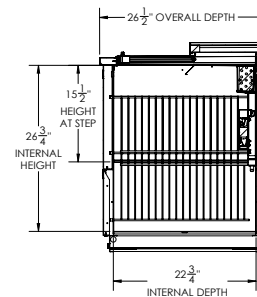
### Model Views



### PLAN VIEW



### ELEVATION VIEW



### SIDE VIEW

### ELECTRICAL CONNECTION



115/60/1  
NEMA 5-15P

Unit pre-wired at factory and include 8' long cord and plug set.



3779 Champion Blvd., Winston-Salem, NC 27105 1-888-845-9800 Fax: 1-336-245-6453 Beverage-Air.com Sales@bevair.com

an Ali Group Company



The Spirit of Excellence