

# Oasis

39"H Refrigerated Self-Service Produce Case

Structural Concepts®

DELIVERING FRESH. ALWAYS.™

- **P43941R** 50-3/4"L x 41-7/8"D x 39-3/8"H
- **P63941R** 75-1/8"L x 41-7/8"D x 39-3/8"H
- **P83941R** 99-1/2"L x 41-7/8"D x 39-3/8"H

## Included

- Black rear exterior
- Compressor air rear intake, front discharge. Toe kick cannot be blocked
- Digital fahrenheit thermometer
- Integrated average product temperature of 40°F or less
- One year parts & labor; 5 year compressor warranty
- Open reach-in front

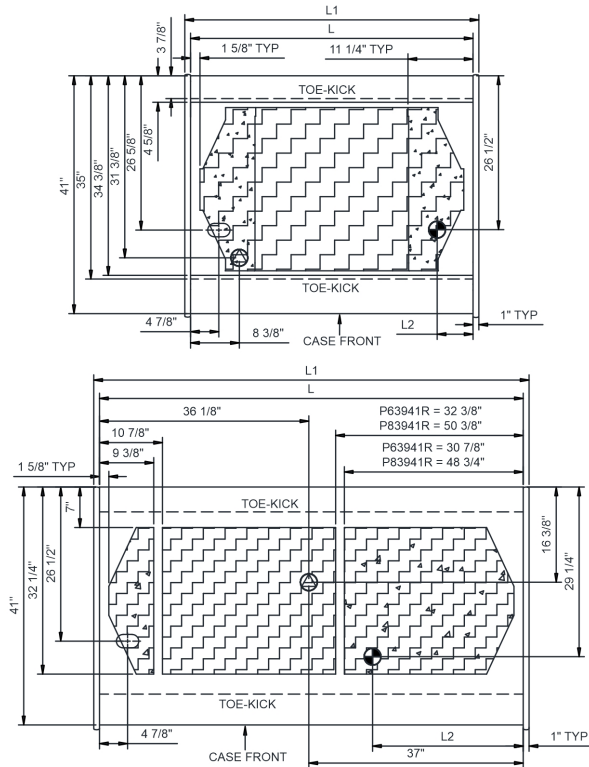


P43941R

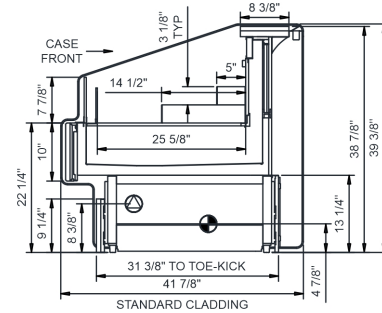
| Specify                      | Standard Features                           | Additional Options   |
|------------------------------|---|--|
| <b>EXTERIOR COLOR</b>        | • Laminate (stock colors)                   | • Laminate (non-stock colors)<br>• Powder coated (stock colors, specify RAL#)<br>• Stainless steel |
| <b>INTERIOR COLOR</b>        |   | • Stainless steel  |
| <b>BASE</b>                  | • Casters w/ levelers (self-cont.)          | • Rail system for shims (remote)   |
| <b>BUMPER END</b>            | • None                                      | • Bumper on end (matches front bumper) (1 row)   |
| <b>BUMPER FRONT</b>          | • None                                      | • 1" Boston bumper (specify color)   |
| <b>END PANELS</b>            | • Full w/stainless steel mirror interior    | • None (synchronized defrost required)   |
| <b>RISERS</b>                | • None                                      | • 3"H Full depth display risers  |
| <b>ELECTRICAL CONNECTION</b> | • 6' Straight blade power cord (self-cont.) | • Electrical leads (remote)  |
| <b>REFRIGERATION</b>         | • Breeze self-contained refrigeration       | • Note: Remote doesn't incl Conds unit. Floor drain reqd.<br>• Remote DX ref w/ standard coil      |
| <b>SENSOR</b>                | • None                                      | • CPC discharge air sensor (remote)  |
| <b>MISCELLANEOUS</b>         |   | • Second year parts & labor warranty (excludes compressor)   |

|  |   |                                  |
|--|---|----------------------------------|
| <b>Intended Environment:</b> Type I - Designed to operate in ambient conditions of 75°F with 55% relative humidity unless noted otherwise in system information below. |   |                                  |
| <b>Zone</b>  | <b>Intended Product To Be Displayed</b> | <b>Warmest Avg Prod Temp ° F</b> |
| 1  | Packaged refrigerated products          | 40                               |

**PLAN VIEW**



**SIDE VIEW**



**NOTE: ALL DIMENSIONS APPROXIMATE**

- ELECTRICAL JUNCTION BOX**  
(SUPPLIED WITH 6" LEADS OR POWER CORD).
- LOCATION OF DRAIN TUBE FOR REMOTE REF.**  
ONLY (SUPPLIED WITH 3/4" OR 1 1/2" PVC TUBE).

- REFRIGERATION LINE CONNECTION.**
- REMOTE FLOOR SINK & UTILITIES**  
ACCESS AREA.

- SELF-CONTAINED CASE SERVICE ACCESS AREA.**
- DRY CASE SERVICE ACCESS AREA.**

| Model Technical Specifications |       |       |       |                        |                        |         |      |          |       |       |           |                 |                 |                 |        |     |
|--------------------------------|-------|-------|-------|------------------------|------------------------|---------|------|----------|-------|-------|-----------|-----------------|-----------------|-----------------|--------|-----|
| Model                          | L"    | L1"   | L2"   | System Circuit Volts   |                        | Phs     | Freq | Amps *** | Watts | Wires | NEMA Plug | SST             | Conv. Rack BTUH | Para. Rack BTUH | Est Wt |     |
|                                |       |       |       | Remote (DX)            | Self-Contained (R513A) |         |      |          |       |       |           |                 |                 |                 |        |     |
| P43941R                        | 48.75 | 50.75 | 6.25  | Remote (DX)            | Circuit #1             | 110-120 | 1    | 60       | 0.49  | 43    | 2+G       | Leads Multiple  | 20.00           | 1949            | 1805   | N/A |
|                                |       |       |       | Self-Contained (R513A) | Circuit #1             | 110-120 | 1    | 60       | 8.86  | 743   | 2+G       | 5-15P or L5-15P | N/A             | N/A             | N/A    | N/A |
| P63941R                        | 73.13 | 75.13 | 26.00 | Remote (DX)            | Circuit #1             | 110-120 | 1    | 60       | 0.91  | 77    | 2+G       | Leads Multiple  | 20.00           | 2873            | 2660   | N/A |
|                                |       |       |       | Remote (GLYCOL 35%)    | Circuit #1             | 110-120 | 1    | 60       | 0.86  | 60    | 2+G       | Leads Multiple  | 20.00           | 2873            | 2660   | N/A |
|                                |       |       |       | Self-Contained (R513A) | Circuit #1             | 110-120 | 1    | 60       | 16.00 | 1,205 | 2+G       | 5-20P           | N/A             | N/A             | N/A    | N/A |
| P83941R                        | 97.50 | 99.50 | 4.63  | Remote (DX)            | Circuit #1             | 110-120 | 1    | 60       | 0.98  | 86    | 2+G       | Leads Multiple  | 20.00           | 3847            | 3562   | N/A |
|                                |       |       |       | Self-Contained (R513A) | Circuit #1             | 110-120 | 1    | 60       | 15.52 | 1,215 | 2+G       | 5-20P           | N/A             | N/A             | N/A    | N/A |

\*\*\* Does not include electric defrost on freezer models.

**Regulatory Approvals:**

All Models  
 Accordance with AHRI Std 1200  
 ETL Listed to UL 471  
 ETL Listed to CAN/CSA 22.2 No. 120  
 ETL Sanitation to NSF/ANSI 7



In Accordance with  
**AHRI Std 1200**

**DOE 2017**  
 Energy Efficiency  
 Compliant

**Important Notes:**

- 1) ELECTRICAL NOTE: If GFCI is required, a GFCI breaker MUST be used in lieu of a GFCI receptacle.
- 2) 44" Minimum door entry clearance required (Without shipping skid).
- 3) Remote units must be shimmed during installation to ensure the unit is level and plumb.

**⚠ WARNING:** This product can expose you to chemicals, including Urethane (Ethyl Carbamate), which are known to the State of California to cause cancer and birth defects or other reproductive harm. For more information go to [www.P65Warnings.ca.gov](http://www.P65Warnings.ca.gov).